



HOME DEKOR

fashion furniture



MUNNA COLLECTION

www.home-dekor.com

HERITAGE OF CRAFTSMANSHIP

Established in Porto in 2008, Munna is a furniture design brand renowned for creating handmade upholstery with unmatched craftsmanship, seamlessly blending noble materials and timeless design, for both commercial and residential projects.

Made by hand in Porto, Munna's pieces honour the profound heritage of craftsmanship, while drawing inspiration from history's most influential artistic periods, using high quality fabrics such as cotton velvet, twill, leather and silk; the finest wood veneers, such as ebony, walnut and rosewood; sumptuous gold, silver and copper leaves, metal details in brass, nickel and copper, and superior lacquers.

Munna's designers and craftsmen are committed to delivering only highest standard upholstery, creating armchairs, sofas, stools and folding screens that never lose their power of amazement.

The brand's philosophy is to create meaningful design with lasting appeal, matched by signature exquisite finery. Munna has become an international reference in the creation of timeless design that infuse a higher form of living.

The new classics, by MUNNA.

ARMCHAIRS



LIPSTICK P.10



CAPRICE P.12



BABE P.14



FEMINA P.16



BECOMES P.18



MELODY P.20



MELODY SWIVEL P.20



AILEEN P.22



MONSIEUR T P.24



POLAIRE P.26



NEWMAN P.28



SOPHIA P.30



CORSET P.32



CHANTAL P.34



BLONDIE P.36



PRIVATE P.38



HOUSTON P.40



LOUISE P.42



JOSEPHINE P.44



FRINGES P.46



CANDY P.48



CLEO P.50



HERITAGE P.52



SOFT & CREAMY P.54



QUEEN B SWIVEL P.56



FRANK P.58



GRAN TORINO P.60



CUTIE P.62



OLYMPIA P.64



MARGARET P.66



LUKE P.68



BE MINE P.70



HERITAGE Limited edition P.72



SOFT & CREAMY Limited edition P.74



CAPRICE Limited edition P.76



BECOMES ME Limited edition P.78

SOFAS



FERDINAND 350 P.82



MAVERICK 280 P.84



FRINGES 280 P.86



ROSIE 280 P.88



JOSEPHINE 280 P.90



MARGOT 280 P.92



GRAN TORINO 280 P.94



KIKI 260 P.96



LOUIS 240 P.98



LUKE 240 P.100



LOUISE 240 P.102



HUGHES 240 P.104



JOSEPHINE 230 P.106



ROSIE 230 P.108



NEWMAN 230 P.110



SOPHIA 210 P.112



MARGARET 210 P.114



FRINGES 2 SEAT P.116



NEWMAN 2 SEAT P.118



SOFT & CREAMY 2 SEAT P.120



HOUSTON 2 SEAT P.122



MONSIEUR T 2 SEAT P.124



BECOMES ME 2 SEAT P.126



CANDY 2 SEAT P.128



PRIVATE 2 SEAT P.130



LIPSTICK 2 SEAT P.132



YES NO MAYBE SO CONVERSATION SOFA P.134



MADELEINE ROUND P.136



EMMA CHAISE LONGUE P.138



OLYMPIA CHAISE LONGUE P.140



YIN YANG P.142

CHAIRS



FRANÇOISE P.146



MARY Q P.148



POLAIRE P.149



MONSIEUR T P.152



CORSET P.154



BECOMES ME P.156



COLEMAN P.158



DAISY P.160



AILEEN P.162



MELODY P.164



LIPSTICK SWIVEL P.166

BAR & COUNTER STOOLS



CHARLOTTE P.170



POLAIRE P.172



BECOMES ME P.174



MELODY P.176



NEWMAN P.178



OLYMPIA P.180



FRINGES P.182

STOOLS & TABLES



IN BETWEEN P.186



IN BETWEEN 140 P.187



CHAMOIS P.188



FRINGES P.189



FRINGES 110 P.189



FRINGES 140 P.190



BELLE DE JOUR P.191



MELLOW 50 P.192



MELLOW 70 P.192



MELLOW 140 BENCH P.193



JEANE P.194



AVA P.195



MISS FEET P.196



MISS FEET P.197

FOLDING SCREENS



EMPIRE P.200



LET'S PLAY P.202



HIDE & SEEK P.204



HIDE & SEEK P.204



GOLDEN EYE P.206

BEDS



JOSEPHINE M P.210



JOSEPHINE L P.212



DAISY M P.214



LET'S PLAY M P.216



LIPSTICK

ARMCHAIR

The Lipstick is an Art Deco inspired piece that brings the femininity of the boudoir to any living space with its sumptuous vertical pleated upholstery, round tapered legs and splayed back legs.

AS PICTURED

Upholstery: Cotton Velvet, ref. Antique Pink, CV28

Legs: Antique pink gloss lacquer

Upholstery nails: Plated nickel

DIMENSIONS

W: 65 cm | 25,6"

D: 73 cm | 28,7"

H: 80 cm | 31,5"

SH: 42 cm | 16,5"

Product options, fabrics and technical details on page 228





CAPRICE

ARMCHAIR

The clean lines and retro silhouette of the Caprice are deceptively simple. Its lush upholstery details and exquisite nails in the back make it an intricate but soothing piece, perfect for lounge seating.

AS PICTURED

Upholstery: Leather, ref. Milk, L01

Legs: White gloss lacquer

Upholstery nails: Plated nickel

DIMENSIONS

W: 70 cm | 27,6"

D: 72 cm | 28,3"

H: 77 cm | 30,3"

SH: 42 cm | 16,5"

Product options, fabrics and technical details
on page 228





BABE

ARMCHAIR

The Babe Armchair holds the graciousness of modern mid-century design, with irresistible contemporary appeal.

The haute couture upholstery and detailed seams, lacquered legs and outline pipping underscore its voluptuous shape. The curvy lines on the Babe make it a must-have element of cool in any living space.

AS PICTURED

Upholstery: Cotton Velvet, ref. Peach, CV20

Legs: Peach gloss lacquer

Feet covers: Polished brass

DIMENSIONS

W: 69 cm | 27,2"

D: 69 cm | 27,2"

H: 74 cm | 29,1"

SH: 44 cm | 17,3"

AH: 58 cm | 22,8"

Product options, fabrics and technical details on page 229





FEMINA

ARMCHAIR

Inspired by the pared back aesthetic of Danish design, the Femina features a silhouette with a refined appeal. The deep seat and padded curved backrest provides an irresistibly comfortable lounging experience.

AS PICTURED

Upholstery: Cotton Velvet, ref. Emerald, CV09

Legs: Cotton Velvet, ref. Emerald, CV09

Feet Covers: Polished brass

DIMENSIONS

W: 70 cm | 27,6"

D: 71 cm | 27,9"

H: 72 cm | 28,3"

SH: 44 cm | 17,3"

AH: 60 cm | 23,6"

Product options, fabrics and technical details on page
on page 229



BECOMES ME

ARMCHAIR

The Becomes Me Armchair is the epitome of serenity inducing design. With an embracing silhouette and luxurious deep seat, its sensuous curves and comfortable back perfectly adapt to the body. The nails adorning the curves and back of the pieces provide a soothing feel to its lines. It is a truly feminine, soft and pleasant design that sets out to be like a second skin. Indeed, it becomes you.

AS PICTURED

Upholstery: Cotton Velvet, ref. Tangerine Tango, CV11

Legs: Tangerine tango gloss lacquer

Upholstery nails: Plated nickel

DIMENSIONS

W: 75 cm | 29,5"

D: 75 cm | 29,5"

H: 82 cm | 32,3"

SH: 43 cm | 16,9"

AH: 49 cm | 19,3"

Product options, fabrics and technical details on page on page 230



Winner of the International Product Design Awards, Seating category, 2012.





MELODY

ARMCHAIR & SWIVEL ARMCHAIR

Like a song that starts with a gentle melody, the front of this armchair is composed as a verse, with a smooth seat and backrest. The scene is set for the explosion of the chorus, bursting from its quilted back, infused with detailed seaming and exuberant curved lines. The Melody Armchair is made to entertain, between song and dance.

ARMCHAIR AS PICTURED

Upholstery: Cotton Velvet, ref. Lilac, CV15
Legs: Upholstered in Cotton Velvet, ref. Lilac, CV15

DIMENSIONS

W: 76 cm | 30"
D: 75 cm | 29,5"
H: 80 cm | 31,5"
SH: 45 cm | 17,7"

SWIVEL ARMCHAIR AS PICTURED

Upholstery: Cotton Velvet, ref. Steel Blue, CV27

DIMENSIONS

W: 70 cm | 27,6"
D: 76 cm | 30"
H: 82 cm | 32,3"
SH: 42 cm | 16,5"

Product options, fabrics and technical details
on page 230 and 231





AILEEN

ARMCHAIR

Aileen revives the style of the ancient Greek Klismos chair, designed to provide the sitter with graceful comfort.

The tapered legs support an elegant seating section, surmounted by a curved buttoned backrest accented by detailed seams.

AS PICTURED

Upholstery: Trevira Velvet, ref.Pale Pink, TRV18.

Legs: Upholstered with Trevira Velvet, ref.Pale Pink, TRV18.

DIMENSIONS

W: 82 cm | 32,3"

D: 78 cm | 30,7"

H: 79 cm | 31,1"

SH: 46 cm | 18,1"

AH: 79 cm | 31,1"

Product options, fabrics and technical details on page on page 231





MONSIEUR T ARMCHAIR & OTTOMAN

The Monsieur T Armchair is a bold, commanding design that offers a brilliant balance between contemporary and more traditional styles. The outstanding accuracy in the diamond tufting and piping techniques, make this design a beautiful masterpiece for an ultimate lounging experience.

AS PICTURED

Upholstery: Leather, ref. Black, L06

Legs: Black gloss lacquer

Upholstery nails: Plated nickel

DIMENSIONS

W: 78 cm | 30,7"

D: 78 cm | 30,7"

H: 80 cm | 31,5"

SH: 43 cm | 16,9"

AH: 45 cm | 17,7"



MONSIEUR T | OTTOMAN

AS PICTURED

Upholstery: Leather, ref. Black, L06

Legs: Gloss black lacquer

Upholstery nails: Plated nickel

DIMENSIONS

W: 65 cm | 25,6"

D: 52 cm | 20,5"

H: 46 cm | 18,1"

Product options, fabrics and technical details on page 232





POLAIRE

ARMCHAIR

Drawing from the impossibly elegant waistlines of the pin ups, the Polaire Armchair is a sensuous piece that offers a generous seat without compromising a gracefulness that defines Munna's signature design. The seaming details are exquisitely crafted, like a silhouette adorning corset.

AS PICTURED

Upholstery: Trevira Velvet, ref. Lime, TRV12

Legs: Ebony wood veneer, gloss varnish

DIMENSIONS

W: 70 cm | 27,6"

D: 70 cm | 27,6"

H: 78 cm | 30,7"

SH: 43 cm | 16,9"

Product options, fabrics and technical details
on page 233





NEWMAN

ARMCHAIR AND OTTOMAN

Encapsulating the thrill of speed, the Newman is an elevated homage to the golden age of gentleman drivers. The piece's flawless structure is deceptively simple, yet undeniably striking. The detailed upholstery and seaming bears the mark of true craftsmanship. Its sensuous lines are enhanced by the immaculate metal touches, on the footer and the sides. The Newman brews a tangible sense of movement to a lounge.

AS PICTURED

Upholstery: Cotton Velvet, ref. Midnight Blue, CV17
Metal Details: Brushed brass
Footer: Brushed brass

DIMENSIONS

W: 78 cm | 30,7"
D: 93 cm | 36,6"
H: 75 cm | 29,5"
SH: 43 cm | 16,9"



NEWMAN OTTOMAN

AS PICTURED

Upholstery: Cotton Velvet, ref. Pure White, CV01
Footer: Brushed brass
Metal Details: Brushed brass

DIMENSIONS

W: 75 cm | 29,5"
D: 63 cm | 24,8"
H: 43 cm | 16,9"

Product options, fabrics and technical details
on page 233





SOPHIA

ARMCHAIR & OTTOMAN

The Sophia Armchair has an unmistakable poised stance that comes from its high-heel shaped metal feet and structure, in solid birch wood, and from its cosy seat cushions. Its softened cat eye wingback essence is enhanced by its detailed upholstery with exquisite seaming. The Sofia has true everlasting appeal.

AS PICTURED

Upholstery: Cotton Velvet, ref. Green Duck Egg, CV19
Legs: Polished brass

DIMENSIONS

W: 85 cm | 33,5"
D: 88 cm | 34,6"
H: 94 cm | 37"
SH: 45 cm | 17,7"
AH: 54 cm | 21,3"

SOPHIA OTTOMAN

AS PICTURED

Upholstery: Cotton Velvet, ref. Green Duck Egg, CV19
Legs: Polished brass.

DIMENSIONS

W: 60 cm | 23,6"
D: 45 cm | 17,7"
H: 48 cm | 18,9"

Product options, fabrics and technical details
on page 234





CORSET ARMCHAIR

The Corset Armchair is a tribute to the golden age of filmmaking, featuring the classic Hollywood Regency look with Munna's hallmark contemporary twist. Its deep seat, open back and slimmed down upholstered armrests brings back the retro glam style.

AS PICTURED

Upholstery: Cotton Velvet, ref. Red Casino, CV12

Legs: Red casino gloss lacquer

DIMENSIONS

W: 80 cm | 31,5"

D: 78 cm | 30,7"

H: 85 cm | 33,5"

SH: 45 cm | 17,7"

AH: 60 cm | 23,6"

Product options, fabrics and technical details
on page 234





CHANTAL

ARMCHAIR

The divas of the Yé-yé music movement are the muses for the Chantal. This youthful, seductive and naïf piece has bold retro lines, a generous soft back, upholstered armrests and sleek legs with brass covers. An ideal presence filled with charm and charisma.

AS PICTURED

Upholstery: Cotton Velvet, ref. Green Duck Egg, CV19

Legs: Upholstered with Cotton Velvet, ref. Green Duck Egg, CV19

Feet covers: Polished brass

DIMENSIONS

W: 78 cm | 30,7"

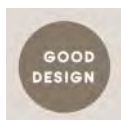
D: 88 cm | 34,6"

H: 85 cm | 33,5"

SH: 46 cm | 18,1"

AH: 62 cm | 24,4"

Product options, fabrics and technical details on page 235



Winner of the GOOD DESIGN® AWARD,
Furniture Category, 2017

Honorable Mention in the European
Product Design Awards,
Furniture Category, 2017





BLONDIE

ARMCHAIR

The Blondie is a bold armchair with a retro styled inspiration, and a modern high-backed design. The fully upholstered soft seat, arms and back make it a delight of comfort. Made to enamour.

AS PICTURED

Upholstery: Cotton Velvet, ref. Desert, CV03

Legs: Fully upholstered with Cotton Velvet, ref Desert, CV03

DIMENSIONS

W: 87 cm | 34,3"

D: 90 cm | 35,4"

H: 97 cm | 38,1"

SH: 47 cm | 18,5"

AH: 61 cm | 24"

Product options, fabrics and technical details on page 242





PRIVATE ARMCHAIR

Sporting an elegant silhouette, with appeasing and comfortable upholstery and elegant wooden feet, the Private's signature retro minimalist design is a versatile addition for any living space.

AS PICTURED

Upholstery: Trevira Velvet, ref. Antracite, TRV20
Legs: Antracite gloss lacquer

DIMENSIONS

W: 87 cm | 34,3"
D: 90 cm | 35,4"
H: 77 cm | 30,3"
SH: 42 cm | 16,5"
AH: 50 cm | 19,7"

Product options, fabrics and technical details
on page 235





HOUSTON

ARMCHAIR

Designed with a thorough but playful attention to geometry and form, the Houston Armchair has a glamorous 60's and 70's sci-fi retro look. Its quilted upholstery is reminiscent of the midcentury aesthetic, with proportions suited for contemporary living spaces.

AS PICTURED

Upholstery: Cotton Velvet, ref. Emerald, CV09

Legs: Emerald gloss lacquer

DIMENSIONS

W: 84 cm | 33,1"

D: 75 cm | 29,5"

H: 73 cm | 28,7"

SH: 45 cm | 17,7"

AH: 60 cm | 23,6"

Product options, fabrics and technical details
on page 235





LOUISE ARMCHAIR

The Louise Armchair features an enveloping and cosy curved shape. Its stylised lines are born out of a fondness of the iconic bob haircut, with detailed vertical seams that accentuate its graciousness. The metal footer provides a charming reflecting effect.

AS PICTURED

Upholstery:

Exterior - Cotton Velvet, ref. Pale Pink, CV02

Interior - Cotton Velvet, ref. Pure White, CV01

Footer: Polished brass

DIMENSIONS

W: 87 cm | 34,3"

D: 80 cm | 31,5"

H: 80 cm | 31,5"

SH: 44 cm | 17,3"

AH: 63 cm | 24,8"

Product options, fabrics and technical details
on page 236





JOSEPHINE

ARMCHAIR

Channeling the aesthetic of the Art Deco movement, the Josephine Armchair features a wonderfully elegant fan-shaped motif, with its accentuated curvy lines with decadent and lavish finish. The feminine curves are ravishingly enhanced by the different coloured toned pipping.

AS PICTURED

Upholstery: Cotton Velvet, ref. Light Grey, CV16

Piping: Wild silk, ref. Silver, WS07

Feet: Upholstered with Cotton Velvet, ref. Light Grey, CV16

DIMENSIONS

W: 93 cm | 36,6"

D: 92 cm | 36,2"

H: 82 cm | 32,3"

SH: 42 cm | 16,5"

AH: 58 cm | 22,8"

Product options, fabrics and technical details on page 236





FRINGES

ARMCHAIR

Fringes draws on the signature Franjas fashion theme, ruffling the scene and inviting guests with its fun and flirtatious feel. The three fringes run along the front and reverse of the wide seat, set against a curved backrest that completes its classic appearance.

AS PICTURED

Upholstery: Cotton Velvet, ref. Steel Blue, CV27

Fringes: Pale Blue 49

DIMENSIONS

W: 94 cm | 37"

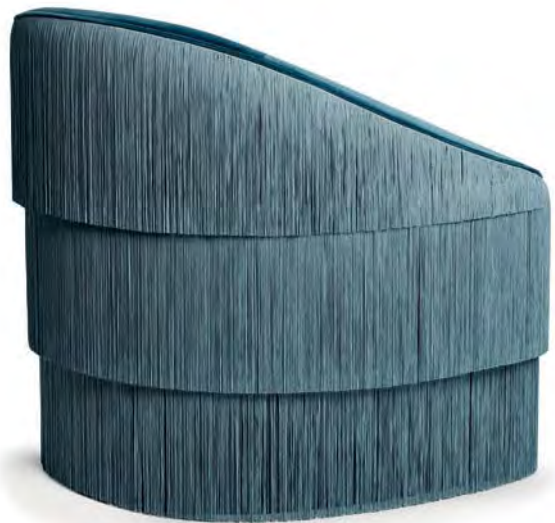
D: 85 cm | 33,5"

H: 90 cm | 35,4"

SH: 45 cm | 17,7"

AH: 56 cm | 22"

Product options, fabrics and technical details on pages 236





CANDY ARMCHAIR

This seemingly naïve and seductive piece is irresistibly comfortable and stylish, adorned with pipping and studded details. The squared tapered and splayed back legs give the Candy a lounge feel.

AS PICTURED

Upholstery: Cotton Velvet, ref. Mustard, CV10

Legs: Ebony wood veneer, gloss varnish

Upholstery nails: Bronze renaissance

DIMENSIONS

W: 73 cm | 28,7"

D: 83 cm | 32,7"

H: 99 cm | 39"

SH: 44 cm | 17,3"

AH: 48 cm | 18,9"

Product options, fabrics and technical details
on page 237





CLEO ARMCHAIR

Named after the iconic Egyptian queen, the Cleo Armchair is a classic tribute to the feminine form. An empowering piece featuring a body-contouring backrest fluted wing-like accents and deep vertical quilting. A powerful statement for a living space.

AS PICTURED

Upholstery: Trevira Velvet, ref. Camel, TRV13

Legs: Camel gloss lacquer

DIMENSIONS

W: 87 cm | 34,3"

D: 86 cm | 33,9"

H: 108 cm | 42,5"

SH: 44 cm | 17,3"

Product options, fabrics and technical details
on page 237





HERITAGE

ARMCHAIR & OTTOMAN

A tribute to the Heritage of Craftsmanship, the Heritage brings a true sense of classic to a living space. Sporting a curvy silhouette, the armchair's design has a fluted back and sloping armrests, counterbalanced with a glossy midcentury modern ebony wood veneer base. Its design lives up to its name, exuding an appeal beyond its time.

AS PICTURED

Upholstery: Cotton Velvet, ref. Midnight Blue, CV17

Legs: Midnight blue gloss lacquer

Nails: Bronze renaissance nails

DIMENSIONS

W: 85 cm | 33,5"

D: 89 cm | 35"

H: 102 cm | 40,2"

SH: 53 cm | 20,9"



HERITAGE OTTOMAN

AS PICTURED

Upholstery: Cotton Velvet, ref. Midnight Blue, CV17

Legs: Midnight blue gloss lacquer

Nails: Bronze renaissance nails

DIMENSIONS

W: 65 cm | 25,6"

D: 52 cm | 20,5"

H: 46 cm | 18,1"



Product options, fabrics and technical details
on page 238



SOFT & CREAMY ARMCHAIR & OTTOMAN

The Soft & Creamy Armchair strikes a balance between bold the exquisite legacy of handcrafted upholstery with a contemporary lightness, making it the consummate must-have. Taking its inspiration from a classic wingback chair, it subverts its traditional design with a capitonn e tufting on the backside of the backrest. Pure bliss.

AS PICTURED

Upholstery: Cotton Velvet, ref. Basalt, CV25

Legs: Basalt gloss lacquer

DIMENSIONS

W: 82 cm | 32,3"

D: 88 cm | 34,6"

H: 113 cm | 44,5"

SH: 44 cm | 17,3"

AH: 56 cm | 22"

SOFT & CREAMY OTTOMAN

AS PICTURED

Upholstery: Leather, ref. Milk, L01

Legs: White gloss lacquer

DIMENSIONS

W: 63 cm | 24,8"

D: 50 cm | 19,7"

H: 40 cm | 15,7"

Product options, fabrics and technical details
on pages 239





QUEEN B SWIVEL ARMCHAIR

The Queen B is pure charisma – it's sassy, looks fabulous in any mood in any color, the deep seat envelops, the exquisite seaming is masterful, the curved shapes enamour and the swivel steals hearts. As spicy as smooth, whatever the scene.

AS PICTURED

Upholstery: Cotton Velvet, ref. Green Duck Egg, CV19

DIMENSIONS

W: 100 cm | 39,4"

D: 100 cm | 39,4"

H: 93 cm | 36,6"

SH: 42 cm | 16,5"

Product options, fabrics and technical details
on page 239





FRANK

ARMCHAIR

The Frank is the ultimate take on a classic, the Club Chair. Featuring an enveloping composition of shapes, it's thorough embrace is perfect for relaxed seating. The arms support the light structure, as the curvy elements of the seat and back make it a statement design that does not compromise comfort. Nothing is cooler than Frank.

AS PICTURED

Upholstery: Bouclé Wool, ref. Sugar, BW02

DIMENSIONS

W: 105 cm | 41,3"

D: 90 cm | 35,4"

H: 79 cm | 31,1"

SH: 43 cm | 16,9"

AH: 58 cm | 22,8"

Product options, fabrics and technical details
on page 240





GRAN TORINO

ARMCHAIR

The Gran Torino feels like a welcoming ride to the perfect getaway. Irresistibly proportioned for lounging, and adorned with metal accents, this armchair brews a sense of lightness to a space. The detailed seaming flows throughout the silhouette of the piece, while the contrast between curved shapes and straight lines are a landscaped road you want to keep riding. A timestopper for living spaces in need of relaxation.

AS PICTURED

UPHOLSTERY: Bouclé Wool, ref. Snow, BW01
FOOTER: Polished Brass

DIMENSIONS

W: 108 cm | 42,5"

D: 96 cm | 37,8"

H: 85 cm | 33,5"

SH: 47 cm | 18,5"

AH: 66 cm | 26"

Product options, fabrics and technical details
on page 240





CUTIE

ARMCHAIR

Warm and cosy, the Cutie is a pure delight both for the eye and the touch. Upholstered in a long-haired fantasy fur, it is the definition of larger than life glam. Perfect for making a living space absolutely irresistible.

AS PICTURED

Upholstery: Fantasy Fur, ref. FF01

Legs: Gold leaf, gloss varnish

DIMENSIONS

W: 100 cm | 39,4"

D: 88 cm | 34,6"

H: 78 cm | 30,7"

SH: 47 cm | 18,5"

AH: 67 cm | 26,4"

Product options, fabrics and technical details
on page 240





OLYMPIA

ARMCHAIR

Olympia projects pure haute couture from this three-piece suite, with its sensuous feminine outline and voluptuous shape. Each exquisitely curved design features detailed seaming to the front and reverse, surmounting either bold metal stands or exposed legs enclosed by a brass cirlet, creating the pièce de résistance for any interior.

AS PICTURED

Upholstery: Cotton Velvet, ref. Emerald, CV09
Footer: Brushed brass
Version: Left

DIMENSIONS

W: 110 cm | 43,3"
D: 100 cm | 39,4"
H: 91 cm | 35,8"
SH: 42 cm | 16,5"

Product options, fabrics and technical details on page 241





MARGARET ARMCHAIR

Stately and cosy, the Margaret Armchair is a feminine and sartorial piece that brings effortless style to an interior. It has distinguished and charismatic long lines, sinuous curves and a rich seat cushion with lavish upholstery.

AS PICTURED

Upholstery: Cotton Velvet, ref. Antique Pink, CV28

Legs: Upholstered with Cotton Velvet,
ref. Antique Pink, CV28

DIMENSIONS

W: 101 cm | 39,8"

D: 87 cm | 34,3"

H: 94 cm | 37"

SH: 48 cm | 18,9"

AH: 60 cm | 23,6"

Product options, fabrics and technical details
on page 241





LUKE ARMCHAIR

The Luke Armchair is a timecapsule of style. Taking queues from the most fashionable styles of scarfs in history, it's subtle and layered composition create a dynamic and effortlessly stylish presence. From the half round composition of the arms, to its graceful seat and back curvature, the Luke is a generous seater that will keep its composure no matter how chilled you are.

AS PICTURED

UPHOLSTERY: Cotton Velvet, Blue Grey, CV07

DIMENSIONS

W: 120 cm | 47,2"

D: 110 cm | 43,3"

H: 82 cm | 32,3"

SH: 47 cm | 18,5"

AH: 72 cm | 28,3"

Product options, fabrics and technical details on page 242





BE MINE LOVESEAT

The Be Mine Loveseat is a refreshing take on the Chesterfield style. Designed to be part of a love story, the piece makes use of the style's iconic diamond button tufting and generous stuffing, with the unmistakable Munna contemporary twist.

AS PICTURED

Upholstery: Cotton Velvet, ref. Purple, CV13

Legs: Rosewood veneer, gloss varnish

DIMENSIONS

W: 145 cm | 57,1"

D: 93 cm | 36,6"

H: 80 cm | 31,5"

SH: 45 cm | 17,7"

AH: 66 cm | 26"

Product options, fabrics and technical details
on page 241





HERITAGE

REVISITED BY SUSANA MARTINS
LIMITED EDITION OF 12 PIECES

A true tribute to the Heritage of Craftsmanship, this Limited Edition has 5,236 pieces of Portuguese silver filigree. The technique of filigree dates back to the third millennium B.C., and has been handed down from generation to generation. This ancient art of ornamental openwork wrought of fine silver wire turns this piece into a true objet d'art. It demands great skill, as the curling, twisting and plaiting fine, pliable threads of metal are devised by hand. The pieces are then united in their points of contact by means of silver solder and borax. The Heritage is a jewel for a living space.

Susana Martins is a Portuguese Jewelry designer.

AS PICTURED

Upholstery: Cotton Satin, ref. Back, CTS06

Legs: Black gloss lacquer

Silver details: 5,236 pieces of Portuguese silver filigree, in 187 modules, with a total weight of 5800 grams.

Dimensions

W: 83 cm | 32,7"

D: 85 cm | 33,5"

H: 98 cm | 38,6"

SH: 47 cm | 18,5"

Technical details on page 242





SOFT & CREAMY

REVISITED BY GONALO CAMPOS
LIMITED EDITION OF 12 PIECES

The Soft & Creamy Limited Edition Armchair strikes a balance between bold the exquisite legacy of handcrafted upholstery with a contemporary lightness. Taking its inspiration from a classic wingback chair, it subverts its traditional design with exposed buttoning on the backside of the backrest. The gold leaf on the wood structure enhances the craftsmanship and high-end upholstery.

Gonalo Campos is a Portuguese Product designer.

AS PICTURED

Upholstery: Cotton Velvet, ref. Light Grey, CV16
Legs and frame: Solid beech frame in gold leaf with gloss finishing

Dimensions

W: 82 cm | 32,3"

D: 88 cm | 34,6"

H: 113 cm | 44,5"

SH: 44 cm | 17,3"

AH: 56 cm | 22"

Technical details on page 243





CAPRICE

REVISITED BY INÊS CALEIRO
LIMITED EDITION OF 12 PIECES

The clean lines and retro silhouette of the Caprice are deceptively simple. Its lush upholstery details and exquisite piping in the back make it an intricate but soothing piece. The Limited Edition reinvents its original form with a play on architectural geometry on its structure and feet.

Inês Caleiro is a Portuguese Shoe designer.

AS PICTURED

Upholstery: Cotton Satin, ref. Castor, CTS02

Piping in old gold vinyl

Legs: Gold leaf and lacquer in lime colour

Dimensions

W: 70 cm | 27,6"

D: 72 cm | 28,3"

H: 77 cm | 30,3"

SH: 42 cm | 16,5"

Technical details on page 243





BECOMES ME

REVISITED BY TONI GRILLO
LIMITED EDITION OF 12 PIECES

The Becomes Me Armchair is the epitome of serenity inducing design, along with Munna's exquisite signature finery and craftsmanship. The Limited Edition revisits the concept with its embracing silhouette and luxurious deep seat, sensuous curves and comfortable back. These features perfectly adapt to the body, while its metal structure provides a sense of refuge. Indeed, it becomes you.

Toni Grilo is a French-Portuguese Product designer.

AS PICTURED

Upholstery: Leather, ref. Milk, l01

Metal Structure: Stainless Steel in brass finishing

Legs: Gloss gold leaf

Dimensions

W: 74 cm | 29,1"

D: 86 cm | 33,9"

H: 172 cm | 67,7"

SH: 43 cm | 16,9"

Technical details on page 243







FERDINAND

350 SOFA

The Ferdinand sofa is the embodiment of magnetism. Featuring tailored upholstery and a stylish footer, it is masterfully crafted with an emphatic, yet elegant, curved contour. The Ferdinand is a statement piece that exudes effortless charisma.

AS PICTURED

Upholstery: Cotton Velvet, ref. Light Grey, CV16

Footer: Brushed brass

DIMENSIONS

W: 350 cm | 137,8"

D: 185 cm | 72,8"

H: 80 cm | 31,5"

SH: 41 cm | 16,1"

AH: 56 cm | 22,1"

Product options, fabrics and technical details
on page 244





MAVERICK

280 SOFA

Maverick makes a bold statement with its clean and captivating design, delivering an effortlessly cool finish.

The poised back enhances its built-in seat cushion, complemented by discreet seaming to complete its faultless look.

AS PICTURED

Upholstery: Trevira Velvet, ref. Light Grey, TRV19; padded with foam and feathers

DIMENSIONS

W: 280 cm | 110,2"

D: 120 cm | 47,2"

H: 90 cm | 35,4"

SH: 42 cm | 16,5"

AH: 58 cm | 22,8"

Product options, fabrics and technical details on page 244





FRINGES

280 SOFA

Fringes draws on the signature Franjas fashion theme, ruffling the scene and inviting guests with its fun and flirtatious feel.

The three fringes run along the front and reverse of the wide seat, set against a curved backrest that completes its classic appearance.

AS PICTURED

Upholstery: Cotton Velvet, ref. Antique Pink, CV28

Fringes: Antique Pink 18

DIMENSIONS

W: 280 cm | 110,2"

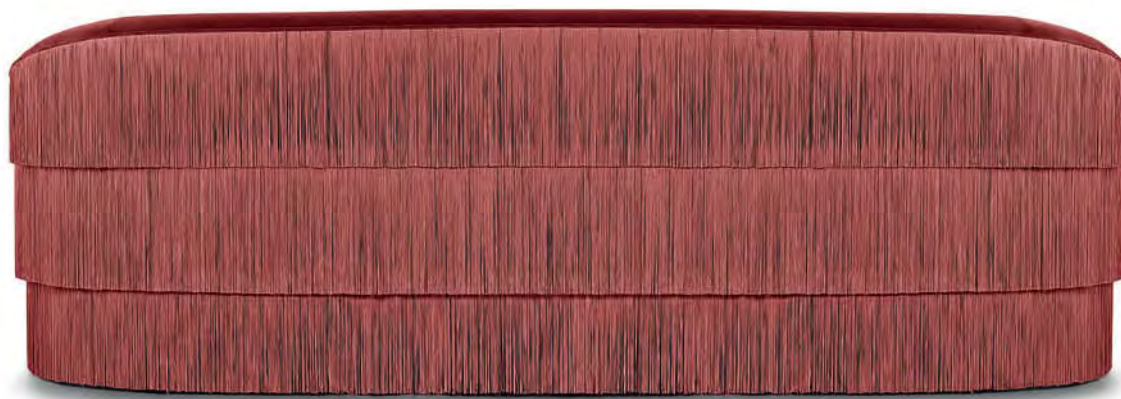
D: 100 cm | 39,4"

H: 91 cm | 35,8"

SH: 48 cm | 18,9"

AH: 60 cm | 23,6"

Product options, fabrics and technical details on page 244





ROSIE

280 SOFA

The Rosie breathes heritage, taking notes from curves and silhouettes from eras of unmatched elegance. The sleek curvy lines, superb and cosy high back and perfectly proportioned seat, make the Rosie the very definition of a true Classic, with that unmistakable Munna twist.

AS PICTURED

Upholstery: Cotton Velvet, ref. Green Duck Egg, CV19

LEGS: Fully upholstered in Cotton Velvet, ref. Green Duck Egg, CV19

DIMENSIONS

W: 280 cm | 110,2"

D: 98 cm | 38,6"

H: 100 cm | 39,4"

SH: 47 cm | 18,5"

AH: 55 cm | 21,6"

Product options, fabrics and technical details on page 245





JOSEPHINE

280 SOFA

Channeling the aesthetic of the Art Deco movement, the Josephine Sofa features a wonderfully elegant fan-shaped motif, with its accentuated curvy lines with decadent and lavish finish. The feminine curves are ravishingly enhanced by the different coloured toned pipping.

AS PICTURED

Upholstery: Cotton Velvet, ref. Emerald, CV09

Piping: Wild silk, ref. Silver, WS07

Feet: Upholstered with Cotton Velvet, ref. Emerald, CV09

DIMENSIONS

W: 280 cm | 110,2"

D: 103 cm | 40,6"

H: 83 cm | 32,7"

SH: 42 cm | 16,5"

AH: 58 cm | 22,8"

Product options, fabrics and technical details on page 245





MARGOT

280 SOFA

This mid-century styled sofa develops an exquisite dialogue between horizontal and vertical shapes. The six feet and geometrical back sections convey an architectural feel, with a detailed build and interplay between forms. It is nothing but trademark Munna: exuberant yet curated, filled with quiet details that wouldn't be out of place in haute couture. Its indulgent seat is perfect for living spaces in need of some poised relaxation.

AS PICTURED

Upholstery: Trevira Velvet, ref. Steel Blue, TRV05;
padded with foam and feathers.
Pillows: Trevira Velvet, ref. Steel Blue, TRV05
Legs: Polished Brass

DIMENSIONS

W: 280 cm | 110,2"

D: 137 cm | 53,9"

H: 93 cm | 36,6"

SH: 46 cm | 18,1"

Product options, fabrics and technical details
on page 245





GRAN TORINO

280 SOFA

The Gran Torino feels like a welcoming ride to the perfect getaway. Irresistibly proportioned for lounging, and adorned with metal accents, this sofa brews a sense of lightness to a space. The detailed seaming flows throughout the silhouette of the piece, while the contrast between curved shapes and straight lines are a landscaped road you want to keep riding. A timestopper for living spaces in need of relaxation.

AS PICTURED

Upholstery: Bouclé Wool, ref. Snow, BW01
Footer: Polished brass.

DIMENSIONS

W: 280 cm | 110,2"

D: 96cm | 37,8"

H: 85cm | 33,5"

SH: 47 cm | 18,5"

AH: 66 cm | 26"



Product options, fabrics and technical details
on page 246





KIKI

260 SOFA

A sofa with a high back and long seat that is designed for talking, for lounging, for sharing secrets and laughs. The Kiki's high back is like an embrace, while the curvy and low seat is comfortable however you may sit, and the detailed seaming patterns in the back give it the trademark Munna's master craftsmen twist.

AS PICTURED

Upholstery: Cotton Velvet, ref. Milkshake Pink, CV29
Footer: Upholstered with Cotton Velvet, ref. Milkshake Pink, CV29

DIMENSIONS

W: 260 cm | 102,4"

D: 132 cm | 51,9"

H: 114 cm | 44,9"

SH: 47 cm | 18,5"

Product options, fabrics and technical details
on page 246





LOUIS

SOFA

Bearing the heritage of the eternally stylish Louis XIV era, the Louis is a statement piece that features a shapely silhouette enhanced by the elegant shallow floral carvings and curvilinear forms. The combination of contrasting textures creates a stunning, effortlessly dapper effect.

AS PICTURED

Upholstery: Cotton Velvet, ref. Black, CV06
Legs: Stain in Ral 9005, with matt varnish.

DIMENSIONS

W: 250 cm | 98,4"

D: 97 cm | 38,2"

H: 94 cm | 37"

SH: 45 cm | 17,7"

AH: 62 cm | 24,4"

Product options, fabrics and technical details
on page 246



LUKE

240 SOFA

The Luke Sofa is a timecapsule of style. Taking queues from the most fashionable styles of scarfs in history, it's subtle and layered composition create a dynamic and effortlessly stylish presence. From the half round composition of the arms, to its graceful seat and back curvature, the Luke is a generous 3 seater that will keep its composure no matter how chilled you are.

AS PICTURED

UPHOLSTERY: Cotton Velvet, Blue Grey, CV07

DIMENSIONS

W: 240 cm | 94,5"

D: 110 cm | 43,3"

H: 82 cm | 32,3"

SH: 47 cm | 18,5"

AH: 72 cm | 28,3"

Product options, fabrics and technical details on page 247





LOUISE

240 SOFA

The Louise Sofa features an enveloping and cosy curved shape. Its stylised lines are born out of a fondness of the iconic bob haircut, with detailed vertical seams that accentuate its graciousness.

AS PICTURED

Upholstery:

Exterior - Cotton Velvet, ref. Desert, CV03

Interior - Cotton Velvet, ref. Pale Pink, CV02

Footer: Brushed brass

DIMENSIONS

W: 240 cm | 94,5"

D: 110 cm | 43,3"

H: 83 cm | 32,7"

SH: 45 cm | 17,7"

AH: 63 cm | 24,8"

Product options, fabrics and technical details
on page 247





HUGHES

240 SOFA

Grand and majestic, the Hughes Sofa's draws its silhouette from the golden age of aviation, embodying a feeling of extravagance and singularity of the time. Its stylish and unusual asymmetrical back unexpectedly follows the smooth line of the body. Its use of noble materials make it the definitive iconic piece for any living space.

AS PICTURED

Upholstery: Cotton Velvet, ref. Blue Grey, CV07

Upper Footer: Gloss ebony wood veneer

Lower Footer: Polished brass

Version: Left

DIMENSIONS

W: 240 cm | 94.5"

D: 95 cm | 37.4"

H: 95 cm | 37.4"

SH: 44 cm | 17.3"

AH: 64 cm | 25.2"

Product options, fabrics and technical details on page 247



Winner of the International Product Design Award, Seating category, 2014.





JOSEPHINE

230 SOFA

Channeling the aesthetic of the Art Deco movement, the Josephine Sofa features a wonderfully elegant fan-shaped motif, with its accentuated curvy lines with decadent and lavish finish. The feminine curves are ravishingly enhanced by the different coloured toned pipping.

AS PICTURED

Upholstery: Cotton Velvet, ref. Light grey, CV16

Pipping: Wild silk, ref. Silver, WS07

Feet: Upholstered with Cotton Velvet, ref. Light Grey, CV16

DIMENSIONS

W: 230 cm | 90,6"

D: 103 cm | 40,6"

H: 83 cm | 32,7"

SH: 42 cm | 16,5"

AH: 58 cm | 22,8"

Product options, fabrics and technical details on page 248





ROSIE

230 SOFA

The Rosie breathes heritage, taking notes from curves and silhouettes from eras of unmatched elegance. The sleek curvy lines, superb and cosy high back and perfectly proportioned seat, make the Rosie the very definition of a true Classic, with that unmistakable Munna twist.

AS PICTURED

Upholstery: Cotton Velvet, ref. Green Duck Egg, CV19

LEGS: Fully upholstered in Cotton Velvet, ref. Green Duck Egg, CV19

DIMENSIONS

W: 230 cm | 90,5"

D: 98 cm | 38,6"

H: 100 cm | 39,4"

SH: 47 cm | 18,5"

AH: 55 cm | 21,6"

Product options, fabrics and technical details on page 248



NEWMAN

230 SOFA

Encapsulating the thrill of speed, the Newman is an elevated homage to the golden age of gentleman drivers. The piece's flawless structure is deceptively simple, yet undeniably striking. The detailed upholstery and seaming bears the mark of true craftsmanship. Its sensuous lines are enhanced by the immaculate metal touches, on the footer and the sides. The Newman brews a tangible sense of movement to a lounge.

AS PICTURED

Upholstery: Cotton Velvet, ref. Steel Blue, CV27

Metall Details: Brushed brass

Footer: Brushed brass

DIMENSIONS

W: 230 cm | 90,6"

D: 93 cm | 36,6"

H: 75 cm | 29,5"

SH: 43 cm | 16,9"

Product options, fabrics and technical details on page 248





SOPHIA

210 SOFA

The Sophia Sofa has an unmistakable poised stance that comes from its high-heel shaped metal feet and structure, in solid birch wood, and from its cosy seat cushions. Its softened cat eye wingback essence is enhanced by its detailed upholstery with exquisite seaming. The Sofia has true everlasting appeal.

AS PICTURED

Upholstery: Cotton Velvet, ref. Pure White, CV01

Legs: Polished brass

DIMENSIONS

W: 210 cm | 82,7"

D: 88 cm | 34,6"

H: 94 cm | 37"

SH: 45 cm | 17,7"

AH: 54 cm | 21,3"

Product options, fabrics and technical details
on page 249





MARGARET

210 SOFA

Stately and cosy, the Margaret Sofa is a feminine and sartorial piece that brings effortless style to an interior. It has distinguished and charismatic long lines, sinuous curves and a rich seat cushion with lavish upholstery.

AS PICTURED

Upholstery: Cotton Velvet, ref. Lilac CV15

Legs: Upholstered with Cotton Velvet, ref. Lilac CV15

DIMENSIONS

W: 210 cm | 82,7"

D: 92 cm | 36,2"

H: 95 cm | 37,4"

SH: 48 cm | 18,8"

AH: 60 cm | 23,6"

Product options, fabrics and technical details
on page 249





FRINGES

2 SEAT SOFA

Fringes draws on the signature Franjas fashion theme, ruffling the scene and inviting guests with its fun and flirtatious feel. The two fringes run all around the piece, completing its classic appearance.

AS PICTURED

UPHOLSTERY: Cotton Velvet, ref. Mustard, Cv10

FRINGES: Camel 117

DIMENSIONS

W: 165 cm | 65"

D: 100 cm | 39,4"

H: 91 cm | 35,8"

SH: 47 cm | 18,5"

Product options, fabrics and technical details
on page 249





NEWMAN

2 SEAT SOFA

Encapsulating the thrill of speed, the Newman is an elevated homage to the golden age of gentleman drivers. The piece's flawless structure is deceptively simple, yet undeniably striking. The detailed upholstery and seaming bears the mark of true craftsmanship. Its sensuous lines are enhanced by the immaculate metal touches, on the footer and the sides. The Newman brews a tangible sense of movement to a lounge.

AS PICTURED

Upholstery: Cotton Velvet, ref. Emerald, CV09

Metall Details: Brushed brass

Footer: Brushed brass

DIMENSIONS

W: 150 cm | 59,1"

D: 93 cm | 36,6"

H: 75 cm | 29,5"

SH: 43 cm | 16,9"

Product options, fabrics and technical details on page 250





SOFT & CREAMY 2 SEAT SOFA

The Soft & Creamy Sofa strikes a balance between bold the exquisite legacy of handcrafted upholstery with a contemporary lightness, making it the consummate must-have. Taking its inspiration from a classic wingback chair, it subverts its traditional design with a capitonnée tufting on the backside of the backrest. Pure bliss.

AS PICTURED

Upholstery: Cotton Velvet, ref. Midnight Blue, CV17
Legs: Midnight Blue gloss lacquer

DIMENSIONS

W: 150 cm | 59,1"
D: 92 cm | 36,2"
H: 113 cm | 44,5"
SH: 44 cm | 17,3"
AH: 56 cm | 22"

Product options, fabrics and technical details
on page 250





HOUSTON

2 SEAT SOFA

Designed with a thorough but playful attention to geometry and form, the Houston Armchair has a glamorous 60's and 70's sci-fi retro look. Its quilted upholstery is reminiscent of the midcentury aesthetic, with proportions suited for contemporary living spaces.

AS PICTURED

Upholstery: Cotton Velvet, ref. Emerald, CV09

Legs: Emerald gloss lacquer

DIMENSIONS

W: 150 cm | 59,1"

D: 75 cm | 29,5"

H: 73 cm | 28,7"

SH: 45 cm | 17,7"

AH: 60 cm | 23,6"

Product options, fabrics and technical details
on page 250





MONSIEUR T

2 SEAT SOFA

The Monsieur T Sofa is a bold, commanding design that offers a brilliant balance between contemporary and more traditional styles. The outstanding accuracy in the diamond tufting and pipping techniques, make this design a beautiful masterpiece for an ultimate seating experience.

AS PICTURED

Upholstery: Classic Leather, ref. Dark Ruby, CL05

Legs: Walnut wood veneer in gloss

DIMENSIONS

W: 154 cm | 60,6"

D: 77 cm | 30,3"

H: 82 cm | 32,3"

SH: 43 cm | 16,9"

AH: 45 cm | 17,7"

Product options, fabrics and technical details
on page 251





BECOMES ME

2 SEAT SOFA

The Becomes Me Sofa is the epitome of serenity inducing design. With an embracing silhouette and luxurious deep seat, its sensuous curves and comfortable back perfectly adapt to the body. The nails adorning the curves and back of the pieces provide a soothing feel to its lines. It is a truly feminine, soft and pleasant design that sets out to be like a second skin. Indeed, it becomes you.

AS PICTURED

Upholstery: Twill FR, ref. Moss, TFR 08

Legs: Moss gloss lacquer

Upholstery nails: Plated nickel

DIMENSIONS

W: 150 cm | 59,1"

D: 76 cm | 29,9"

H: 82 cm | 32,3"

SH: 43 cm | 16,9"

AH: 50 cm | 19,7"

Product options, fabrics and technical details on page 251





CANDY 2 SEAT SOFA

This seemingly naïve and seductive piece is irresistibly comfortable and stylish, adorned with pipping and studded details. The squared tapered and splayed back legs give the Candy Sofa a lounge feel.

AS PICTURED

Upholstery: Cotton Satin, ref. Castor, CTS02

Legs: Ebony wood veneer, gloss varnish

Upholstery nails: Plated nickel

DIMENSIONS

W: 135 cm | 53,1"

D: 85 cm | 33,5"

H: 95 cm | 37,4"

SH: 44 cm | 17,3"

AH: 48 cm | 18,9"

Product options, fabrics and technical details
on page 252





PRIVATE 2 SEAT SOFA

Sporting an elegant silhouette, with appeasing and comfortable upholstery and elegant wooden feet, the Private's signature retro minimalist design is a versatile addition for any living space.

AS PICTURED

Upholstery: Trevira Velvet, ref. Lime, TRV12
Legs: Ebony wood veneer, gloss varnish

DIMENSIONS

W: 130 cm | 51,2"

D: 90 cm | 35,4"

H: 77 cm | 30,3"

SH: 42 cm | 16,5"

AH: 50 cm | 19,7"

Product options, fabrics and technical details
on page 252





LIPSTICK

2 SEAT SOFA

The Lipstick is an Art Deco inspired piece that brings the femininity of the boudoir to any living space with its sumptuous vertical pleated upholstery, round tapered legs and splayed back legs.

AS PICTURED

Upholstery: Cotton Velvet, ref. Antique Pink CV28

Legs: Antique Pink gloss lacquer

Upholstery nails: Plated nickel

DIMENSIONS

W: 130 cm | 51,2"

D: 76 cm | 29,9"

H: 79 cm | 31,1"

SH: 44 cm | 17,3"

Product options, fabrics and technical details on page 253





YES NO MAYBE SO CONVERSATION SOFA

Inspired by the grandiose style of Louis XV and XVI, the Yes No May Be So Conversation Sofa is faithful to the original Tête-à-Tête silhouette. The turned wood dowel backrests, sumptuously deep seat and beautifully carved frame create a most definitive scene stealer.

AS PICTURED

Upholstery: Cotton Velvet, ref. Lilac, CV15

Legs: Lilac gloss lacquer

DIMENSIONS

W: 146 cm | 57,5"

D: 70 cm | 27,6"

H: 76 cm | 29,9"

SH: 45 cm | 17,7"

AH: 76 cm | 29,9"

Product options, fabrics and technical details
on page 253





MADELEINE

ROUND SOFA

The Madeleine Round Sofa is a revisited icon from the Victorian Era. Bright, light and feminine, this opulent signature piece is the perfect setting for a flirting scene from any given British literature classic. Who wouldn't want that kind of romance in their living space?

AS PICTURED

Upholstery: Cotton Satin, ref. Desert, CTS02

Piping: Cotton Satin, ref. Desert, CTS02

Feet: Black matt lacquer

DIMENSIONS

W: 180 cm | 70,9"

D: 180 cm | 70,9"

H: 97 cm | 38,2"

SH: 43 cm | 16,9"

AH: 63 cm | 24,8"

Product options, fabrics and technical details
on page 253



EMMA

CHAISE LONGUE

Emma harks back to the Victorian Age, evoking the spirit of a time when these opulent day beds served as the epitome of class and style.

The sumptuous upholstery boasts the classic Chesterfield style, with both diamond button and capitonnée tufting to the tapered backrest and underside, culminating in a truly timeless piece of furniture.

AS PICTURED

Upholstery: Trevira Velvet, ref. Moss, TRV10

Legs: Moss gloss lacquer.

DIMENSIONS

W: 196 cm | 77,2"

D: 96 cm | 37,8"

H: 80 cm | 31,5"

SH: 52 cm | 20,5"

AH: 80 cm | 31,5"

Product options, fabrics and technical details on page 254





OLYMPIA

CHAISE LONGUE

Olympia projects pure haute couture from this three-piece suite, with its sensuous feminine outline and voluptuous shape.

Each exquisitely curved design features detailed seaming to the front and reverse, surmounting either bold metal stands or exposed legs enclosed by a brass cirlet, creating the pièce de résistance for any interior.

AS PICTURED

Upholstery: Cotton Velvet, ref. Emerald, CV09

Footer: Brushed brass

Version: Left

DIMENSIONS

W: 217 cm | 85,4"

D: 118 cm | 46,5"

H: 94 cm | 37"

SH: 43 cm | 16,9"

Product options, fabrics and technical details on page 254





YIN YANG SOFA

This is a story of dualism. How the seemingly opposed is complementary, interconnected and interdependent. One exists in relation to the other. Feminine and masculine, cosy and open. An exercise of balance, harmony of taste, soul and handcraft.

Based on 3 different module sizes, the Yin Yang Modular Sofa can be connected in numerous compositions. Crafted by hand in sumptuous cotton velvet, the YY is adorned by delicate metal details in brass, nickel or copper. Modular, just like life.

Designed in collaboration by Axel Huynh and Munna.



AS PICTURED

UPHOLSTERY: Cotton Velvet, ref. Pure White CV01; Cotton Velvet, ref. Black CV06
FOOTER: Brushed Brass

SUGGESTED COMPOSITION

DIMENSIONS

W: 460 cm | 181,1"
D: 206 cm | 81,1"
H: 123 cm | 48,4"
SH: 57 cm | 22,4"

Module dimensions, product options, fabrics and technical details on page 254 and 255





CHAIRS



FRANÇOISE CHAIR

The Françoise is elegant, mysterious and charismatic. Its bold retro lines and soft seat make it an effortless head turner. The consummate chair for tous les garçons et les filles.

AS PICTURED

Upholstery: Cotton velvet, ref. Emerald, CV09
Legs: Emerald Gloss lacquer

DIMENSIONS

W: 45 cm | 17,7"

D: 56 cm | 22"

H: 83 cm | 32,7"

SH: 48 cm | 18,9"

Product options, fabrics and technical details
on page 255





MARY Q CHAIR

Sculptural and fashionable, the Mary Q draws inspiration from miniskirts and the style icons of the 1960's. The fine low backrest and long legs are a tribute to its influences, and a statement for a dining room. Retro and contemporary, the Mary Q is the definition of timeless design.

AS PICTURED

Upholstery: Cotton Velvet, ref. Basalt, CV25

Legs: Basalt gloss lacquer

DIMENSIONS

W: 58 cm | 22,8"

D: 62 cm | 24,4"

H: 75 cm | 29,5"

SH: 50 cm | 19,7"

AH: 65 cm | 25,6"

Product options, fabrics and technical details
on page 256





POLAIRE CHAIR

Drawing from the impossibly elegant waistlines of the pin ups, the Polaire Armchair is a sensuous piece that offers a generous seat without compromising a gracefulness that defines Munna's signature design. The seaming details are exquisitely crafted, like a silhouette adorning corset.

AS PICTURED

Upholstery: Leather, ref. Pale Green, L15

Legs: Pale Green gloss lacquer

DIMENSIONS

W: 56 cm | 22"

D: 54 cm | 23,1"

H: 81 cm | 31,9"

SH: 47 cm | 18,5"

Product options, fabrics and technical details on page 256





MONSIEUR T CHAIR

The Monsieur T Chair is a bold, commanding design that offers a brilliant balance between contemporary and more traditional styles. The outstanding accuracy in the diamond tufting and pipping techniques, make this design a beautiful masterpiece for an ultimate dining experience.

AS PICTURED

Upholstery: Leather, ref. Black, L06

Legs: Black gloss lacquer

Upholstery nails: Plated nickel

DIMENSIONS

W: 64 cm | 25,2"

D: 64 cm | 25,2"

H: 89 cm | 35"

SH: 45 cm | 17,7"

AH: 48 cm | 18,9"

Product options, fabrics and technical details on page 256





CORSET CHAIR

The Corset Chair is a tribute to the golden age of filmmaking, featuring the classic Hollywood Regency look with Munna's hallmark contemporary twist. Its deep seat, open back and slimmed down upholstered armrests brings back the retro glam style.

AS PICTURED

Upholstery: Cotton Velvet, ref. Desert CV03

Legs: Desert gloss lacquer

DIMENSIONS

W: 57 cm | 22,4"

D: 60 cm | 23,6"

H: 93 cm | 36,6"

SH: 53 cm | 20,8"

AH: 66 cm | 25,9"

Product options, fabrics and technical details
on page 257





BECOMES ME CHAIR

The Becomes Me Chair is the epitome of serenity inducing design. With an embracing silhouette and luxurious deep seat, its sensuous curves and comfortable back perfectly adapt to the body. The nails adorning the curves and back of the pieces provide a soothing feel to its lines. It is a truly feminine, soft and pleasant design that sets out to be like a second skin. Indeed, it becomes you.

AS PICTURED

Upholstery: Cotton velvet, ref. Emerald, CV09

Legs: Upholstered with Cotton velvet, ref. Emerald, CV09

Upholstery nails: Bronze Renaissance

DIMENSIONS

W: 61 cm | 24"

D: 65 cm | 25,6"

H: 96 cm | 37,8"

SH: 45 cm | 17,7"

AH: 52 cm | 20,5"

Product options, fabrics and technical details
on page 257





COLEMAN CHAIR

Coleman recalls an era of bold retro lines and geometric forms, featuring an outstanding functional design infused with savoir flair. The exposed legs support a wing-shaped padded seat and backrest, creating an impression of floating that results in this edgy appearance.

AS PICTURED

Upholstery: Trevira Velvet, ref. Magnolia, TRV01

Legs: Ebony wood veneer, gloss varnish

Metal details: Brushed Brass

DIMENSIONS

W: 48 cm | 18,9"

D: 63 cm | 24,8"

H: 81 cm | 31,9"

SH: 49 cm | 19,3"

Product options, fabrics and technical details
on page 257





DAISY CHAIR

The Daisy redefines the need for curves in an interior. As playful as it is graceful, its superbly detailed segments in the front and reverse provide a plateau where the seat gently lays. An absolute must for a dining setting with a sense of fun.

AS PICTURED

Upholstery: Cotton Velvet, ref. Peach, CV20

Legs: Upholstered with Cotton Velvet, ref. Peach, CV20

DIMENSIONS

W: 64 cm | 25,2"

D: 62 cm | 24,4"

H: 84 cm | 33,1"

SH: 48 cm | 18,9"

Product options, fabrics and technical details
on page 258





AILEEN CHAIR

Aileen revives the style of the ancient Greek Klismos chair, designed to provide the sitter with graceful comfort. The tapered legs support an elegant seating section, surmounted by a curved buttoned backrest accented by detailed seams.

AS PICTURED

Upholstery: Cotton Velvet, ref. Light Grey, CV16
Legs: Upholstered in Cotton Velvet, ref. Light Grey, CV16

DIMENSIONS

W: 60 cm | 23,6"
D: 60 cm | 23,6"
H: 78 cm | 30,7"
SH: 50 cm | 19,7"

Product options, fabrics and technical details
on page 258





MELODY CHAIR

Like a song that starts with a gentle melody, the front of this chair is composed as a verse, with a smooth seat, backrest and legs. The scene is set for the explosion of the chorus, bursting from its quilted back, infused with detailed seaming and exuberant curved lines. The Melody Chair is made to entertain, between song and dance.

AS PICTURED

Upholstery: Cotton Velvet, ref. Peach, CV20

Legs: Upholstered in Cotton Velvet, ref. Peach, CV20

DIMENSIONS

W: 54 cm | 21,2"

D: 60 cm | 23,6"

H: 92 cm | 36,2"

SH: 51 cm | 20"

Product options, fabrics and technical details on page 258





LIPSTICK SWIVEL CHAIR

The Lipstick is an Art Deco inspired piece that brings the femininity of the boudoir to any living space with its sumptuous vertical pleated upholstery, while its rounded swivel base makes it a joyful seating experience.

AS PICTURED

Upholstery: Cotton Velvet, ref. Steel Blue, CV27

Upholstery nails: Bronze Renaissance

DIMENSIONS

W: 60 cm | 23,6"

D: 66 cm | 26"

H: 80 cm | 31,5"

SH: 51 cm | 20"

Also available without swivel.

Product options, fabrics and technical details on page 259







CHARLOTTE

BAR & COUNTER STOOL

The Charlotte's long and generous seat and low back support captures the feel of a Sunday morning spent at the tracks, gazing the breathtaking elegance of horseback riding. The vertical seams accentuate the long seat, and the metal details create a charming effect.

AS PICTURED

Upholstery: Twill FR, ref. Raspberry, TFR11

Legs: Raspberry gloss lacquer

Metal detail: Brushed Brass

Feet Covers: Brushed Brass

BAR STOOL | DIMENSIONS

W: 46 cm | 18,1"

D: 47 cm | 18,5"

H: 92 cm | 36,2"

SH: 80 cm | 31,5"

COUNTER STOOL | DIMENSIONS

W: 46 cm | 18,1"

D: 47 cm | 18,5"

H: 82 cm | 32,3"

SH: 70 cm | 27,6"

Product options, fabrics and technical details on page 259





POLAIRE

BAR & COUNTER STOOL

Drawing from the impossibly elegant waistlines of the pin ups, the Polaire Bar & Counter Stool is a sensuous piece that offers a generous seat without compromising a gracefulness that defines Munna's signature design. The seaming details are exquisitely crafted, like a silhouette adorning corset.

AS PICTURED

Upholstery: Trevira Velvet, ref. Royal Blue, TRV07

Legs: Royal Blue gloss lacquer

Metal detail: Brushed Brass

BAR STOOL | DIMENSIONS

W: 51 cm | 20,1"

D: 51 cm | 20,1"

H: 106 cm | 41,7"

SH: 80 cm | 31,5"

COUNTER STOOL | DIMENSIONS

W: 51 cm | 20,1"

D: 51 cm | 20,1"

H: 96 cm | 37,8"

SH: 70 cm | 27,6"

Product options, fabrics and technical details on pages 260





BECOMES ME

BAR & COUNTER STOOL

The Becomes Me Bar Stool has an embracing silhouette and luxurious deep seat, its sensuous curves and comfortable back perfectly adapt to the body. The nails adorning the curves and back of the pieces provide a soothing feel to its lines. It is a truly feminine, soft and pleasant design that sets out to be like a second skin. Indeed, it becomes you.

AS PICTURED

Upholstery: Cotton Velvet, ref. Midnight Blue, CV17

Legs: Midnight blue gloss lacquer

Metal detail: Brushed brass

Nails: Plated Brass

BAR STOOL | DIMENSIONS

W: 53 cm | 20,9"

D: 50 cm | 19,7"

H: 105 cm | 41,3"

SH: 80 cm | 31,5"

AH: 82 cm | 32,3"

COUNTER STOOL | DIMENSIONS

W: 53 cm | 20,9"

D: 50 cm | 19,7"

H: 95 cm | 37,4"

SH: 70 cm | 27,6"

AH: 72 cm | 28,3"

Product options, fabrics and technical details on page 261





MELODY

BAR & COUNTER STOOL

Like a song that starts with a gentle melody, the front of this chair is composed as a verse, with a smooth seat, backrest and legs. The scene is set for the explosion of the chorus, bursting from its quilted back, infused with detailed seaming and exuberant curved lines. The Melody Bar & Counter Stool is made to entertain, between song and dance.

AS PICTURED

Upholstery: Cotton Velvet, ref. Mustard, CV 10

Legs: Mustard Gloss Lacquer

Metal detail: Brushed nickel

BAR STOOL | DIMENSIONS

W: 50 cm | 19,7"

D: 50 cm | 19,7"

H: 105 cm | 41,3"

SH: 80 cm | 31,5"

COUNTER STOOL | DIMENSIONS

W: 50 cm | 19,7"

D: 50 cm | 19,7"

H: 95 cm | 37,4"

SH: 70 cm | 27,6"

Product options, fabrics and technical details on pages 262





NEWMAN

BAR & COUNTER STOOL

Encapsulating the thrill of speed, the Newman is an elevated homage to the golden age of gentleman drivers. The piece's flawless structure is deceptively simple, yet undeniably striking. The detailed upholstery and seaming bears the mark of true craftsmanship. Its sensuous lines are enhanced by the immaculate metal touches. The Newman brews a tangible sense of movement to a bar setting.

AS PICTURED

Upholstery: Leather, ref. Cream, L02

Legs: Cream gloss lacquer

Metal detail: Brushed brass

BAR STOOL | DIMENSIONS

W: 40 cm | 15,7"

D: 50 cm | 19,7"

H: 102 cm | 40,2"

SH: 80 cm | 31,5"

COUNTER STOOL | DIMENSIONS

W: 40 cm | 15,7"

D: 50 cm | 19,7"

H: 92 cm | 36,2"

SH: 70 cm | 27,6"

Product options, fabrics and technical details on page 262 and 263





OLYMPIA

BAR & COUNTER STOOL

Olympia projects pure haute couture from this three-piece suite, with its sensuous feminine outline and voluptuous shape.

Each exquisitely curved design features detailed seaming to the front and reverse, surmounting either bold metal stands or exposed legs enclosed by a brass cirlet, creating the pièce de résistance for any interior.

AS PICTURED

Upholstery: Cotton Velvet, ref. Emerald, CV09

Ring: Brushed brass

Legs: Emerald gloss lacquer

BAR STOOL | DIMENSIONS

W: 58 cm | 22,8"

D: 55 cm | 21,7"

H: 100 cm | 39,4"

SH: 80 cm | 31,5"

COUNTER STOOL | DIMENSIONS

W: 58 cm | 22,8"

D: 55 cm | 21,7"

H: 90 cm | 35,4"

SH: 70 cm | 27,5"

Product options, fabrics and technical details on pages 263





FRINGES

BAR & COUNTER STOOL

Fringes draws on the signature Franjas fashion theme, ruffling the scene and inviting guests with its fun and flirtatious feel. The two fringes run along the front and reverse of the wide seat, set against a curved backrest that completes its classic appearance.

AS PICTURED

Upholstery: Cotton Velvet, ref. Steel Blue, CV27

Fringes: Pale Blue 49

Metal detail: Brushed Brass

Legs: Steel blue gloss lacquer

BAR STOOL | DIMENSIONS

W: 57 cm | 22,4"

D: 54 cm | 21,3"

H: 100 cm | 39,4"

SH: 80 cm | 31,5"

COUNTER STOOL | DIMENSIONS

W: 57 cm | 22,4"

D: 54 cm | 21,3"

H: 90 cm | 35,4"

SH: 70 cm | 27,5"

Product options, fabrics and technical details on page 264







IN BETWEEN STOOL

The In Between Stool is an edgy design that combines the geometric forms of a circle and a square. The plated brass nail head trim adds an alluring touch to the stool, enhancing its refined lines.

AS PICTURED

Upholstery: Cotton Velvet, ref. Blue Grey, CV07
Upholstery nails: Plated brass

DIMENSIONS

W: 40 cm | 15,7"

D: 40 cm | 15,7"

H: 50 cm | 19,7"

Product options, fabrics and technical details
on page 264



IN BETWEEN 140 BENCH

The In Between Stool is an edgy design that combines the geometric forms of a circle and a square. The plated brass nail head trim adds an alluring touch to the stool, enhancing its refined lines.

AS PICTURED

Upholstery: Silence Chenille, ref. Pale Green, SC04

Upholstery nails: Plated Nickel

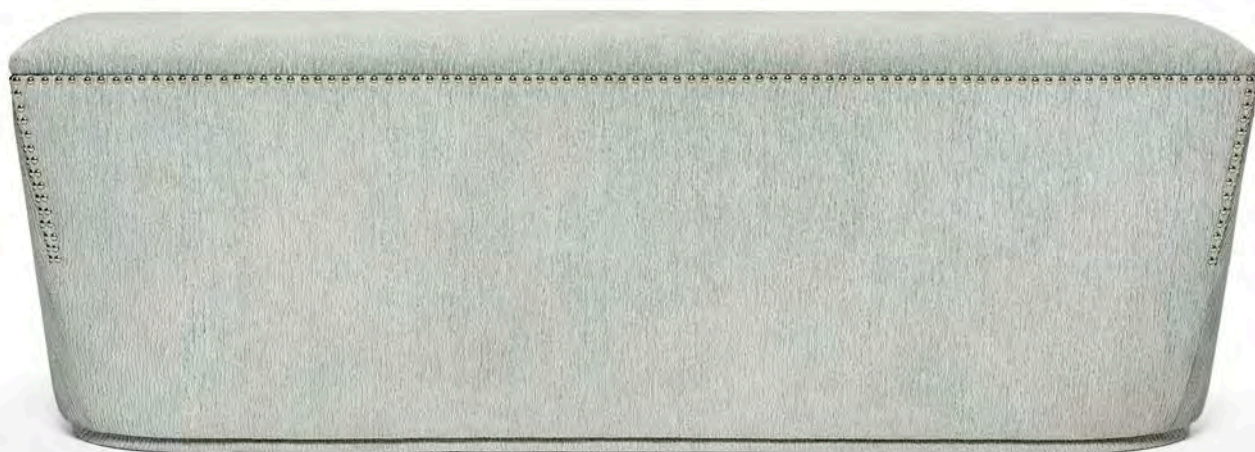
DIMENSIONS

W: 140 cm | 55,1"

D: 41 cm | 16,1"

H: 48 cm | 18,9"

Product options, fabrics and technical details
on page 265



CHAMOIS

STOOL

The effortless glamour of a powder room is revisited by the Chamois. Its graceful capitonné tufted sides and elegant cubic shape make it a lasting piece, fitted for any living space in need of a feminine touch.

AS PICTURED

Upholstery: Cotton Velvet, ref. Lilac, CV15
Footer: Lilac gloss lacquer

DIMENSIONS

W: 52 cm | 20,5"

D: 42 cm | 16,5"

H: 49 cm | 19,3"

Product options, fabrics and technical details
on page 265



FRINGES

50 & 110 STOOL

Fringes draws on the signature Franjas fashion theme, ruffling the scene and inviting guests with its fun and flirtatious feel. The two fringes run all around the piece, completing its classic appearance.

FRINGES 50 STOOL

AS PICTURED

Upholstery: Cotton Velvet, ref. Steel Blue, CV27
Fringes: Pale Blue 49

DIMENSIONS

W: 50 cm | 19,7"
D: 50 cm | 19,7"
H: 50 cm | 19,7"

FRINGES 110 STOOL

AS PICTURED

Upholstery: Cotton Velvet, ref. Desert, CV03
Fringes: Desert 04

DIMENSIONS

W: 110 cm | 43,3"
D: 110 cm | 43,3"
H: 50 cm | 19,7"

Product options, fabrics and technical details
on page 265 and 266



FRINGES

140 BENCH

Fringes draws on the signature Franjas fashion theme, ruffling the scene and inviting guests with its fun and flirtatious feel. The two fringes run all around the piece, completing its classic appearance.

AS PICTURED

Upholstery: Cotton Velvet, ref. Mustard, CV10

Fringes: Camel 117

DIMENSIONS

W: 140 cm | 55,1"

D: 50 cm | 19,7"

H: 50 cm | 19,7"

Product options, fabrics and technical details
on page 266



BELLE DE JOUR STOOL

The urge of glimpsing behind the curtain is captured by the Belle de Jour, a splendid piece that reckons mischief and playfulness to a living space. The lavish haute couture upholstery is embellished by plated brass nail head trim. Irresistible.

AS PICTURED

Upholstery: Cotton Velvet, ref. Mulberry, CV22

Upholstery nails: Plated nickel

DIMENSIONS

W: 43 cm | 16,9"

D: 43 cm | 16,9"

H: 50 cm | 19,7"

Product options, fabrics and technical details
on page 266



MELLOW

50 & 70 STOOL

Blending Mid-century Modern and Art Deco, the Mellow features an organic silhouette, with intricate vertical pipping. It is a piece of haute couture for a living space.

MELLOW 50 STOOL

AS PICTURED UPHOLSTERY:
Cotton Velvet, ref. Mustard, CV10

DIMENSIONS
W: 50 cm | 19,7"
D: 50 cm | 19,7"
H: 50 cm | 19,7"

MELLOW 70 STOOL

AS PICTURED UPHOLSTERY:
Cotton Velvet, ref. Antique
Pink, CV28

DIMENSIONS
W: 70cm | 27,6"
D: 70 cm | 27,6"
H: 50 cm | 19,7"

Product options, fabrics and technical details
on page 267



MELLOW

140 BENCH

Blending Mid-century Modern and Art Deco, the Mellow features an organic silhouette, with intricate vertical pipping. It is a piece of haute couture for a living space.

AS PICTURED

Upholstery: Cotton Velvet, ref. Green Duck Egg, CV19

DIMENSIONS

W: 140 cm | 55,1"

D: 50 cm | 19,7"

H: 53 cm | 20,9"

Product options, fabrics and technical details
on page 267



JEANE STOOL

The Jeane stool is a graceful diamond shaped piece with a voluptuous and unique and evocative hexagon cut-like design, and a thinned polished brass plate waistline. Diamonds are forever and so is the Jeane, a lasting piece suited for any living space.

AS PICTURED

Upholstery: Leather, ref. Cream, L02

Ring: Polished brass

DIMENSIONS

W: 53 cm | 20,9"

D: 53 cm | 20,9"

H: 45 cm | 17,7"

Product options, fabrics and technical details
on page 268



AVA STOOL

The Ava is an ode to the silhouette of the femmes fatales of the iconic film-noir era. Its shapely base is upholstered with exquisite detailed seaming, and the top is a handcrafted brass crown. The Ava is a soothing addition to a living space in need of a sensuous touch.

AS PICTURED

Upholstery: Trevira Velvet, ref. Black, TRV04

Top: Brushed brass

DIMENSIONS

W: 45 cm | 17,7"

D: 45 cm | 17,7"

H: 52 cm | 20,5"

Product options, fabrics and technical details
on page 268



MISS FEET STOOL

The Miss Feet Stool has ageless appeal. The handcrafted deep diamond button tufting and the sumptuous upholstery reveal an expert touch. The ideal piece for a playful and remarkably feminine look.

AS PICTURED

Upholstery: Leather, ref. Black,
L06

DIMENSIONS

W: 49 cm | 19,3"

D: 49 cm | 19,3"

H: 47 cm | 18,5"

Product options, fabrics and technical details
on page 268



MISS FEET COFFEE TABLE

The Miss Feet Coffee Table has ageless appeal. The handcrafted deep diamond button tufting and the sumptuous upholstery reveal an expert touch. The ideal piece for a playful and remarkably feminine look.

AS PICTURED

Upholstery: Leather, ref. Black, L06

Top: Black lacquered glass

COFFEE TABLE 40

DIMENSIONS

W: 50 cm | 19,7"

D: 50 cm | 19,7"

Ht: 49 cm | 19,3"

COFFEE TABLE 60

DIMENSIONS

W: 67 cm | 26,4"

D: 67 cm | 26,4"

H: 49 cm | 19,3"

Product options, fabrics and technical details
on page 269



FOLDING SCREENS



EMPIRE

FOLDING SCREEN

Drawing inspiration from Art Deco and early twentieth century architecture, the Empire's patterns created by the gold leaf and the sumptuous upholstery texture fashion a dazzling tridimensional sculpture, a visual metaphor for a cityscape. More than a folding screen, a state of mind.

AS PICTURED

Upholstery: Cotton Velvet, ref. Steel Blue, CV27

Wood panels: Gold Leaf with gloss finish

Metal details: Polished brass

DIMENSIONS

W: 212 cm | 83,5"

D: 5 cm | 2"

H: 201 cm | 79,1"

Product options, fabrics and technical details
on page 269





LET'S PLAY FOLDING SCREEN

The Let's Play folding screen brings the thrill of a game night to a living space. The Backgammon inspired piece has suspenseful geometric panels that contrast with the plain surface on the back side. The sequence of metal hues on the edges and hinges enhance its abstract forms. A scene stealer set to divide and conquer.

AS PICTURED

Upholstery: Wild Silk, Section A ref. Silver, WS07;
Section B ref. Bronze, WS02; Sections C and D ref.
Honey, WS05
Metal details: Polished brass

DIMENSIONS

W: 195 cm | 76,8"

D: 8 cm | 3,1"

H: 200 cm | 78,7"

Product options, fabrics and technical details
on page 270





HIDE & SEEK

FOLDING SCREEN 3 & 4 PANELS

The Hide & Seek folding screen is a stylish piece that features beautiful brass plated nail head trim, stud detailing and tailor-like pleating. A remarkable design that can enhance a plethora of living spaces.

AS PICTURED

Upholstery: Cotton Satin, ref. Teal, CTS08

Upholstery nails: Plated brass

Metal details: Polished Brass

FOLDING SCREEN 3 PANELS

DIMENSIONS

W: 156 cm | 61,4"

D: 4 cm | 1,6"

H: 101 cm | 39,8"

FOLDING SCREEN 4 PANELS

DIMENSIONS

W: 199 cm | 78,3"

D: 4 cm | 1,6"

H: 200 cm | 78,7"

Product options, fabrics and technical details
on page 270





GOLDEN EYE FOLDING SCREEN

Golden Eye features a sleek interplay between its panels and windows, ensuring a presence that will divide and conquer any living space. A bold brass border encloses the three moveable panels, which host orientated geometrically designed windows accented with metal detailing.

AS PICTURED

Upholstery: Cotton Velvet, ref. Pure White CV01

Metal details: Brushed brass

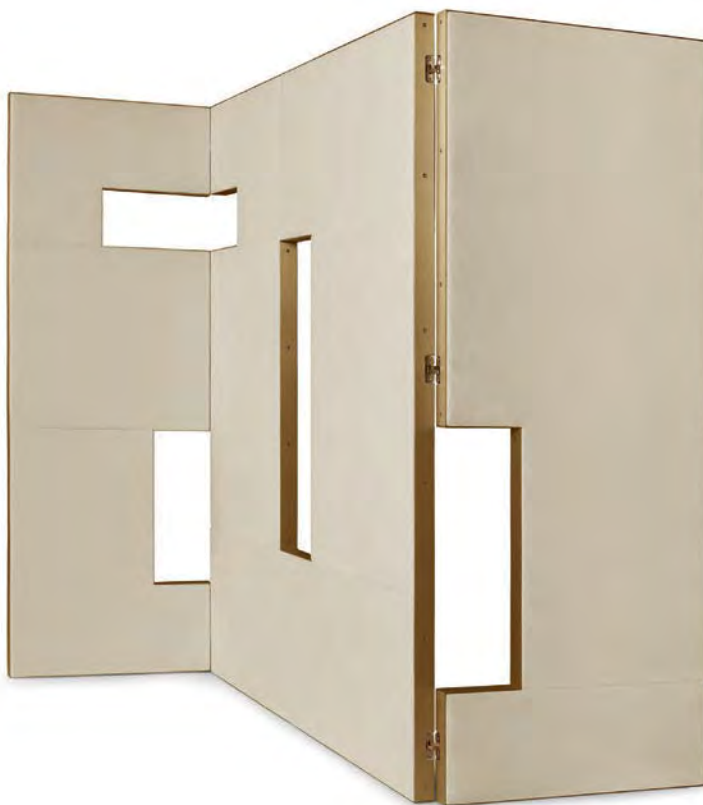
DIMENSIONS

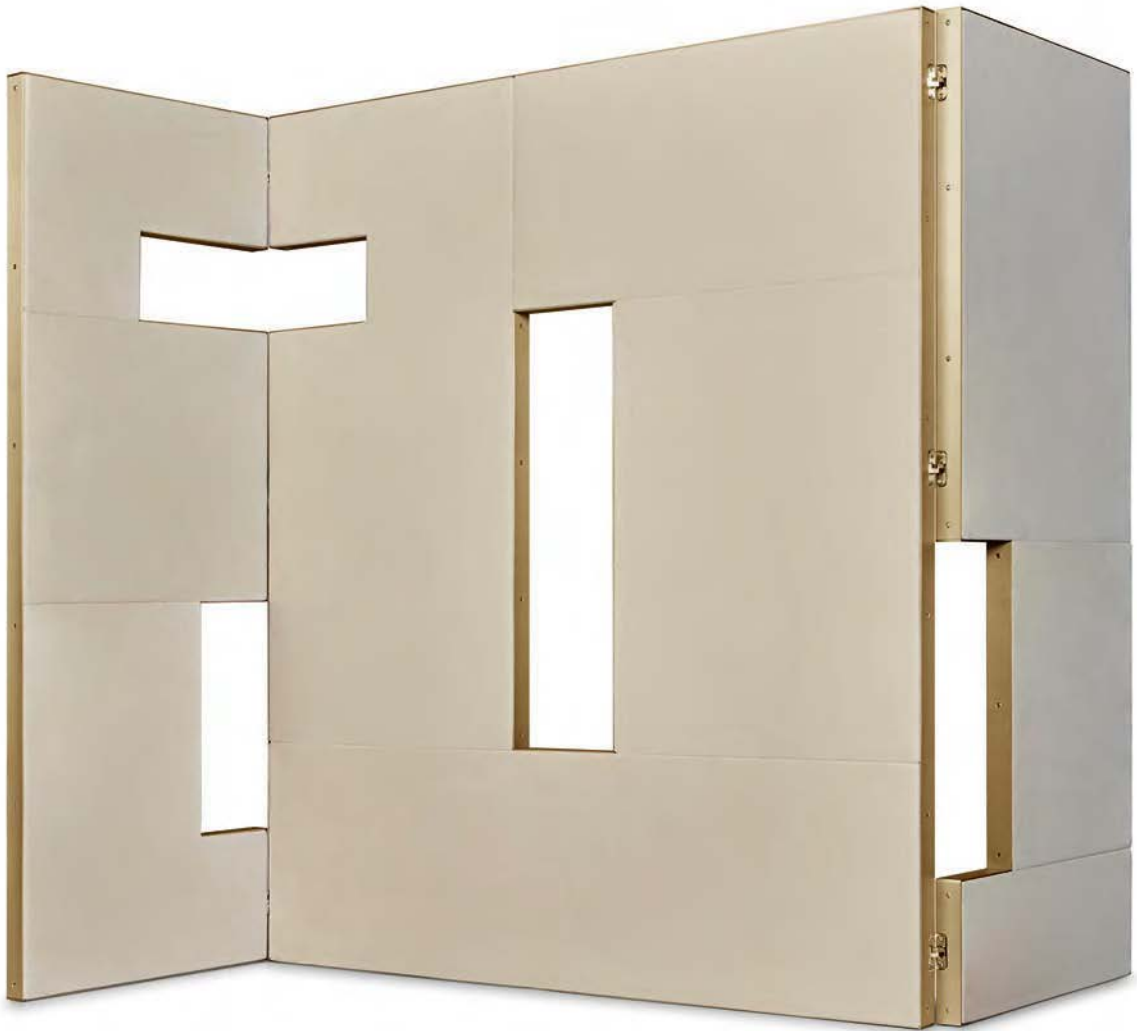
W: 236 cm | 92,9"

D: 5 cm | 2"

H: 147 cm | 57,9"

Product options, fabrics and technical details on page 271







JOSEPHINE

M BED

Golden Eye features a sleek interplay between its panels and windows, ensuring a presence that will divide and conquer any living space. A bold brass border encloses the three moveable panels, which host orientated geometrically designed windows accented with metal detailing.

AS PICTURED

Headboard upholstery: Cotton Velvet, ref Desert, Cv03

Headboard pipping: Wild silk, ref. Silver, WS07

Bed Frame: Cotton Velvet, ref. Desert, Cv03

DIMENSIONS

W: 260 cm | 102,4"

D: 226 cm | 88,9"

H: 140 cm | 55,1"

FITS MATTRESS

W: 180 cm | 70,8"

D: 200 cm | 78,7"

H: Variable

Available in other mattresses sizes.

Product options, fabrics and technical details on page 271



Decorative pillows available. Mattress, pillows and bed textiles not included.



JOSEPHINE

L BED

Channeling the aesthetic of the Art Deco movement, the Josephine Bed features a wonderfully elegant fan-shaped motif, with its accentuated curvy lines with decadent and lavish finish. The feminine curves are ravishingly enhanced by the pipping. This fully upholstered bed is made for dreaming.

AS PICTURED

Headboard upholstery: Nubuck, ref. Desert, NB01
Headboard pipping: Cotton Velvet, ref. Pure White, CV01
Bed Frame: Nubuck, ref. Desert, NB01

DIMENSIONS

W: 450 cm | 177,2"
D: 226 cm | 88,9"
H: 140 cm | 55,1"

FITS MATTRESS

W: 200 cm | 78,7"
D: 200 cm | 78,7"
H: Variable

Available in other mattresses sizes.

Product options, fabrics and technical details on page 271



Decorative pillows available. Mattress, pillows and bed textiles not included.



DAISY M BED

The Daisy redefines the need for curves in an interior. As playful as it is graceful, its superbly detailed segments in the front and reverse provide a plateau for sleeping and dreaming. An absolute must for a bedroom with a sense of fun.

AS PICTURED

Headboard upholstery: Cotton Velvet, ref Lilac, Cv15
Bed Frame: Cotton Velvet, ref Lilac, Cv15

DIMENSIONS

W: 240 cm | 94,5"
D: 230 cm | 90,5"
H: 130 cm | 51,2"

FITS MATTRESS

W: 180 cm | 70,9"
D: 200 cm | 78,7"
H: Variable

Available in other mattresses sizes.

Product options, fabrics and technical details on page 272



Decorative pillows available. Mattress, pillows and bed textiles not included.



LET'S PLAY

M BED

The Let's Play Bed brings the thrill of a game night to a bedroom. The backgammon inspired piece has suspenseful geometric panels, and the edges are foldable. Roll the dice and make your move.

AS PICTURED

Upholstery: Cotton Velvet, ref steel blue, Cv27

DIMENSIONS

W: 340 cm | 134"
D: 220 cm | 86,7"
H: 160 cm | 63"

FITS MATTRESS

W 180 cm | 70,9"
D: 200 cm | 78,7"
H: Variable

Available in other mattresses sizes.

Product options, fabrics and technical details on page 272



Decorative pillows available. Mattress, pillows and bed textiles not included.



COTTON VELVET

MARTINDALE 40.000 | COMPOSITION 100% CO



PURE WHITE
CV01



PALE PINK
CV02



DESERT
CV03



CAMEL
CV04



CHOCOLATE
CV05



BLACK
CV06



BLUE GREY
CV07



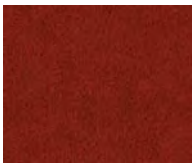
TEAL
CV08



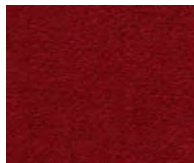
EMERALD
CV09



MUSTARD
CV10



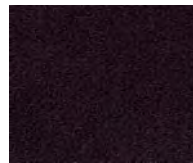
TANGERINE TANGO
CV11



RED CASINO
CV12



PURPLE
CV13



VIOLET
CV14



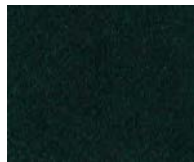
LILAC
CV15



LIGHT GREY
CV16



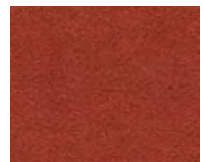
MIDNIGHT BLUE
CV17



BRUNSWICK GREEN
CV18



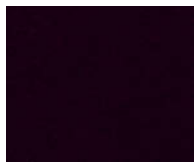
GREEN DUCK EGG
CV19



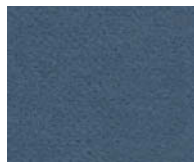
PEACH
CV20



FUCHSIA
CV21



MULBERRY
CV22



SKY
CV23



LIME
CV24



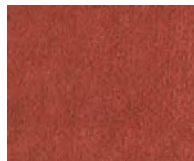
BASALT
CV25



PALE GREEN
CV26



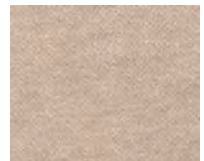
STEEL BLUE
CV27



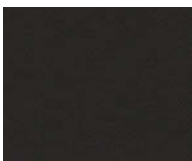
ANTIQUÉ PINK
CV28



MILKSHAKE PINK
CV29



WARM GREY
CV30



ANTRACITE
CV31

COTTON SATIN

MARTINDALE 100.000 | COMPOSITION 3% CO + 97% PL



DESERT
CST01



SILVER
CST02



DARK GREY
CST03



BLACK
CST04



CHOCOLATE
CST05



RUBY
CST06



COPPER
CST07



ROSE
CST08



VIOLET
CST09

WILD SILK

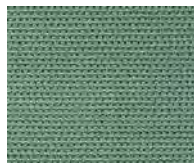
MARTINDALE 25.000 | COMPOSITION 90% VI + 10% SI



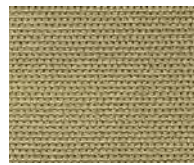
MAGNOLIA
WS01



BRONZE
WS02



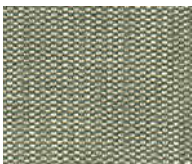
AQUAMARINE
WS04



HONEY
WS05



CORAL
WS06



SILVER
WS07



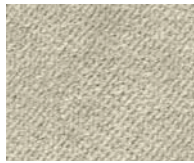
ANTRACITE
WS08

TREVIRA VELVET

MARTINDALE 50.000 | COMPOSITION 100% TREVIRA



MAGNOLIA
TRV01



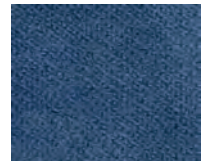
DESERT
TRV02



CHOCOLATE
TRV03



BLACK
TRV04



STEEL BLUE
TRV05



MIDNIGHT BLUE
TRV06



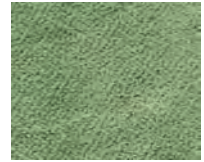
ROYAL BLUE
TRV07



TEAL
TRV08



SKY
TRV09



MOSS
TRV10



EMERALD
TRV11



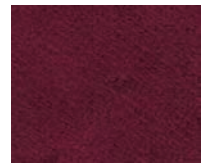
LIME
TRV12



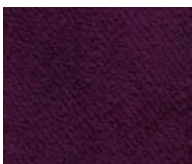
CAMEL
TRV13



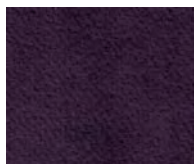
RED CASINO
TRV14



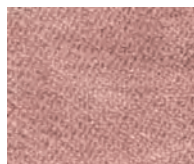
DARK RED
TRV15



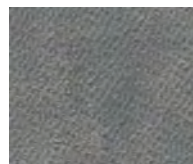
MULBERRY
TRV16



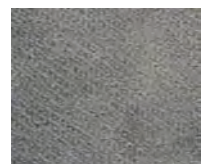
PURPLE
TRV17



PALE PINK
TRV18



LIGHT GREY
TRV19



ANTRACITE
TRV20

BOUCIÉ WOOL

MARTINDALE 40.000 | COMPOSITION 42% WO | 33% CV | 24% CO | 1% PA



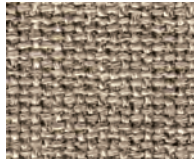
SNOW
BW01

TWILL FR

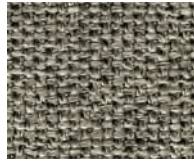
MARTINDALE 70.000 | COMPOSITION 53,7% AC + 46,3% PL



MAGNOLIA
TFR01



DESERT
TFR02



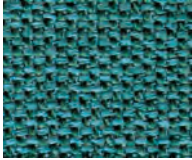
TAUPE
TFR03



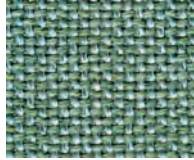
CHOCOLATE
TFR04



BLACK
TFR05



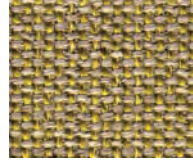
TEAL
TFR06



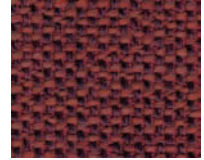
SKY
TFR07



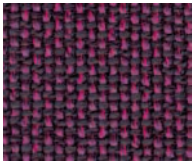
MOSS
TFR08



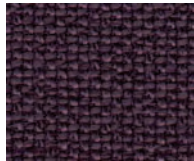
LIME
TFR09



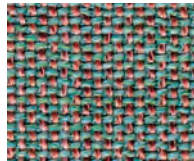
POPPY
TFR10



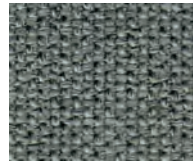
RASPBERRY
TFR11



PURPLE
TFR12



LILAC GREEN
TFR13



SILVER
TFR14

FANTASY FUR - SYNTHETIC FUR

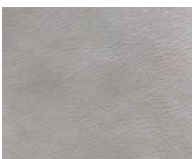
COMPOSITION 100% MA



CREAM
FF01

NUBUCK

MARTINDALE 50.000 | COMPOSITION 100% LEATHER



MILK
CL01

LEATHER

MARTINDALE 50.000 | COMPOSITION 100% LEATHER



MILK
L01



CREAM
L02



STONE
L03



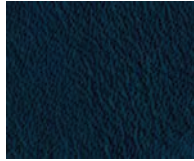
CAMEL
L04



CHOCOLATE
L05



BLACK
L06



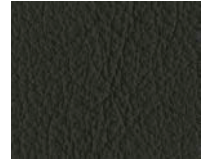
BLUE
L07



DARK RUBY
L08



BURGUNDY
L09



ASPHALT
L10



HAZELNUT
L11



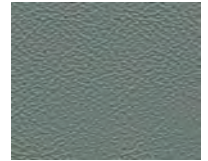
ARGIL
L12



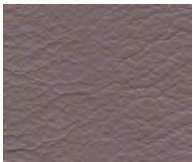
BRUNSWICK GREEN
L13



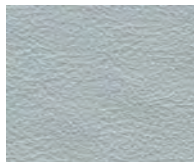
PALE PINK
L14



PALE GREEN
L15



LAVENDER
L16



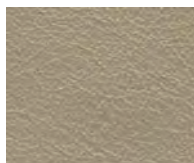
LIGHT GREY
L17

CLASSIC LEATHER

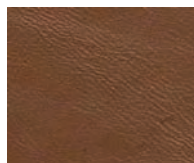
MARTINDALE 50.000 | COMPOSITION 100% LEATHER



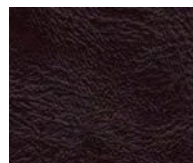
MILK
CL01



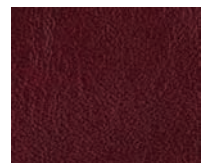
CREAM
CL02



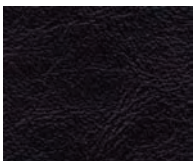
SAND
CL03



MAHOGANY
CL04



DARK RUBY
CL05



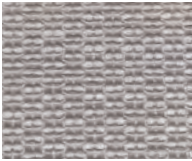
BURGUNDY
CL06



BLACK
CL07

HONEY CHENILLE

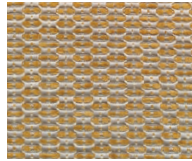
MARTINDALE 50.000 | COMPOSITION 54% CO + 25% PL + 21% VI



MAGNOLIA
HC01



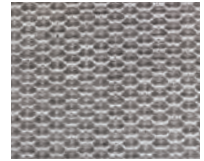
MILKSHAKE PINK
HC02



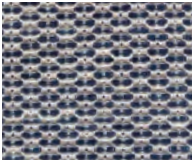
MUSTARD
HC03



PALE GREEN
HC04



ANTRACITE
HC05



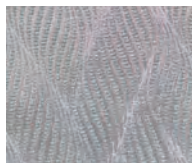
BLUE GREY
HC06

FREQUENCY CHENILLE

MARTINDALE 50.000 | COMPOSITION 46% VI + 29% CO + 25% PL



MILKSHAKE PINK
FC01



PALE GREEN
FC02



LIGHT GREY
FC03

SILENCE CHENILLE

MARTINDALE 50.000 | COMPOSITION 46% VO + 35%CO + 19%PL



MAGNOLIA
SC01



MILKSHAKE PINK
SC02



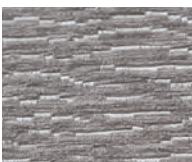
MUSTARD
SC03



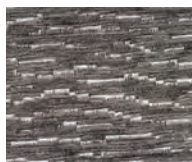
PALE GREEN
SC04



MIDNIGHT BLUE
SC05



LIGHT GREY
SC06



ANTRACITE
SC07

FRINGES

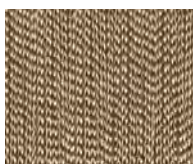
COMPOSITION VISCOSE RAYON - 97% WOOD CELLULOSE 3% PIGMENT



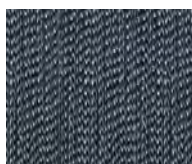
PURE WHITE 00
CTS 01



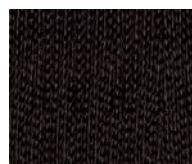
MAGNOLIA 02
CV01



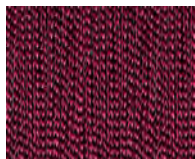
DESERT 04
CV02·CV03·CV30·
TRV01·TRV02



ANTRACITE 07
CV25·CV31·
TRV19·TRV20



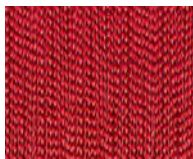
CHOCOLATE 10
CV05·TRV03·CTS05



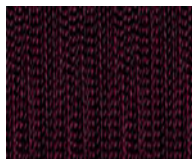
DARK PINK 16
CV21



ANTIQUÉ PINK 18
CV28



RED CASINO 22
CV12·TRV14



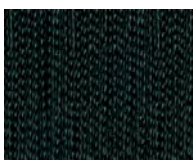
DARK RED 23
CV22·TRV15·TRV16



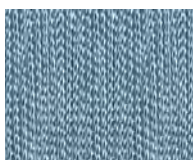
DARK BROWN 25
CV14



GREEN DUCK EGG 26
CV19·TRV10



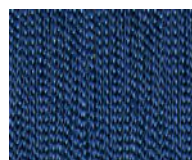
BRUNSWICK GREEN 29
CV18



LIGHT BLUE 31
TRV09



SKY 32
CV23



ROYAL BLUE 33
TRV07



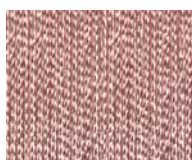
MIDNIGHT BLUE 34
CV07·CV13·CV17·
TRV06



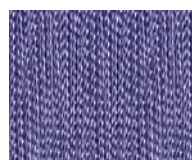
PURPLE 37
TRV17·CTS09



LIME 40
CV24



PALE PINK 41
CV29·TRV18



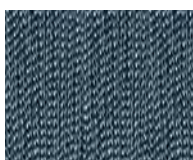
LILAC 45
CV15



PEACH 46
CV11·CV20



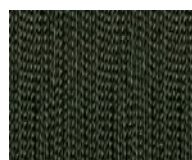
LIGHT GREY 48
CV16



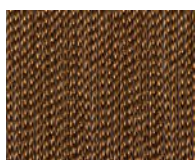
PALE BLUE 49
CV26·CTS03



BLACK 50
CV06·TRV04·
CTS06·CTS07



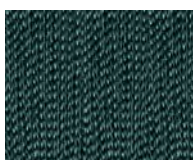
EMERALD 102
CV09·TRV11



CAMEL 117
CV04·CV10·TRV13



HONEY 304
TRV12



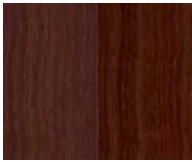
TEAL 321
CV08·CV27·
TRV08·CTS08



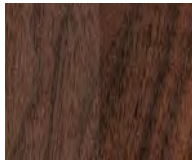
STEEL BLUE 322
TRV05

LEG FINISHINGS

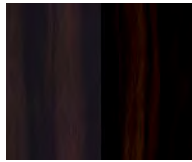
WOOD VENEERS WITH MATT OR GLOSS VARNISH



ROSEWOOD



WALNUT

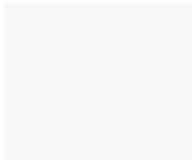


EBONY



WENGÉ STAIN

LACQUER FINISHING | AVAILABE IN ALL RAL RANGE COLOURS | MATT OR GLOSS FINISHING



WHITE

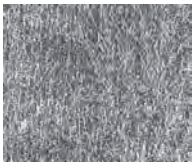


RED CASINO



BLACK

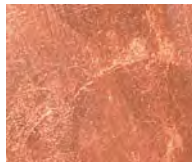
SPECIAL FINISHINGS - METALLIC LEAVES WITH MATT OR GLOSS VARNISH



SILVER LEAF

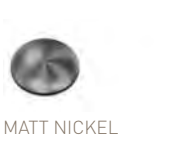


GOLD LEAF

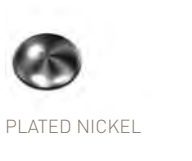


COPPER LEAF

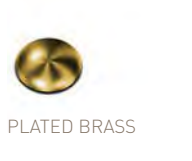
UPHOLSTERY NAILS



MATT NICKEL



PLATED NICKEL



PLATED BRASS



BRONZE RENAISSANCE



OLD GOLD SPECKLED

METAL PLATES



BRASS
POLISHED / BRUSHED

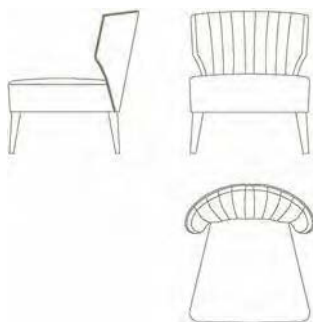


NICKEL
POLISHED / BRUSHED



COPPER
POLISHED / BRUSHED

LIPSTICK - ARMCHAIR



PRODUCTOPTIONS

This model is made with pipping in the silhouette. Available in all Munna fabrics, and available in client's own material. Upholstery nails are optional:

- a) Piping
- b) Piping and Upholstery nails [silhouette]

UPHOLSTERY

Available in all Munna fabrics except Wild Silk. Available in client's own material.

LEG FINISHES

Available upholstered, Rosewood, Ebony or Walnut veneer, Wengé stain or lacquer in all RAL colours, in matt or glass.

UPHOLSTERYNAILS

Matt or plated nickel, plated brass, bronze renaissance or old gold speckled.

FINISHES AVAILABLE ONREQUEST

Legs: Gold, Silver or Copper leaf.

DIMENSIONS

W: 65 cm 125,6"
D: 73 cm 128,7"
H: 80 cm 131,5"
SH: 42 cm 116,5"

WEIGHT

15 kg 133 lbs
20 kg 144 lbs [packed]

COMREQUIREMENTS

FABRIC

3,50 mts 1138"
Based on plain fabric, standard width 1,40 mts 155"

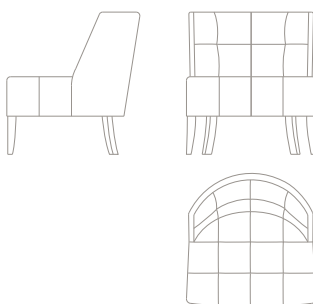
LEATHER

60 square feet

VOLUME

0,50 m³ 17,7 cubic feet
[packed]

CAPRICE - ARMCHAIR



PRODUCTOPTIONS

This model is made with pipping in the silhouette. Available in all Munna fabrics, and available in client's own material. Upholstery nails are optional:

- a) Piping
- b) Piping and Upholstery nails [silhouette]

UPHOLSTERY

Available in all Munna fabrics except Wild Silk. Available in client's own material.

LEG FINISHES

Available upholstered, Rosewood, Ebony or Walnut veneer, Wengé stain or lacquer in all RAL colours, in matt or glass.

UPHOLSTERYNAILS

Matt or plated nickel, plated brass, bronze renaissance or old gold speckled.

FINISHES AVAILABLE ONREQUEST

Legs: Gold, Silver or Copper leaf.

DIMENSIONS

W: 70 cm 127,6"
D: 72 cm 128,3"
H: 77 cm 130,3"
SH: 42 cm 116,5"

WEIGHT

14 kg 131 lbs
21 kg 146 lbs [packed]

COMREQUIREMENTS

FABRIC

3,00 mts 1119"
Based on plain fabric, standard width 1,40 mts 155"

LEATHER

55 square feet

VOLUME

0,55 m³ 19,4 cubic feet
[packed]

BABE · ARMCHAIR

COM REQUIREMENTS

FABRIC

4 mts | 158"
Based on plain fabric,
standard width 1,40 mts | 55"

LEATHER

70 Square feet

PRODUCT OPTIONS

UPHOLSTERY

Available in all Munna fabrics except Wild Silk.
Available in client's own material.

LEG FINISHES

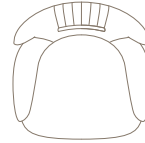
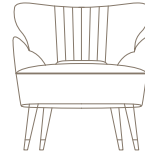
Available upholstered, Rosewood or Ebony veneer, solid Walnut,
Wengé stain or lacquer in all RAL colours, in matt or gloss.

FEET COVERS

Brass, Nickel or Copper in Polished or Brushed finishing.

FINISHES AVAILABLE ON REQUEST

Legs: Gold, Silver or Copper leaf.



VOLUME

0,52 m3 | 18,3 cubic feet
(packed)

WEIGHT

15 kg | 33 lbs
22 kg | 49 lbs (packed)

DIMENSIONS

W: 69 cm | 27,2"
D: 69 cm | 27,2"
H: 74 cm | 29,1"
SH: 44 cm | 17,3"
AH: 58 cm | 22,8"

FEMINA · ARMCHAIR

COM REQUIREMENTS

FABRIC

2,50 mts | 98"
Based on plain fabric,
standard width 1,40 mts | 55"

LEATHER

40 square feet

PRODUCT OPTIONS

UPHOLSTERY

Available in all Munna fabrics except Wild Silk.
Available in client's own material.

LEG FINISHES

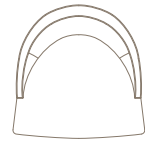
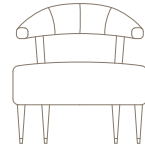
Available upholstered, Rosewood, Ebony or Walnut veneer,
Wengé stain or lacquer in all RAL colours, in matt or gloss.

FEET COVERS

Brass, Nickel or Copper in Polished or Brushed finishing.

FINISHES AVAILABLE ON REQUEST

Legs: Gold, Silver or Copper leaf.



VOLUME

0,52 m³ | 18,4 cubic feet
(Packed)

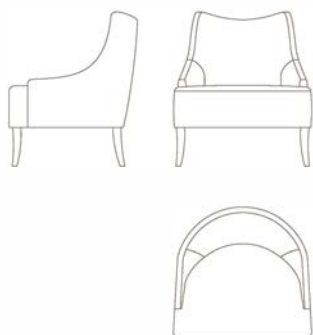
WEIGHT

11 kg | 24,5 lbs
20 kg | 44 lbs (packed)

DIMENSIONS

W: 70 cm | 27,6"
D: 71 cm | 27,9"
H: 72 cm | 28,3"
SH: 44 cm | 17,3"
AH: 60 cm | 23,6"

BECOMES ME · ARMCHAIR



PRODUCT OPTIONS

This model is made with pipping in the silhouette. Available in all Munna fabrics, and available in client's own material. Upholstery nails are optional:

- a) Piping
- b) Upholstery nails (silhouette)
- c) Upholstery nails (silhouette and back)

UPHOLSTERY

Available in all Munna fabrics except Wild Silk. Available in client's own material.

LEG FINISHES

Available upholstered, Rosewood, Ebony or Walnut veneer, Wengé stain or lacquer in all RAL colours, in matt or gloss.

UPHOLSTERY NAILS

Matt or plated nickel, plated brass, bronze renaissance or old gold speckled.

FINISHES AVAILABLE ON REQUEST

Legs: Gold, Silver or Copper leaf.

DIMENSIONS

W: 75 cm | 29,5"
D: 75 cm | 29,5"
H: 82 cm | 32,3"
SH: 43 cm | 16,9"
AH: 49 cm | 19,3"

WEIGHT

16 kg | 35 lbs
22 kg | 49 lbs (packed)

COM REQUIREMENTS

FABRIC

4,5 mts | 177"
Based on plain fabric, standard width 1,40 mts | 55"

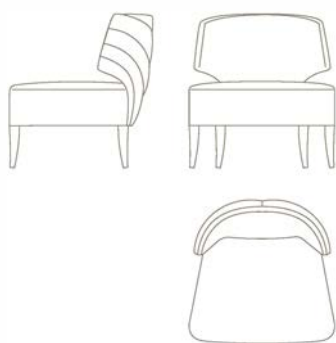
LEATHER

80 square feet

VOLUME

0,63 m³ | 22,2 cubic feet
(packed)

MELODY · ARMCHAIR



PRODUCT OPTIONS

UPHOLSTERY

Available in all Munna fabrics except Wild Silk. Available in client's own material.

LEG FINISHES

Available in Upholstery, Rosewood, Ebony or Walnut veneer, Wengé stain or lacquer in all RAL colours, in matt or gloss.

FINISHES AVAILABLE ON REQUEST

Legs: Gold, Silver or Copper leaf.

DIMENSIONS

W: 76 cm | 30"
D: 75 cm | 29,5"
H: 80 cm | 31,5"
SH: 45 cm | 17,7"

WEIGHT

21 kg | 46,3 lbs
30 kg | 66,1 lbs (packed)

COM REQUIREMENTS

FABRIC

3,50 mts | 137,8"
Based on plain fabric, standard width 1,40 mts | 55"

LEATHER

60 square feet

VOLUME

0,61 m³ | 21,5 cubic feet
(packed)

MELODY-SWIVELARMCHAIR

COM REQUIREMENTS

FABRIC

3,5 mts | 137,8"
Based on plain fabric,
standard width 1,40 mts | 55"

LEATHER

60 Square feet

VOLUME

0,59 m³ | 20,8 cubic feet
[packed]

PRODUCT OPTIONS

UPHOLSTERY

Available in all Munna fabrics except Wild Silk.
Available in client's own material.

FOOTER FINISHES

Available upholstered, Rosewood, Ebony or Walnut
veneer, Wenge stain or lacquer in all RAL colours, in
matt or gloss.

FINISHES AVAILABLE ON REQUEST

Legs: Gold, Silver or Copper Leaf.



WEIGHT

25 kg | 55,1 lbs
31 kg | 68,3 lbs [packed]

DIMENSIONS

W: 70 cm | 27,6"
D: 76 cm | 30"
H: 82 cm | 32,3"
SH: 42 cm | 16,5"

AILEEN· ARMCHAIR

COM REQUIREMENTS

FABRIC

3,50 mts | 137,8"
Based on plain fabric,
standard width 1,40 mts | 55"

LEATHER

55 square feet

VOLUME

0,72 m³ | 25,4 cubic feet
[packed]

PRODUCT OPTIONS

UPHOLSTERY

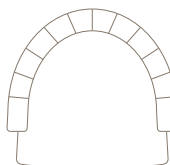
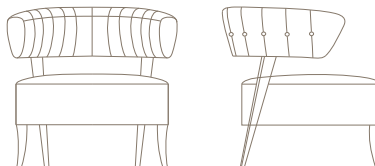
Available in all Munna fabrics except Wild Silk.
Available in client's own material.

LEG FINISHES

Available upholstered, Rosewood, Ebony or Walnut veneer,
Wenge stain or lacquer in all RAL colours, in matt or gloss.

FINISHES AVAILABLE ON REQUEST

Legs: Gold, Silver or Copper leaf.



WEIGHT

17 kg | 37,5 lbs
25 kg | 55 lbs [packed]

DIMENSIONS

W: 82 cm | 32,3"
D: 78 cm | 30,7"
H: 79 cm | 31,1"
SH: 46 cm | 18,1"

MONSIEUR T · ARMCHAIR



PRODUCT OPTIONS

This model is made with piping in the silhouette. Available in all Munna fabrics, and available in client's own material.

Upholstery nails are optional:

- a) Piping
- b) Piping and Upholstery nails (silhouette)

UPHOLSTERY

Available in all Munna fabrics except Wild Silk.

Available in client's own material.

LEG FINISHES

Available upholstered, Rosewood, Ebony or Walnut veneer, Wengé stain or lacquer in all RAL colours, in matt or gloss.

UPHOLSTERY NAILS

Matt or plated nickel, plated brass, bronze renaissance or old gold speckled.

FINISHES AVAILABLE ON REQUEST

Legs: Gold, Silver or Copper leaf.

DIMENSIONS

W: 78 cm | 30,7"

D: 78 cm | 30,7"

H: 80 cm | 31,5"

SH: 43 cm | 16,9"

AH: 45 cm | 17,7"

WEIGHT

24 kg | 53 lbs

30 kg | 66 lbs (packed)

COM REQUIREMENTS

FABRIC

4,00 mts | 158"

Based on plain fabric, standard width 1,40 mts | 55"

LEATHER

70 square feet

VOLUME

0,69 m³ | 24,4 cubic feet (packed)

MONSIEUR T · OTTOMAN



PRODUCT OPTIONS

UPHOLSTERY

Available in all Munna fabrics except Wild Silk.

Available in client's own material.

LEG FINISHES

Available upholstered, Rosewood, Ebony or Walnut veneer, Wengé stain or lacquer in all RAL colours, in matt or gloss.

UPHOLSTERY NAILS

Matt or plated nickel, plated brass, bronze renaissance or old gold speckled.

FINISHES AVAILABLE ON REQUEST

Legs: Gold, Silver or Copper leaf.

DIMENSIONS

W: 65 cm | 25,6"

D: 52 cm | 20,5"

H: 46 cm | 18,1"

WEIGHT

12 kg | 27 lbs

18 kg | 40 lbs (packed)

COM REQUIREMENTS

FABRIC:

1,50 mts | 59"

Based on plain fabric, standard width 1,40 mts | 55"

LEATHER:

30 square feet

VOLUME

0,23 m³ | 8,1 cubic feet

POLAIRE · ARMCHAIR

COM REQUIREMENTS

FABRIC

3,5 mts | 138"
Based on plain fabric,
standard width 1,40 mts | 55"

LEATHER

60 square feet

VOLUME

0,49 m³ | 17,3 cubic feet
(packed)

WEIGHT

15 kg | 33 lbs
20 kg | 44 lbs (packed)

PRODUCT OPTIONS

UPHOLSTERY

Available in all Munna fabrics except Wild Silk.
Available in client's own material.

LEG FINISHES

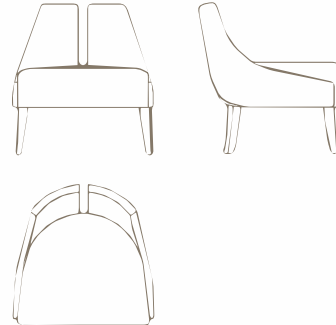
Available upholstered, Rosewood, Ebony or Walnut veneer,
Wengé stain or lacquer in all RAL colours, in matt or gloss.

FINISHES AVAILABLE ON REQUEST

Legs: Gold, Silver or Copper leaf.

DIMENSIONS

W: 70 cm | 27,6"
D: 70 cm | 27,6"
H: 78 cm | 30,7"
SH: 43 cm | 16,9"



NEWMAN · ARMCHAIR

COM REQUIREMENTS

FABRIC

5,5 mt | 216"
Based on plain fabric,
standard width 1,40 mts | 55"

LEATHER

90 square feet

VOLUME

0,66 m³ | 23,3 cubic feet
(packed)

WEIGHT

29 kg | 63,9 lbs
37 kg | 81,5 lbs (packed)

PRODUCT OPTIONS

UPHOLSTERY

Available in all Munna fabrics except Wild Silk.
Available in client's own material.

FOOTER FINISHES

Brass, Nickel or Copper in Polished or Brushed finishing;
Rosewood, Ebony or Walnut veneer, Wengé stain or
lacquer in all RAL colours, in matt or gloss.

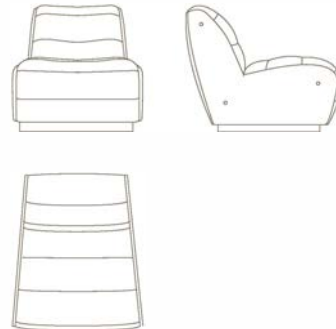
Metal details: Brass, Nickel or copper
in polished or brushed.

FINISHES AVAILABLE ON REQUEST

Legs: Gold, Silver or Copper leaf.

DIMENSIONS

W: 78 cm | 30,7"
D: 93 cm | 36,6"
H: 75 cm | 29,5"
SH: 43 cm | 16,9"



NEWMAN · OTTOMAN

COM REQUIREMENTS

FABRIC

3 mt | 118"
Based on plain fabric,
standard width 1,40 mts | 55"

LEATHER

50 square feet

VOLUME

0,33 m³ | 11,7 cubic feet
(packed)

WEIGHT

23 kg | 50,7 lbs
35 kg | 77,2 lbs (packed)

PRODUCT OPTIONS

UPHOLSTERY

Available in all Munna fabrics except Wild Silk.
Available in client's own material.

FOOTER FINISHES

Brass, Nickel or Copper in Polished or Brushed finishing;
Rosewood, Ebony or Walnut veneer, Wengé stain or
lacquer in all RAL colours, in matt or gloss.

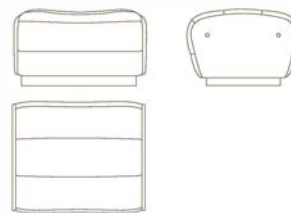
Metal details: Brass, Nickel or copper
in polished or brushed.

FINISHES AVAILABLE ON REQUEST

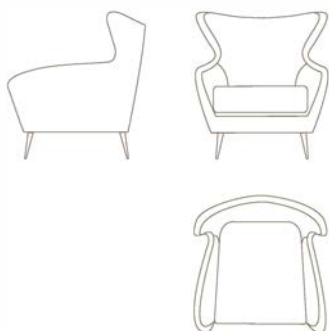
Legs: Gold, Silver or Copper leaf.

DIMENSIONS

W: 75 cm | 29,5"
D: 63 cm | 24,8"
H: 43 cm | 16,9"



SOPHIA · ARMCHAIR



PRODUCT OPTIONS

UPHOLSTERY

Available in all Munna fabrics except Wild Silk.
Available in client's own material.

LEG FINISHES

Available upholstered, Brass, Nickel or Copper in Polished or Brushed finishing; Rosewood or Ebony veneer, solid Walnut, Wengé stain or lacquer in all RAL colours, in matt or gloss.

FINISHES AVAILABLE ON REQUEST

Legs: Gold, Silver or Copper leaf.

DIMENSIONS

W: 85 cm | 33,5"

D: 88 cm | 34,6"

H: 94 cm | 37"

SH: 45 cm | 17,7"

AH: 54 cm | 21,3"

WEIGHT

28 kg | 63 bs

35 kg | 77 lbs (packed)

COM REQUIREMENTS

FABRIC

6,00 mt | 236"

Based on plain fabric,
standard width 1,40 mts | 55"

LEATHER

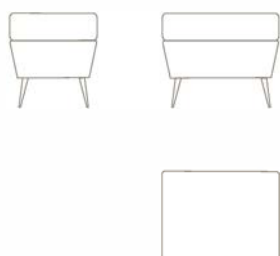
110 square feet

VOLUME

0,83 m³ | 29,3 cubic feet

(packed)

SOPHIA · OTTOMAN



PRODUCT OPTIONS

UPHOLSTERY

Available in all Munna fabrics except Wild Silk.
Available in client's own material.

LEG FINISHES

Available upholstered, Brass, Nickel or Copper in Polished or Brushed finishing; Rosewood or Ebony veneer, solid Walnut, Wengé stain or lacquer in all RAL colours, in matt or gloss.

FINISHES AVAILABLE ON REQUEST

Legs: Gold, Silver or Copper leaf.

DIMENSIONS

W: 60 cm | 23,6"

D: 45 cm | 17,7"

H: 48 cm | 18,9"

WEIGHT

13 kg | 28 lbs

16 kg | 35 lbs (packed)

COM REQUIREMENTS

FABRIC

2,5 mt | 98,4"

Based on plain fabric,
standard width 1,40 mts | 55"

LEATHER

50 square feet

VOLUME

0,22 m³ | 7,7 cubic feet

(packed)

CORSET · ARMCHAIR



PRODUCT OPTIONS

UPHOLSTERY

Available in all Munna fabrics except Wild Silk.
Available in client's own material.

LEG FINISHES

Available upholstered, Rosewood, Ebony or Walnut veneer, Wengé stain, lacquer in all RAL colours, in matt or gloss.

FINISHES AVAILABLE ON REQUEST

Legs: Gold, Silver or Copper leaf.

DIMENSIONS

W: 80 cm | 31,5"

D: 78 cm | 30,7"

H: 85 cm | 33,5"

SH: 45 cm | 17,7"

AH: 60 cm | 23,6"

WEIGHT

19 kg | 41,9 lbs

31 kg | 68,3 lbs (packed)

COM REQUIREMENTS

FABRIC

3,50 mts | 138"

Based on plain fabric,
standard width 1,40 mts | 55"

LEATHER

60 square feet

VOLUME

0,68 m³ | 24 cubic feet

CHANTAL · ARMCHAIR

COM REQUIREMENTS

FABRIC

7,00 mt | 275"
Based on plain fabric,
standard width 1,40 mts | 55"

LEATHER

130 square feet

VOLUME

0,74 m³ | 28 cubic feet
(packed)

WEIGHT

19 kg | 42 lbs
30 kg | 66 lbs (packed)

PRODUCT OPTIONS

UPHOLSTERY

Available in all Munna fabrics except Wild Silk.
Available in client's own material.

LEG FINISHES

Available upholstered; solid Walnut, Wengé stain or lacquer
in all RAL colours, in matt or gloss.

FEET COVERS

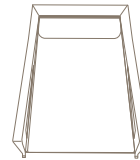
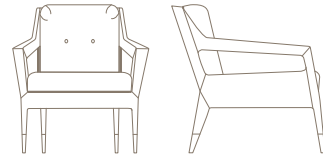
Brass, Nickel or Copper in Polished or Brushed finishing.

FINISHES AVAILABLE ON REQUEST

Legs: Gold, Silver or Copper leaf.

DIMENSIONS

W: 78 cm | 30,7"
D: 88 cm | 34,6"
H: 85 cm | 33,5"
SH: 46 cm | 18,1"
AH: 62 cm | 24,4"



PRIVATE · ARMCHAIR

COM REQUIREMENTS

FABRIC

4,00 mts | 158"
Based on plain fabric,
standard width 1,40 mts | 55"

LEATHER

70 square feet

VOLUME

0,79 m³ | 28 cubic feet
(packed)

WEIGHT

21 kg | 46 lbs
31 kg | 68 lbs (packed)

PRODUCT OPTIONS

UPHOLSTERY

Available in all Munna fabrics except Wild Silk.
Available in client's own material.

LEG FINISHES

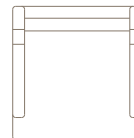
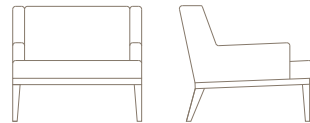
Available upholstered, Rosewood, Ebony or Walnut veneer,
Wengé stain or lacquer in all RAL colours, in matt or gloss.

FINISHES AVAILABLE ON REQUEST

Legs: Gold, Silver or Copper leaf.

DIMENSIONS

W: 87 cm | 34,3"
D: 90 cm | 35,4"
H: 77 cm | 30,3"
SH: 42 cm | 16,5"
AH: 50 cm | 19,7"



HOUSTON · ARMCHAIR

COM REQUIREMENTS

FABRIC

4 mts | 158"
Based on plain fabric,
standard width 1,40 mts | 55"

LEATHER

70 square feet

VOLUME

0,62 m³ | 22 cubic feet
(packed)

WEIGHT

20 kg | 44 lbs
30 kg | 66 lbs (packed)

PRODUCT OPTIONS

UPHOLSTERY

Available in all Munna fabrics except Wild Silk.
Available in client's own material.

LEG FINISHES

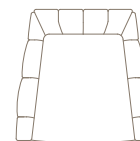
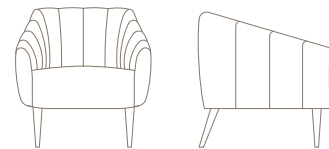
Available upholstered, Rosewood, Ebony or Walnut veneer,
Wengé stain or lacquer in all RAL colours, in matt or gloss.

FINISHES AVAILABLE ON REQUEST

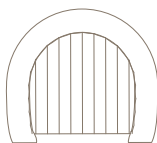
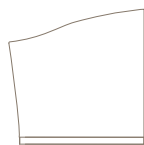
Legs: Gold, Silver or Copper leaf.

DIMENSIONS

W: 84 cm | 33,1"
D: 75 cm | 29,5"
H: 73 cm | 28,7"
SH: 45 cm | 17,7"
AH: 60 cm | 23,6"



LOUISE · ARMCHAIR



PRODUCT OPTIONS

UPHOLSTERY

Available in all Munna fabrics except Wild Silk.
Available in client's own material.

FOOTER FINISHES

Brass, Nickel or Copper in Polished or Brushed finishing;
Rosewood, Ebony and Walnut veneer, Wengé stain or
lacquer in all RAL colours, in matt or gloss.

FINISHES AVAILABLE ON REQUEST

Legs: Gold, Silver or Copper leaf.

DIMENSIONS

W: 87 cm | 34,3"

D: 80 cm | 31,5"

H: 80 cm | 31,5"

SH: 44 cm | 17,3"

AH: 63 cm | 24,8"

WEIGHT

32 kg | 71 lbs

40 kg | 88 lbs (packed)

COM REQUIREMENTS

FABRIC

Single colour - 5,00 mts | 197"
Double colours - Interior 2,5 mts
| 99"; Exterior 4,00 mts | 158"

Based on plain fabric,
standard width 1,40 mts | 55"

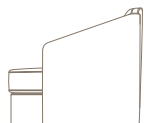
LEATHER

One colour - 80 square feet
Two colours - Interior 40 square
feet; Exterior 70 square feet

VOLUME

0,71 m³ | 25 cubic feet
(packed)

JOSEPHINE · ARMCHAIR



PRODUCT OPTIONS

UPHOLSTERY

Available in all Munna fabrics except Wild Silk.
Available in client's own material.

PIPPING

Available in all Munna fabrics.
Available in client's own material.

DIMENSIONS

W: 93 cm | 36,6"

D: 92 cm | 36,2"

H: 82 cm | 32,3"

SH: 42 cm | 16,5"

AH: 58 cm | 22,8"

WEIGHT

27 kg | 60 lbs

40 kg | 88 lbs (packed)

COM REQUIREMENTS

FABRIC

Body: 6,5 mt | 256"
Pipping: 1,5mt | 59,1"
Based on plain fabric,
standard width 1,40 mts | 55"

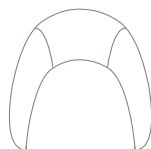
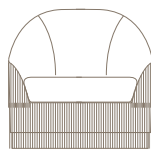
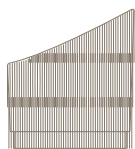
LEATHER

Body: 100 square feet
Pipping: 30 square feet

VOLUME

0,87 m³ | 30,7 cubic feet
(packed)

FRINGES · ARMCHAIR



PRODUCT OPTIONS

UPHOLSTERY

Available in all Munna fabrics except Wild Silk,
Leather and Classic Leather.
Available in client's own material.

FRINGES

Available in all Munna fringes. Not available in
client's own material.

DIMENSIONS

W: 94 cm | 37"

D: 85 cm | 33,5"

H: 90 cm | 35,4"

SH: 45 cm | 17,7"

AH: 56 cm | 22"

WEIGHT

33 kg | 72,6 lbs

42 kg | 92,4 lbs (packed)

COM REQUIREMENTS

FABRIC

7,5 mt | 295"
Based on plain fabric,
standard width 1,40 mts | 55"

VOLUME

0,98 m³ | 32,15 cubic feet
(packed)

CANDY · ARMCHAIR

COM REQUIREMENTS

FABRIC

4,00 mts | 158"

Based on plain fabric,
standard width 1,40 mts | 55"

LEATHER

70 square feet

PRODUCT OPTIONS

This model is made with pipping in the silhouette.
Available in all Munna fabrics, and available in client's
own material. Upholstery nails are optional:

a) Piping

b) Piping and Upholstery nails (silhouette)

UPHOLSTERY

Available in all Munna fabrics except Wild Silk.
Available in client's own material.

LEG FINISHES

Available upholstered, Rosewood, Ebony or Walnut veneer,
Wengé stain or lacquer in all RAL colours, in matt or gloss.

UPHOLSTERY NAILS

Matt or plated nickel, plated brass, bronze renaissance
or old gold speckled.

FINISHES AVAILABLE ON REQUEST

Legs: Gold, Silver or Copper leaf.



VOLUME

0,72 m³ | 25,4 cubic feet
(packed)

WEIGHT

17 kg | 37 lbs
26 kg | 57 lbs (packed)

DIMENSIONS

W: 73 | 28,7"
D: 83cm | 32,7"
H: 99cm | 39"
SH: 44 cm | 17,3
AH: 48cm | 18,9"

CLEO · ARMCHAIR

COM REQUIREMENTS

FABRIC

4,5 mts | 177"

Based on plain fabric,
standard width 1,40 mts | 55"

LEATHER

80 square feet

PRODUCT OPTIONS

UPHOLSTERY

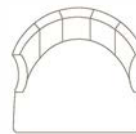
Available in all Munna fabrics except Wild Silk.
Available in client's own material.

LEG FINISHES

Available upholstered, Rosewood, Ebony or Walnut veneer,
Wengé stain or lacquer in all RAL colours, in matt or gloss.

FINISHES AVAILABLE ON REQUEST

Legs: Gold, Silver or Copper leaf.



VOLUME

1,01 m³ | 35,7 cubic feet
(packed)

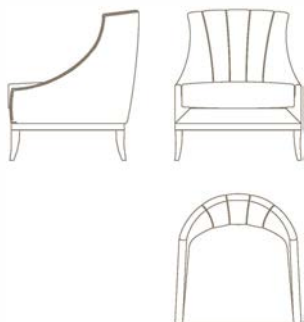
WEIGHT

26 kg | 57 lbs
37 kg | 82 lbs (packed)

DIMENSIONS

W: 87 cm | 34,3"
D: 86 cm | 33,9"
H: 108 cm | 42,5"
SH: 44 cm | 17,3"

HERITAGE · ARMCHAIR



PRODUCT OPTIONS

This model is made with pipping in the silhouette.

Available in all Munna fabrics, and available in client's own material. Upholstery nails are optional:

- a) Piping
- b) Piping and Upholstery nails (silhouette)

UPHOLSTERY

Available in all Munna fabrics except Wild Silk.

Available in client's own material.

LEG FINISHES

Available upholstered, Rosewood, Ebony or Walnut veneer, Wengé stain or lacquer in all RAL colours, in matt or gloss.

UPHOLSTERY NAILS

Matt or plated nickel, plated brass, bronze renaissance and old gold speckled.

FINISHES AVAILABLE ON REQUEST

Legs: Gold, Silver or Copper leaf.

DIMENSIONS

W: 85 cm | 33,5"

D: 89 cm | 35"

H: 102 cm | 40,2"

SH: 53 cm | 20,9"

WEIGHT

21 kg | 46 lbs

30 kg | 66 lbs (packed)

COM REQUIREMENTS

FABRIC

5,5 mts | 217"

Based on plain fabric, standard width 1,40 mts | 55"

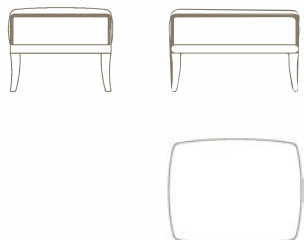
LEATHER

85 square feet

VOLUME

1,03 m³ | 36,4 cubic feet (packed)

HERITAGE · OTTOMAN



PRODUCT OPTIONS

UPHOLSTERY

Available in all Munna fabrics except Wild Silk.

Available in client's own material.

LEG FINISHES

Available in Upholstery, Rosewood, Ebony, Walnut veneer, Wengé stain or lacquer in all RAL colours, in matt or gloss.

UPHOLSTERY NAILS

Matt or plated nickel, plated brass, bronze renaissance and old gold speckled.

FINISHES AVAILABLE ON REQUEST

Legs: Gold, Silver or Copper leaf.

DIMENSIONS

W: 65 cm | 25,6"

D: 52 cm | 20,5"

H: 46 cm | 18,1"

WEIGHT

10 kg | 22 lbs

13 kg | 28,7 lbs (packed)

COM REQUIREMENTS

FABRIC

1,50 mts | 59"

Based on plain fabric, standard width 1,40 mts | 55"

LEATHER

30 square feet

VOLUME

0,23 m³ | 8 cubic feet (packed)

SOFT & CREAMY · ARMCHAIR

COM REQUIREMENTS

FABRIC

6,00 mts | 236"
Based on plain fabric,
standard width 1,40 mts | 55"

LEATHER

100 square feet

PRODUCT OPTIONS

UPHOLSTERY

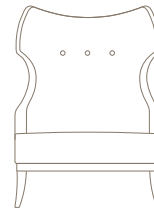
Available in all Munna fabrics except Wild Silk.
Available in client's own material.

LEG FINISHES

Available in Upholstery, Rosewood, Ebony or Walnut veneer,
Wengé stain or lacquer in all RAL colours, in matt or gloss.

FINISHES AVAILABLE ON REQUEST

Legs: Gold, Silver or Copper leaf.



VOLUME

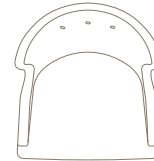
1,01 m³ | 35,7 cubic feet
(packed)

WEIGHT

25 kg | 55 lbs
35 kg | 77 lbs (packed)

DIMENSIONS

W: 82 cm | 32,3"
D: 88 cm | 34,6"
H: 113 cm | 44,5"
SH: 44 cm | 17,3"
AH: 56 cm | 22"



SOFT & CREAMY · OTTOMAN

COM REQUIREMENTS

FABRIC

1,50 mts | 59"
Based on plain fabric,
standard width 1,40 mts | 55"

LEATHER

30 square feet

PRODUCT OPTIONS

UPHOLSTERY

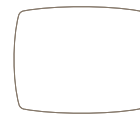
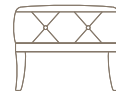
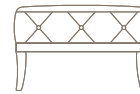
Available in all Munna fabrics except Wild Silk.
Available in client's own material.

LEG FINISHES

Available in Rosewood, Ebony or Walnut veneer, Wengé
stain or lacquer in all RAL colours, in matt or gloss.

FINISHES AVAILABLE ON REQUEST

Legs: Gold, Silver or Copper leaf.



VOLUME

0,23 m³ | 8 cubic feet
(packed)

WEIGHT

9 kg | 20 lbs
11 kg | 24 lbs (packed)

DIMENSIONS

W: 63 cm | 24,8"
D: 50 cm | 19,7"
H: 40 cm | 15,7"

QUEEN B · SWIVEL ARMCHAIR

COM REQUIREMENTS

FABRIC

7,5 mts | 295,3"
Based on plain fabric,
standard width 1,40 mts | 55"

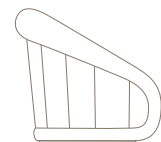
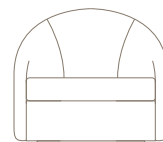
LEATHER

120 square feet

PRODUCT OPTIONS

UPHOLSTERY

Available in all Munna fabrics except Wild Silk.
Available in client's own material.



VOLUME

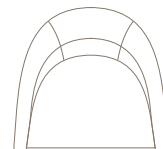
1,1 m³ | 35,3 cubic feet
(packed)

WEIGHT

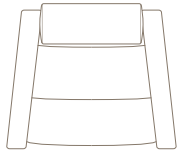
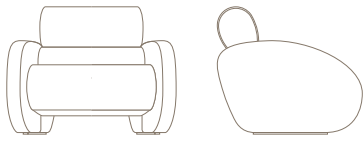
37 kg | 81,5 lbs
48 kg | 105,8 lbs (packed)

DIMENSIONS

W: 100 cm | 39,4"
D: 100 cm | 39,4"
H: 93 cm | 36,6"
SH: 42 cm | 16,5"



FRANK . ARMCHAIR



PRODUCT OPTIONS

UPHOLSTERY

Available in all Munna fabrics except Wild Silk.
Available in client's own material.

COM REQUIREMENTS

FABRIC

6,5 mts | 256"
Based on plain fabric,
standard width 1,40 mts | 55"

LEATHER

100 square feet

DIMENSIONS

W: 105 cm | 41,3"

D: 90 cm | 35,4"

H: 79 cm | 31,1"

SH: 43 cm | 16,9"

AH: 58 cm | 22,8"

WEIGHT

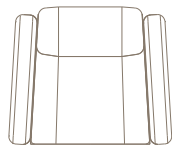
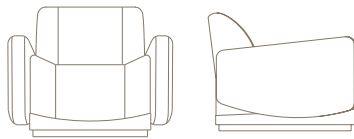
39 kg | 86 lbs

135 kg | 298 lbs (packed)

VOLUME

1,02 m³ | 36 cubic feet
(packed)

GRAN TORINO . ARMCHAIR



PRODUCT OPTIONS

UPHOLSTERY

Available in all Munna fabrics except Wild Silk.
Available in client's own material.

FOOTER

Brass, Nickel or Copper in Polished or Brushed
finishing; Rosewood, Ebony or Walnut veneer, Wengé
stain or lacquer in all RAL colours, in matt or gloss.

COM REQUIREMENTS

FABRIC

5,5 mts | 216,5"
Based on plain fabric,
standard width 1,40 mts | 55"

LEATHER

100 square feet

DIMENSIONS

W: 108 cm | 42,5"

D: 96 cm | 37,8"

H: 85 cm | 33,5"

SH: 47 cm | 18,5"

AH: 66 cm | 26"

WEIGHT

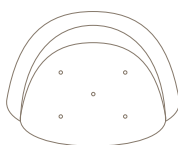
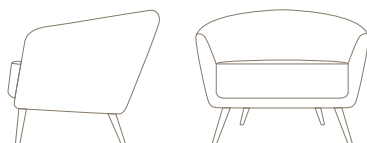
50 kg | 110 lbs

60 kg | 132 lbs (packed)

VOLUME

1,19 m³ | 42 cubic feet
(packed)

CUTIE . ARMCHAIR



PRODUCT OPTIONS

UPHOLSTERY

Available in all Munna fabrics except Wild Silk.
Available in client's own material.

LEG FINISHES

Available in Upholstery, Silver or Copper leaf; Rosewood,
Ebony or Walnut veneer, Wengé stain or lacquer in all
RAL colours, in matt or gloss.

COM REQUIREMENTS

FABRIC

4,5 mts | 177"
Based on plain fabric,
standard width 1,40 mts | 55"

LEATHER

80 square feet

DIMENSIONS

W: 100 cm | 39,4"

D: 88 cm | 34,6"

H: 78 cm | 30,7"

SH: 47 cm | 18,5"

AH: 67 cm | 26,4"

WEIGHT

18 kg | 40 lbs

27kg | 59,5 lbs (packed)

VOLUME

1,03 m³ | 36,4 cubic feet
(packed)

MARGARET · ARMCHAIR

COM REQUIREMENTS

FABRIC

8 mts | 315"
Based on plain fabric,
standard width 1,40 mts | 55"

LEATHER

130 square feet

VOLUME

0,97 m³ | 34 cubic feet
(packed)

WEIGHT

21 kg | 46 lbs
30 kg | 66 lbs (packed)

DIMENSIONS

W: 101 cm | 39,8"
D: 87 cm | 34,3"
H: 94 cm | 37"
SH: 48 cm | 18,9"
AH: 60 cm | 23,6"

PRODUCT OPTIONS

UPHOLSTERY

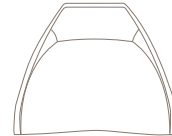
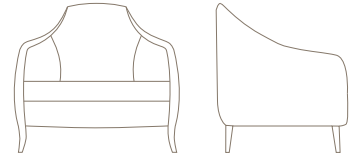
Available in all Munna fabrics except Wild Silk.
Available in client's own material.

LEG FINISHES

Available in Upholstery, Rosewood, Ebony or Walnut
vener, Wengé stain or lacquer in all RAL colours,
in matt or gloss.

FINISHES AVAILABLE ON REQUEST

Legs: Gold, Silver or Copper leaf.



OLYMPIA · ARMCHAIR

COM REQUIREMENTS

FABRIC

7,50 mts | 295"
Based on plain fabric,
standard width 1,40 mts | 55"

LEATHER

130 square feet

VERSION

Left or right
(left version in technical)

VOLUME

1,3 m³ | 46 cubic feet
(packed)

WEIGHT

35 kg | 77 lbs
46 kg | 101 lbs (packed)

DIMENSIONS

W: 110 cm | 43,3"
D: 100 cm | 39,4"
H: 91 cm | 35,8"
SH: 42 cm | 16,5"

PRODUCT OPTIONS

UPHOLSTERY

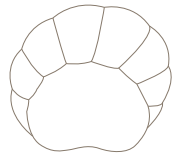
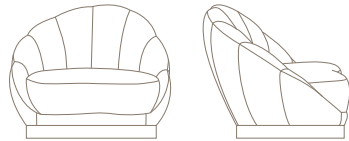
Available in all Munna fabrics except Wild Silk.
Available in client's own material.

FOOTER FINISHES

Brass, Nickel or Copper in Polished or Brushed
finishing; Rosewood, Ebony or Walnut veneer, Wengé
stain or lacquer in all RAL colours, in matt or gloss.

FINISHES AVAILABLE ON REQUEST

Legs: Gold, Silver or Copper leaf.



BE MINE · LOVE SEAT

COM REQUIREMENTS

FABRIC

9,00 mts | 355"
Based on plain fabric,
standard width 1,40 mts | 55"

LEATHER

150 square feet

VOLUME

1 m³ | 47,32 cubic feet
(packed)

WEIGHT

33 kg | 72,6 lbs
42 kg | 92,4 lbs (packed)

DIMENSIONS

W: 145 cm | 57,1"
D: 93 cm | 36,6"
H: 80 cm | 31,5"
SH: 45 cm | 17,7"
AH: 66 cm | 26"

PRODUCT OPTIONS

UPHOLSTERY

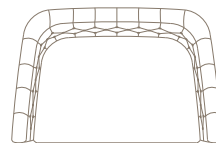
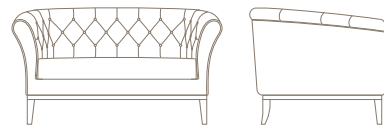
Available in all Munna fabrics except Wild Silk.
Available in client's own material.

LEG FINISHES

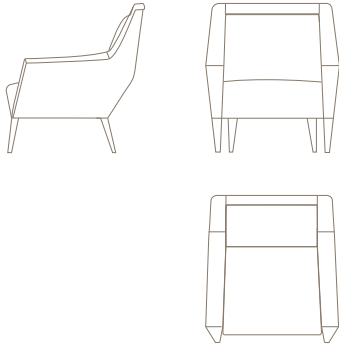
Available in Upholstery, Rosewood, Ebony or Walnut
vener, Wengé stain or lacquer in all RAL colours,
in matt or gloss.

FINISHES AVAILABLE ON REQUEST

Legs: Gold, Silver or Copper leaf.



BLONDIE ARMCHAIR



PRODUCT OPTIONS

UPHOLSTERY

Available in all Munna fabrics except Wild Silk.
Available in client's own material.

LEG FINISHES

Available in Upholstery, Rosewood, Ebony or Walnut veneer, Wengé stain or lacquer in all RAL colours, in matt or gloss.

FINISHES AVAILABLE ON REQUEST

Legs: Gold, Silver or Copper leaf.

COM REQUIREMENTS

FABRIC

5,50 mts | 220"
Based on plain fabric, standard width 1,40 mts | 55"

LEATHER

90 square feet

DIMENSIONS

W: 87 cm | 34,3"

D: 90 cm | 35,4"

H: 97 cm | 38,1"

SH: 47 cm | 18,5"

AH: 61 cm | 24"

WEIGHT

20 kg | 44,1 lbs

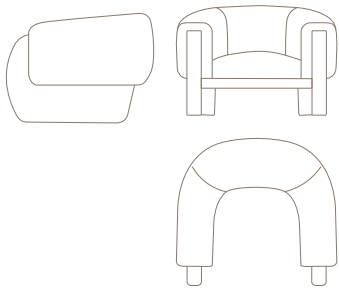
30 kg | 66,1 lbs (packed)

VOLUME

0,9 m³ | 31,8 cubic feet

(packed)

LUKE · ARMCHAIR



PRODUCT OPTIONS

UPHOLSTERY

Available in all Munna fabrics except Wild Silk.
Available in client's own material

COM REQUIREMENTS

FABRIC

Body: 6,5 mt | 255"*
Based on plain fabric, standard width 1,40 mts | 55"

LEATHER

Body: 110 square feet

DIMENSIONS

W: 120 cm | 47,2"

D: 110 cm | 43,3"

H: 82 cm | 32,3"

SH: 47 cm | 18,5"

AH: 72 cm | 28,3"

WEIGHT

37 kg | 81,6 lbs

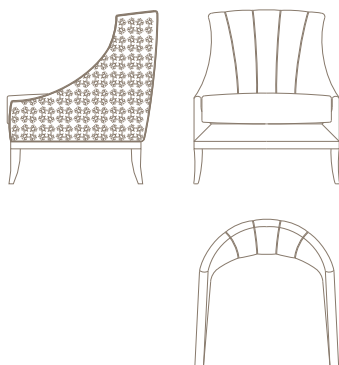
42 kg | 92,6 lbs (packed)

VOLUME

1,25 m³ | 44,1 cubic feet

(packed)

HERITAGE · ARMCHAIR · LIMITED EDITION - Revisited by Susana Martins



AS PICTURED

UPHOLSTERY

Cotton Satin, ref. Black, CTS06

Legs: Black gloss lacquer

SILVER DETAILS

5.236 pieces of Portuguese silver filigree, in 187 modules, with a total weight of 5800 grams.

DIMENSIONS

W: 83 cm | 32,7"

D: 85 cm | 33,5"

H: 98 cm | 38,6"

SH: 47 cm | 18,5"

WEIGHT

27 kg | 59,5 lbs

45 kg | 99 lbs (packed)

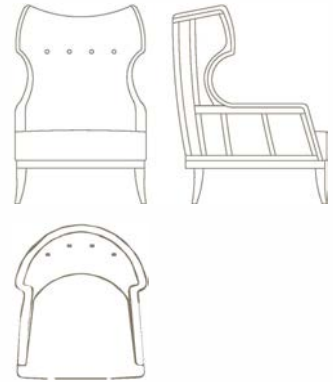
VOLUME

1,03 m³ | 36,4 cubic feet

(packed)

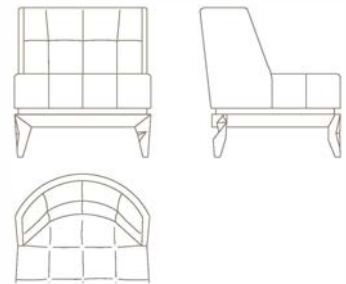
SOFT & CREAMY · ARMCHAIR · LIMITED EDITION - Revisited by Gonçalo Campos

		AS PICTURED UPHOLSTERY Cotton Velvet, ref. Light Grey, CV16 on the front, and on the back Cotton Velvet, ref. Pure White, CV01.	
		LEGS AND FRAME Solid beech frame in gold leaf with gloss finishing	
VOLUME 1,11 m ³ 39,2 cubic feet (packed)	WEIGHT 25kg 55lbs 55 kg 121 lbs (packed)	DIMENSIONS W: 82 cm 32,3" D: 88 cm 34,6" H: 113 cm 44,5" SH: 44 cm 17,3" AH: 56 cm 22"	



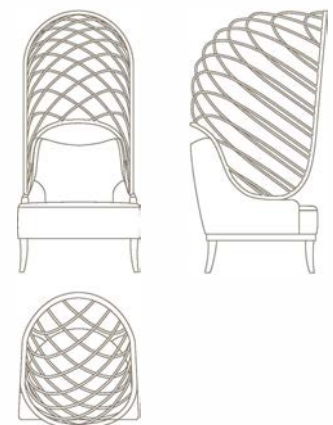
CAPRICE · ARMCHAIR · LIMITED EDITION - Revisited by Inês Caleiro

		AS PICTURED UPHOLSTERY Cotton Satin, Ref. Eggshell, CS11; Piping in old gold vinyl	
		LEGS Gold leaf and lacquer in lime colour	
VOLUME 0,56 m ³ 19,8 cubic feet (packed)	WEIGHT 14kg 30 lbs 35kg 77lbs (packed)	DIMENSIONS W: 70 cm 27,6" D: 72 cm 28,3" H: 77 cm 30,3" SH: 42 cm 16,5"	

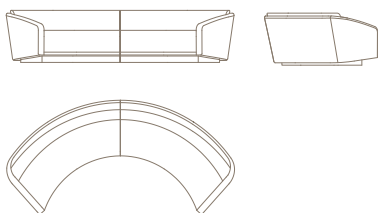


BECOMES ME · ARMCHAIR · LIMITED EDITION - Revisited by Toni Grilo

		AS PICTURED UPHOLSTERY Leather, Ref. Milk, L01	
		METAL STRUCTURE Stainless Steel in brass finishing	
		LEGS Gloss gold leaf	
VOLUME 1,09 m ³ 38,4 cubic feet (packed)	WEIGHT 50 kg 110lbs 135 kg 298 lbs (packed)	DIMENSIONS W: 74 cm 29,1" D: 86 cm 33,9" H: 172 cm 67,7" SH: 43 cm 16,9"	



FERDINAND · 350 SOFA



PRODUCT OPTIONS

UPHOLSTERY

Available in all Munna fabrics except Wild Silk.
Available in client's own material.

FOOTER FINISHES

Brass, Nickel or Copper in Polished or Brushed finishing;
or in Rosewood, Ebony, Walnut, Wengé stain or lacquer
in all RAL colours.

FINISHES AVAILABLE ON REQUEST

Legs: Gold, Silver or Copper leaf.

COM REQUIREMENTS

FABRIC

24,00 mt | 945"
Based on plain fabric, standard
width 1,40 mts | 55"

LEATHER

400 square feet

DIMENSIONS

W: 350 cm | 137,8"

D: 185 cm | 72,8"

H: 80 cm | 31,5"

SH: 41 cm | 16,1"

AH: 56 cm | 22,1"

WEIGHT

160 kg | 353 lbs

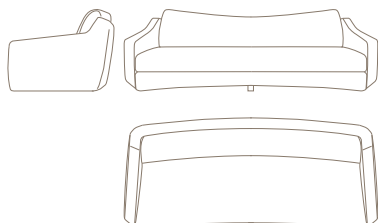
450 kg | 992 lbs (packed)

VOLUME

5,88 m³ | 207,7 cubic feet

(packed)

MAVERICK · 280 SOFA



PRODUCT OPTIONS

UPHOLSTERY

Available in all Munna fabrics except Wild Silk.
Available in client's own material.

Available upholstered with padding and feathers or
upholstered with foam.

COM REQUIREMENTS

FABRIC

15,00 mts | 590"

Based on plain fabric,
standard width 1,40 mts | 55"

LEATHER

280 square feet

DIMENSIONS

W: 280 cm | 110,2"

D: 120 cm | 47,2"

H: 90 cm | 35,4"

SH: 42 cm | 16,5"

AH: 58 cm | 22,8"

WEIGHT

92 kg | 202,8 lbs

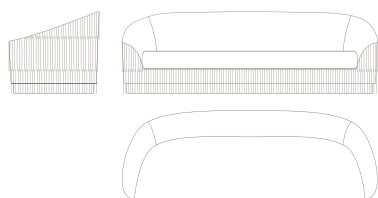
202 kg | 445,3 lbs (packed)

VOLUME

3,82 m³ | 134,9 cubic feet

(packed)

FRINGES · 280 SOFA



PRODUCT OPTIONS

UPHOLSTERY

Available in all Munna fabrics except Wild silk,
Leather and Classic Leather.

Available in client's own material.

FRINGES

Available in all Munna fringes.

Not available in client's own material.

COM REQUIREMENTS

FABRIC

16 mts | 629"

Based on plain fabric,
standard width 1,40 mts | 55"

DIMENSIONS

W: 280 cm | 110,2"

D: 100 cm | 39,4"

H: 91 cm | 35,8"

SH: 48 cm | 18,9"

AH: 60 cm | 23,6"

WEIGHT

92 kg | 203 lbs

303 kg | 668 lbs (packed)

VOLUME

3,25m³ | 114,8 cubic feet

(packed)

ROSIE · 280 SOFA

COM REQUIREMENTS

FABRIC

12 mts | 472"
Based on plain fabric,
standard width 1,40 mts | 55"

LEATHER

200 square feet

VOLUME

3,44 m³ | 121,5 cubic feet
(packed)

WEIGHT

77 kg | 170 lbs
295 kg | 650 lbs (packed)

DIMENSIONS

W: 280 cm | 110,2"
D: 98 cm | 38,6"
H: 100 cm | 39,4"
SH: 47 cm | 18,5"
AH: 55 cm | 21,6"

PRODUCT OPTIONS

UPHOLSTERY

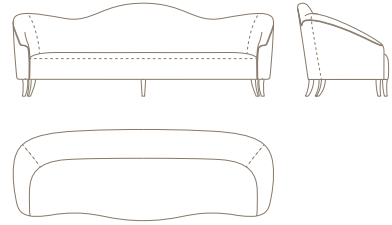
Available in all Munna fabrics except Wild silk.
Available in client's own material.

LEG FINISHES

Available in Upholstery, Rosewood, Ebony or Walnut
vener, Wengé stain or lacquer in all RAL colours,
in matt or gloss.

FINISHES AVAILABLE ON REQUEST

Legs: Gold, Silver or Copper leaf.



JOSEPHINE · 280 SOFA

COM REQUIREMENTS

FABRIC

Body: 16 mt | 630"*
Piping: 4 mt | 157,5"*
*only if the piping colour is
different from the body colour
Based on plain fabric,
standard width 1,40 mts | 55"

LEATHER

Body: 335 square feet Piping:
70 square feet

VOLUME

3,05 m³ | 108 cubic feet
(packed)

WEIGHT

63 kg | 138 lbs
266 kg | 586 lbs (packed)

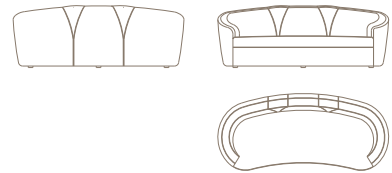
DIMENSIONS

W: 280 cm | 110,2"
D: 103 cm | 40,6"
H: 83 cm | 32,7"
SH: 42 cm | 16,5"
AH: 58 cm | 22,8"

PRODUCT OPTIONS

UPHOLSTERY

Available in all Munna fabrics except Wild Silk.
Available in client's own material.



MARGOT · 280 SOFA

COM REQUIREMENTS

FABRIC

18 mts | 709"
Based on plain fabric,
standard width 1,40 mts | 55"

LEATHER

300 square feet

VOLUME

4,4 m³ | 155 cubic feet
(packed)

WEIGHT

80 kg | 176,3 lbs
340 kg | 749,5 lbs (packed)

DIMENSIONS

W: 280 cm | 110,2"
D: 137 cm | 53,9"
H: 93 cm | 36,6"
SH: 46 cm | 18,1"

PRODUCT OPTIONS

UPHOLSTERY

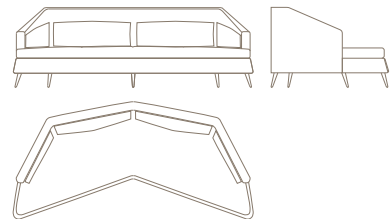
Available in all Munna fabrics except Wild silk.
Available in client's own material.

LEG FINISHES

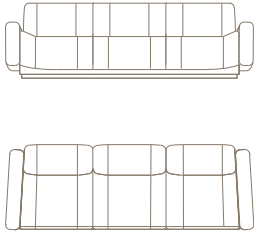
Available upholstered, Brass, Nickel or Copper
in Polished or Brushed finishing; Rosewood or
Ebony veneer, solid Walnut, Wengé stain or lacquer
in all RAL colours, in matt or gloss.

FINISHES AVAILABLE ON REQUEST

Legs: Gold, Silver or Copper leaf.



GRAN TORINO · 280 SOFA



PRODUCT OPTIONS

UPHOLSTERY

Available in all Munna fabrics except Wild Silk.
Available in client's own material.

FOOTER

Brass, Nickel or Copper in Polished or brushed finishing;
Rosewood, Ebony or Walnut veneer,
Wengé stain or lacquer in all RAL colours,
in matt or gloss

DIMENSIONS

W: 280 cm | 110,2"
D: 96 cm | 37,8"
H: 85 cm | 33,5"
SH: 47 cm | 18,5"
AH: 66 cm | 26"

WEIGHT

150 kg | 330 lbs
364 kg | 802 lbs (packed)

COM REQUIREMENTS

FABRIC

16 mts | 630"
Based on plain fabric,
standard width 1,40 mts | 55"

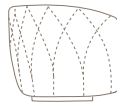
LEATHER

260 square feet

VOLUME

2,89 m³ | 102,5 cubic feet
(packed)

KIKI · 260 SOFA



PRODUCT OPTIONS

UPHOLSTERY

Available in all Munna fabrics except Wild silk.
Available in client's own material.

DIMENSIONS

W: 260 cm | 102,4"
D: 132 cm | 52"
H: 114 cm | 44,9"
SH: 47 cm | 18,5"

WEIGHT

100 kg | 220,5 lbs
380 kg | 837,8 lbs (packed)

COM REQUIREMENTS

FABRIC

17 mts | 669"
Based on plain fabric,
standard width 1,40 mts | 55"

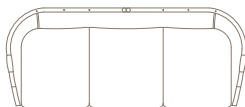
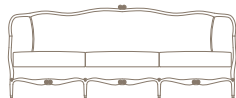
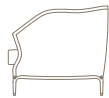
LEATHER

300 square feet

VOLUME

5,25 m³ | 185,4 cubic feet
(packed)

LOUIS · SOFA



PRODUCT OPTIONS

UPHOLSTERY

Available in all Munna fabrics except Wild Silk.
Available in client's own material.

LEG FINISHES

Solid wood with Stain in all RAL colours, with matt
varnish.

DIMENSIONS

W: 250 cm | 98,4"
D: 97 cm | 38,2"
H: 94 cm | 37"
SH: 45 cm | 17,7"
AH: 62 cm | 24,4"

WEIGHT

63 kg | 139 lbs
248 kg | 547 lbs (packed)

COM REQUIREMENTS

FABRIC

13,00 mts | 512"
Based on plain fabric,
standard width 1,40 mts | 55"

LEATHER

220 square feet

VOLUME

2,37 m³ | 83,7 cubic feet
(packed)

LUKE · 240 SOFA

COM REQUIREMENTS

FABRIC

13 mts | 511,8"
Based on plain fabric,
standard width 1,40 mts | 55"

LEATHER

200 square feet

VOLUME

2,8 m3 | 988 cubic feet
(packed)

WEIGHT

86 kg | 189,6 lbs
210 kg | 463 lbs (packed)

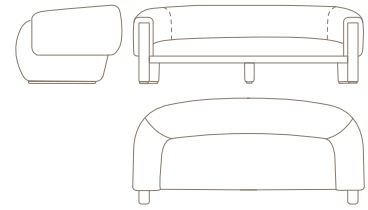
PRODUCT OPTIONS

UPHOLSTERY

Available in all Munna fabrics except Wild Silk.
Available in client's own material.

DIMENSIONS

W: 240 cm | 94,5"
D: 110 cm | 43,3"
H: 82 cm | 32,3"
SH: 47 cm | 18,5"
AH: 72cm | 28,3"



LOUISE · 240 SOFA

COM REQUIREMENTS

FABRIC

Single Colour: 12,00 mt | 473"
Double Colour: Interior 7,5 mt
| 295" Exterior 8,00 mt | 315"
Based on plain fabric,
standard width 1,40 mts | 55"

LEATHER

Single Colour: 250 square feet
Double Colours: Interior 130
square feet / Exterior 130
square feet

VOLUME

3,12 m³ | 110,2 cubic feet
(packed)

WEIGHT

40 kg | 88 lbs
225 kg | 496 lbs (packed)

PRODUCT OPTIONS

UPHOLSTERY

Available in all Munna fabrics except Wild Silk.
Available in client's own material.

FOOTER FINISHES

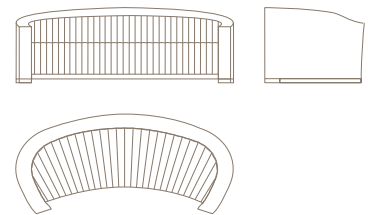
Brass, Nickel or Copper in Polished or Brushed finishing;
or in Rosewood, Ebony, Walnut, Wengé stain or lacquer
in all RAL colours, in matt or gloss.

AVAILABLE ON REQUEST

Gold, Silver or Copper leaf.

DIMENSIONS

W: 240 cm | 94,5"
D: 110 cm | 43,3"
H: 83 cm | 32,7"
SH: 45 cm | 17,7"
AH: 63 cm | 24,8"



HUGHES · 240 SOFA

COM REQUIREMENTS

FABRIC

13,00 mt | 511,8"
Based on plain fabric,
standard width 1,40 mts | 55"

LEATHER

290 square feet

VERSION

Left or right

VOLUME

3,12 m³ | 110,2 cubic feet
(packed)

WEIGHT

105 kg | 231,5 lbs
200 kg | 441 lbs (packed)

PRODUCT OPTIONS

UPHOLSTERY

Available in all Munna fabrics except Wild Silk.
Available in client's own material.

FOOTER FINISHES

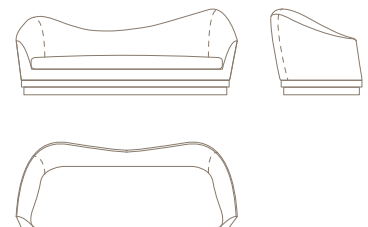
Brass, Nickel or Copper in Polished or Brushed finishing;
or in Rosewood, Ebony, Walnut, Wengé stain or lacquer in
all RAL colours, in matt or gloss.

FINISHES AVAILABLE ON REQUEST

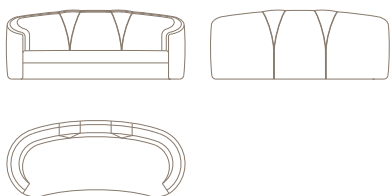
Footer: Gold, Silver or Copper leaf.

DIMENSIONS

W: 240 cm | 94,5"
D: 95 cm | 37,4"
H: 95 cm | 37,4"
SH: 44 cm | 17,3"
AH: 64 cm | 25,2"



JOSEPHINE · 230 SOFA



PRODUCT OPTIONS

UPHOLSTERY

Available in all Munna fabrics except Wild Silk.
Available in client's own material.

DIMENSIONS

W: 230 cm | 90,6"

D: 103 cm | 40,6"

H: 83 cm | 32,7"

SH: 42 cm | 16,5"

AH: 58 cm | 22,8"

WEIGHT

52 kg | 115 lbs

220 kg | 485 lbs (packed)

COM REQUIREMENTS

FABRIC:

Body: 13,00 mt | 511,8"*

Piping: 3 mt | 118,1"*

*only if the piping colour is different from the body colour

Based on plain fabric, standard width 1,40 mts | 55"

LEATHER

Body: 290 square feet

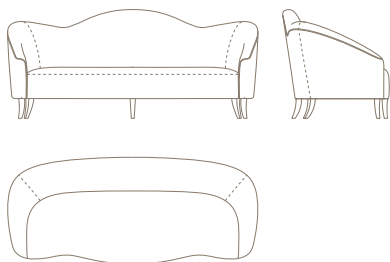
Piping: 50 square feet

VOLUME

2,34 m³ | 82,6 cubic feet

(packed)

ROSIE · 230 SOFA



PRODUCT OPTIONS

UPHOLSTERY

Available in all Munna fabrics except Wild silk.
Available in client's own material.

LEG FINISHES

Available in Upholstery, Rosewood, Ebony or Walnut veneer, Wengé stain or lacquer in all RAL colours, in matt or gloss.

FINISHES AVAILABLE ON REQUEST

Legs: Gold, Silver or Copper leaf.

DIMENSIONS

W: 230 cm | 90,5"

D: 98 cm | 38,6"

H: 100 cm | 39,4"

SH: 47 cm | 18,5"

AH: 55 cm | 21,6"

WEIGHT

65 kg | 143 lbs

242kg | 533 lbs (packed)

COM REQUIREMENTS

FABRIC

11 mts | 433"

Based on plain fabric,

standard width 1,40 mts | 55"

LEATHER

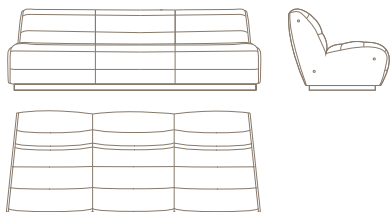
180 square feet

VOLUME

2,85 m³ | 100,6 cubic feet

(packed)

NEWMAN · 230 SOFA



PRODUCT OPTIONS

UPHOLSTERY

Available in all Munna fabrics except Wild Silk.
Available in client's own material.

FOOTER FINISHES

Brass, Nickel or Copper in Polished or Brushed finishing;
or in Rosewood, Ebony, Walnut, Wengé stain or lacquer
in all RAL colours in matt or gloss.

FINISHES AVAILABLE ON REQUEST

Legs: Gold, Silver or Copper leaf.

DIMENSIONS

W: 230 cm | 90,6"

D: 93 cm | 36,6"

H: 75 cm | 29,5"

SH: 43 cm | 16,9"

WEIGHT

90 kg | 198 lbs

180 kg | 396 lbs (packed)

COM REQUIREMENTS

FABRIC

13,00 mt | 511"

Based on plain fabric,
standard width 1,40 mts | 55"

LEATHER

220 square feet

VOLUME

2,22 m³ | 78,4 cubic feet

(packed)

SOPHIA · 210 SOFA

COM REQUIREMENTS

FABRIC

12 mts | 472,4"

Based on plain fabric,
standard width 1,40 mts | 55"

LEATHER

200 square feet

PRODUCT OPTIONS

UPHOLSTERY

Available in all Munna fabrics except Wild Silk.

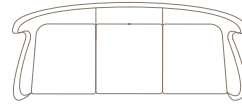
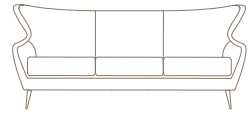
Available in client's own material.

LEG FINISHES

Available upholstered; Brass, Nickel or Copper in Polished or Brushed finishing; Rosewood or Ebony veneer, solid Walnut, Wengé stain or lacquer in all RAL colours, in matt or gloss.

FINISHES AVAILABLE ON REQUEST

Legs: Gold, Silver or Copper leaf.



VOLUME

2,46 m³ | 86,9 cubic feet
(packed)

WEIGHT

35 kg | 77lbs
181 kg | 399 lbs (packed)

DIMENSIONS

W: 210 cm | 82,7"

D: 88 cm | 34,6"

H: 94 cm | 37"

SH: 45 cm | 17,7"

AH: 54 cm | 21,3"

MARGARET · 210 SOFA

COM REQUIREMENTS

FABRIC

12 mts | 472"

Based on plain fabric,
standard width 1,40 mts | 55"

LEATHER

250 square feet

PRODUCT OPTIONS

UPHOLSTERY

Available in all Munna fabrics except Wild Silk.

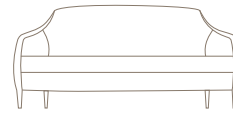
Available in client's own material.

LEG FINISHES

Available upholstered; Rosewood, Ebony or Walnut veneer Wengé stain or lacquer in all RAL colours, in matt or gloss

FINISHES AVAILABLE ON REQUEST

Legs: Gold, Silver or Copper leaf.



VOLUME

2,72 m³ | 96 cubic feet
(packed)

WEIGHT

30 kg | 66 lbs
90 kg | 198,4 lbs (packed)

DIMENSIONS

W: 210 cm | 82,7"

D: 92 cm | 36,2"

H: 95 cm | 37,4"

SH: 48 cm | 18,8"

AH: 60 cm | 23,6"

FRINGES · 2 SEAT SOFA

COM REQUIREMENTS

FABRIC

13 mts | 511,8"

Based on plain fabric,
standard width 1,40 mts | 55"

PRODUCT OPTIONS

UPHOLSTERY

Available in all Munna fabrics except Wild silk,

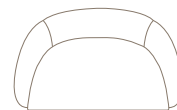
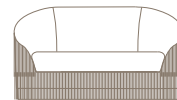
Leather and Classic Leather.

Available in client's own material.

FRINGES

Available in all Munna fringes.

Not available in client's own material.



VOLUME

1,94 m³ | 68,5 cubic feet
(packed)

WEIGHT

53 kg | 116,8 lbs
83 kg | 183 lbs (packed)

DIMENSIONS

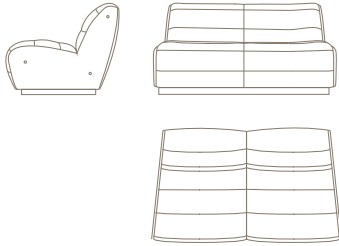
W: 165 cm | 65"

D: 100 cm | 34,4"

H: 91 cm | 35,8"

SH: 47 cm | 18,5"

NEWMAN · 2 SEAT SOFA



PRODUCT OPTIONS

UPHOLSTERY

Available in all Munna fabrics except Wild Silk.
Available in client's own material.

FOOTER FINISHES

Brass, Nickel or Copper in Polished or Brushed finishing; or in Rosewood, Ebony, Walnut, Wengé stain or lacquer in all RAL colours in matt or gloss.

FINISHES AVAILABLE ON REQUEST

Legs: Gold, Silver or Copper leaf.

COM REQUIREMENTS

FABRIC

9 mt | 354"
Based on plain fabric,
standard width 1,40 mts | 55"

LEATHER

160 square feet

DIMENSIONS

W: 150 cm | 59,1"

D: 93 cm | 36,6"

H: 75 cm | 29,5"

SH: 43 cm | 16,9"

WEIGHT

60 kg | 132 lbs

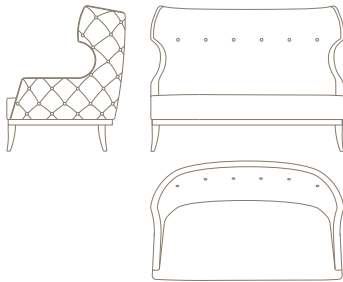
74 kg | 168 lbs (packed)

VOLUME

1,84 m³ | 64,9 cubic feet

(packed)

SOFT & CREAMY · 2 SEAT SOFA



PRODUCT OPTIONS

UPHOLSTERY

Available in all Munna fabrics except Wild Silk.
Available in client's own material.

LEG FINISHES

Available upholstered; Rosewood, Ebony or Walnut veneer,
Wengé stain or lacquer in all RAL colours, in matt or gloss.

FINISHES AVAILABLE ON REQUEST

Legs: Gold, Silver or Copper leaf.

COM REQUIREMENTS

FABRIC

12 mts | 472"
Based on plain fabric,
standard width 1,40 mts | 55"

LEATHER:

200 square feet

DIMENSIONS

W: 150 cm | 59,1"

D: 92 cm | 36,2"

H: 113 cm | 44,5"

SH: 44 cm | 17,3"

AH: 56 cm | 22"

WEIGHT

40 kg | 88 lbs

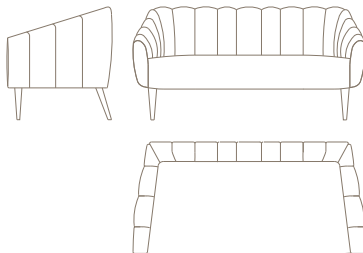
53 kg | 117 lbs (packed)

VOLUME

1,92 m³ | 67,8 cubic feet

(packed)

HOUSTON · 2 SEAT SOFA



PRODUCT OPTIONS

UPHOLSTERY

Available in all Munna fabrics except Wild Silk.
Available in client's own material.

LEG FINISHES

Available upholstered; Rosewood, Ebony or Walnut veneer,
Wengé stain or lacquer in all RAL colours, in matt or gloss.

FINISHES AVAILABLE ON REQUEST

Legs: Gold, Silver or Copper leaf.

COM REQUIREMENTS

FABRIC

8 mts | 315"
Based on plain fabric,
standard width 1,40 mts | 55"

LEATHER

130 square feet

DIMENSIONS

W: 150 cm | 59,1"

D: 75 cm | 29,5"

H: 73 cm | 28,7"

SH: 45 cm | 17,7"

AH: 60 cm | 23,6"

WEIGHT

32 kg | 71 lbs

45 kg | 99 lbs (packed)

VOLUME

1,03 m³ | 36,4 cubic feet

(packed)

MONSIEUR T · 2 SOFA

COM REQUIREMENTS

FABRIC

8 mts | 315"

Based on plain fabric,
standard width 1,40 mts | 55"

LEATHER

130 square feet

PRODUCT OPTIONS

This model is made with pipping in the silhouette. Available in all Munna fabrics, and available in client's own material.

Upholstery nails are optional:

- a) Piping
- b) Piping and Upholstery nails (silhouette)

UPHOLSTERY

Available in all Munna fabrics except Wild Silk.

Available in client's own material.

LEG FINISHES

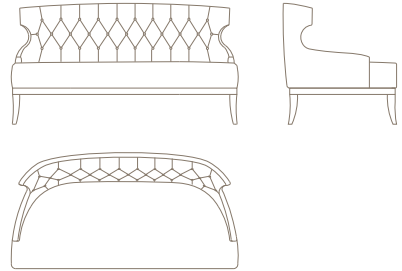
Available upholstered; Rosewood, Ebony or Walnut veneer, Wengé stain or lacquer in all RAL colours, in matt or gloss.

UPHOLSTERY NAILS

Matt or plated nickel, plated brass, bronze renaissance or old gold speckled.

FINISHES AVAILABLE ON REQUEST

Legs: Gold, Silver or Copper leaf.



VOLUME

1,25 m³ | 44,1 cubic feet
(packed)

WEIGHT

32 kg | 70,5 lbs
45 kg | 99 lbs (packed)

DIMENSIONS

W: 154 cm | 60,6"
D: 77 cm | 30,3"
H: 82 cm | 32,3"
SH: 43 cm | 16,9"
AH: 45 cm | 17,7"

BECOMES ME · 2 SEAT SOFA

FINISHES AVAILABLE ON REQUEST

Legs: Gold, Silver or Copper leaf.

COM REQUIREMENTS

FABRIC

6 mts | 236"

Based on plain fabric,
standard width 1,40 mts | 55"

LEATHER

100 square feet

PRODUCT OPTIONS

This model is made with pipping in the silhouette. Available in all Munna fabrics, and available in client's own material.

Upholstery nails are optional:

- a) Piping
- b) Upholstery nails (silhouette)
- c) Upholstery nails (silhouette and back)

UPHOLSTERY

Available in all Munna fabrics except Wild Silk.

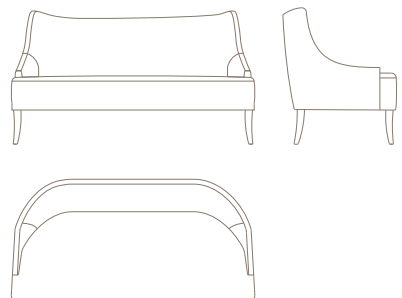
Available in client's own material.

LEG FINISHES

Available upholstered; Rosewood, Ebony or Walnut veneer, Wengé stain or lacquer in all RAL colours, in matt or gloss.

UPHOLSTERY NAILS

Matt or plated nickel, plated brass, bronze renaissance or old gold speckled.



VOLUME

1,17 m³ | 41,3 cubic feet
(packed)

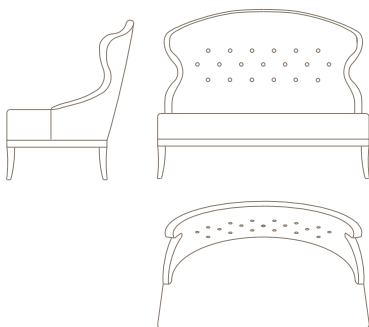
WEIGHT

25 kg | 55 lbs
32 kg | 70,5 lbs (packed)

DIMENSIONS

W: 150 cm | 59,1"
D: 76 cm | 29,9"
H: 82 cm | 32,3"
SH: 43 cm | 16,9"
AH: 50 cm | 19,7"

CANDY · 2 SEAT SOFA



PRODUCT OPTIONS

This model is made with piping in the silhouette. Available in all Munna fabrics, and available in client's own material. Upholstery nails are optional:

- a) Piping
- b) Piping and Upholstery nails (silhouette)

UPHOLSTERY

Available in all Munna fabrics except Wild Silk. Available in client's own material.

LEG FINISHES

Available upholstered; Rosewood, Ebony or Walnut veneer, Wengé stain or lacquer in all RAL colours, in matt or gloss.

UPHOLSTERY NAILS

Matt or plated nickel, plated brass, bronze renaissance or old gold speckled.

DIMENSIONS

W: 135 cm | 53,1"
D: 85 cm | 33,5"
H: 95 cm | 37,4"
SH: 44 cm | 17,3"
AH: 48 cm | 18,9"

WEIGHT

30 kg | 66 lbs
40 kg | 88 lbs (packed)

FINISHES AVAILABLE ON REQUEST

Legs: Gold, Silver or Copper leaf.

COM REQUIREMENTS

FABRIC

6,50 mts | 256"
Based on plain fabric, standard width 1,40 mts | 55"

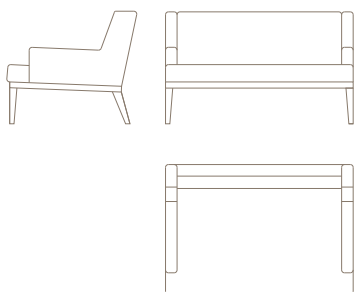
LEATHER

110 square feet

VOLUME

1,33 m³ | 47 cubic feet (packed)

PRIVATE · 2 SEAT SOFA



PRODUCT OPTIONS

UPHOLSTERY

Available in all Munna fabrics except Wild Silk. Available in client's own material.

LEG FINISHES

Available upholstered; Rosewood, Ebony or Walnut veneer, Wengé stain or lacquer in all RAL colours, in matt or gloss.

FINISHES AVAILABLE ON REQUEST

Legs: Gold, Silver or Copper leaf.

DIMENSIONS

W: 130 cm | 51,2"
D: 90 cm | 35,4"
H: 77 cm | 30,3"
SH: 42 cm | 16,5"
AH: 50 cm | 19,7"

WEIGHT

30 kg | 66 lbs
45 kg | 99 lbs (packed)

COM REQUIREMENTS

FABRIC

5,50 mts | 217"
Based on plain fabric, standard width 1,40 mts | 55"

LEATHER

90 square feet

VOLUME

1,15 m³ | 40,6 cubic feet (packed)

LIPSTICK · 2 SEAT SOFA

COM REQUIREMENTS

FABRIC

7 mts | 276"

Based on plain fabric,
standard width 1,40 mts | 55"

LEATHER

110 square feet

PRODUCT OPTIONS

This model is made with piping in the silhouette. Available in all Munna fabrics, and available in client's own material.

Upholstery nails are optional:

- a) Piping
- b) Piping and Upholstery nails (silhouette)

UPHOLSTERY

Available in all Munna fabrics except Wild Silk.

Available in client's own material.

LEG FINISHES

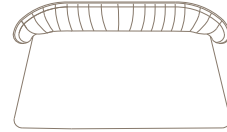
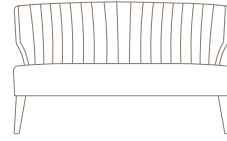
Available upholstered; Rosewood, Ebony or Walnut veneer, Wengé stain or lacquer in all RAL colours, in matt or gloss.

UPHOLSTERY NAILS

Matt or plated nickel, plated brass, bronze renaissance or old gold speckled.

FINISHES AVAILABLE ON REQUEST

Legs: Gold, Silver or Copper leaf.



VOLUME
1,01 m³ | 35,7 cubic feet
(packed)

WEIGHT
25 kg | 55 lbs
35 kg | 77 lbs (packed)

DIMENSIONS
W: 130 cm | 51,2"
D: 76 cm | 29,9"
H: 79 cm | 31,1"
SH: 44 cm | 17,3"

YES NO MAYBE SO · CONVERSATION SOFA

COM REQUIREMENTS

FABRIC

4,00 mts | 158"

Based on plain fabric,
standard width 1,40 mts | 55"

LEATHER

70 square feet

PRODUCT OPTIONS

UPHOLSTERY

Available in all Munna fabrics except Wild Silk.

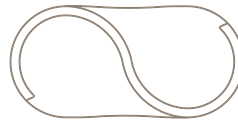
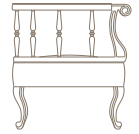
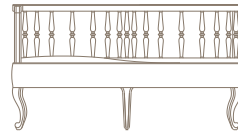
Available in client's own material.

LEG FINISHES

Lacquer in lacquer in all RAL colours, in matt or gloss.

FINISHES AVAILABLE ON REQUEST

Legs: Gold, Silver or Copper leaf.



VOLUME
0,88 m³ | 31 cubic feet
(packed)

WEIGHT
26 kg | 57 lbs
33 kg | 73 lbs (packed)

DIMENSIONS
W: 146 cm | 57,5"
D: 70 cm | 27,6"
H: 76 cm | 29,9"
SH: 45 cm | 17,7"
AH: 76 cm | 29,9"

MADELEINE · ROUND SOFA

COM REQUIREMENTS

FABRIC

9 mts | 355"

Based on plain fabric,
standard width 1,40 mts | 55"

LEATHER

145 square feet

PRODUCT OPTIONS

UPHOLSTERY

Available in all Munna fabrics except Wild Silk.

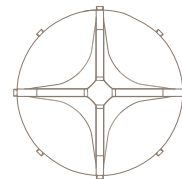
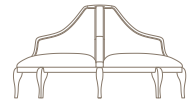
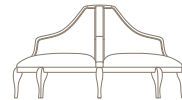
Available in client's own material.

LEG FINISHES

Available upholstered; Lacquer in lacquer in all RAL colours, in matt or gloss.

FINISHES AVAILABLE ON REQUEST

Legs: Gold, Silver or Copper leaf.

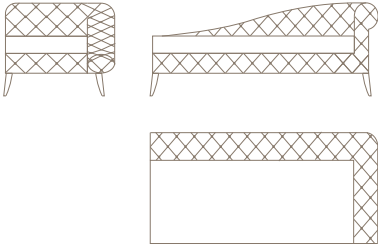


VOLUME
4,6 m³ | 162,4 cubic feet
(packed)

WEIGHT
85 kg | 187 lbs
115 kg | 253 lbs (packed)

DIMENSIONS
W: 180 cm | 70,9"
D: 180 cm | 70,9"
H: 97 cm | 38,2"
SH: 43 cm | 16,9"
AH: 63 cm | 24,8"

EMMA · CHAISE LONGUE



PRODUCT OPTIONS

UPHOLSTERY

Available in all Munna fabrics except Wild Silk.
Available in client's own material.

LEG FINISHES

Available upholstered; Rosewood, Ebony or Walnut veneer, Wengé stain or lacquer in all RAL colours, in matt or gloss.

FINISHES AVAILABLE ON REQUEST

Legs: Gold, Silver or Copper leaf.

DIMENSIONS

W: 196cm | 77,2"

D: 96 cm | 37,8"

H: 80 cm | 31,5"

SH: 52 cm | 20,5"

AH: 80 cm | 31,5"

WEIGHT

53 kg | 117 lbs

201 kg | 443 lbs (packed)

COM REQUIREMENTS

FABRIC

14 mts | 551"

Based on plain fabric,
standard width 1,40 mts | 55"

LEATHER

230 square feet

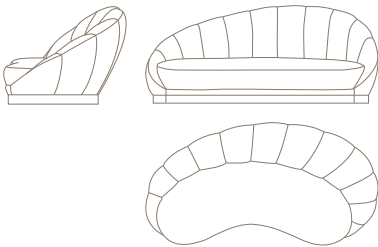
VERSION

Left or right
(left version in technical)

VOLUME

2,24 m³ | 79,1 cubic feet
(packed)

OLYMPIA · CHAISE LONGUE



PRODUCT OPTIONS

UPHOLSTERY

Available in all Munna fabrics except Wild Silk.
Available in client's own material.

FOOTER FINISHES

Available in Brass, Nickel or Copper in Polished or Brushed finishing; Rosewood, Ebony or Walnut veneer, Wengé stain or lacquer in all RAL colours, in matt or gloss.

FINISHES AVAILABLE ON REQUEST

Footer: Gold, Silver or Copper leaf.

DIMENSIONS

W: 217 cm | 85,4"

D: 118 cm | 46,5"

H: 94 cm | 37"

SH: 43 cm | 16,9"

WEIGHT

62 kg | 136,7 lbs

125 kg | 275,6 lbs (packed)

COM REQUIREMENTS

FABRIC

13 mts | 511,8"

Based on plain fabric,
standard width 1,40 mts | 55"

LEATHER

210 square feet

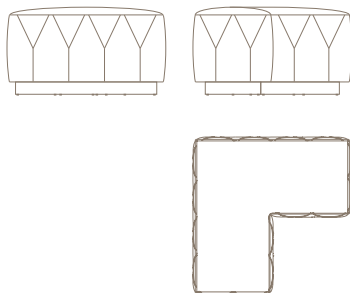
VERSION

Left or right
(right version in technical)

VOLUME

3,02 m³ | 106,6 cubic feet
(packed)

YIN YANG MODULE 1



PRODUCT OPTIONS

UPHOLSTERY

Available in all Munna's Cotton Velvet.

FOOTER FINISHES

Available in Brass, Nickel or Copper in Polished or Brushed finishing; Rosewood, Ebony or Walnut veneer, Wengé stain or lacquer in all RAL colours, in matt or gloss.

FINISHES AVAILABLE ON REQUEST

Footer: Gold, Silver or Copper leaf.

DIMENSIONS

W: 100 cm | 39,4"

D: 100 cm | 39,4"

H: 57 cm | 22,4"

SH: 57 cm | 22,4"

WEIGHT

35 kg | 77 lbs

38 kg | 84 lbs (packed)

VOLUME

0,85 m³ | 30 cubic feet
(packed)

YIN YANG MODULE 2

PRODUCT OPTIONS

UPHOLSTERY

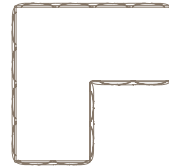
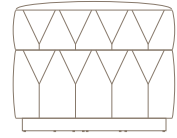
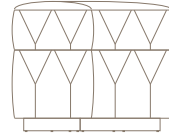
Available in all Munna's Cotton Velvet.

FOOTER FINISHES

Available in Brass, Nickel or Copper in Polished or Brushed finishing; Rosewood, Ebony or Walnut veneer, Wengé stain or lacquer in all RAL colours, in matt or gloss.

FINISHES AVAILABLE ON REQUEST

Footer: Gold, Silver or Copper leaf.



VOLUME
1,18 m³ | 41,7 cubic feet
(packed)

WEIGHT
48 kg | 106 lbs
51 kg | 112 lbs (packed)

DIMENSIONS
W: 100 cm | 39,4"
D: 100 cm | 39,4"
H: 83 cm | 32,7"

YIN YANG MODULE 3

PRODUCT OPTIONS

UPHOLSTERY

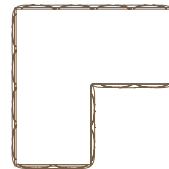
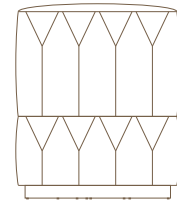
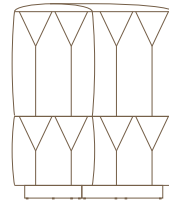
Available in all Munna's Cotton Velvet.

FOOTER FINISHES

Available in Brass, Nickel or Copper in Polished or Brushed finishing; Rosewood, Ebony or Walnut veneer, Wengé stain or lacquer in all RAL colours, in matt or gloss.

FINISHES AVAILABLE ON REQUEST

Footer: Gold, Silver or Copper leaf.



VOLUME
1,69 m³ | 59,7 cubic feet
(packed)

WEIGHT
62 kg | 137 lbs
65 kg | 143 lbs (packed)

DIMENSIONS
W: 100 cm | 39,4"
D: 100 cm | 39,4"
H: 123 cm | 48,4"

FRANÇOISE · CHAIR

COM REQUIREMENTS

FABRIC

1,5 mts | 59,1"

Based on plain fabric,
standard width 1,40 mts | 55"

LEATHER

30 square feet

PRODUCT OPTIONS

UPHOLSTERY

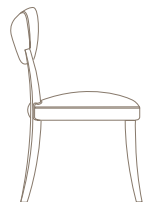
Available in all Munna fabrics except Wild Silk. Available
in client's own material.

LEG FINISHES

Available in Rosewood, Ebony veneer, solid Walnut, Wengé
stain or lacquer in all RAL colours, in matt or gloss.

FINISHES AVAILABLE ON REQUEST

Legs: Gold, Silver or Copper leaf.

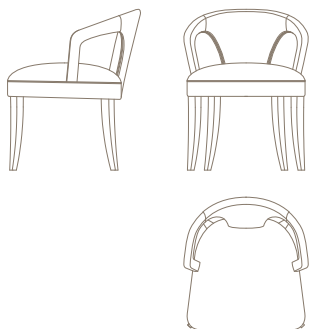


VOLUME
0,28 m³ | cubic feet
(packed)

WEIGHT
7 kg | 15 lbs
10 kg | 22 lbs (packed)

DIMENSIONS
W: 45 cm | 17,7"
D: 56 cm | 22"
H: 83 cm | 32,7"
SH: 48 cm | 18,9"

MARY Q · CHAIR



PRODUCT OPTIONS

UPHOLSTERY

Available in all Munna fabrics except Wild Silk. Available in client's own material.

LEG FINISHES

Available in Rosewood, Ebony or Walnut veneer, Wengé stain or lacquer in all RAL colours, in matt or gloss.

FINISHES AVAILABLE ON REQUEST

Legs: Gold, Silver or Copper leaf.

DIMENSIONS

W: 58 cm | 22,8"

D: 62 cm | 24,4"

H: 75 cm | 29,5"

SH: 50 cm | 19,7"

AH: 65 cm | 25,6"

WEIGHT

8 kg | 18 lbs

13 kg | 29 lbs (packed)

COM REQUIREMENTS

FABRIC

2,5 mts | 98,4"

Based on plain fabric, standard width 1,40 mts | 55"

LEATHER

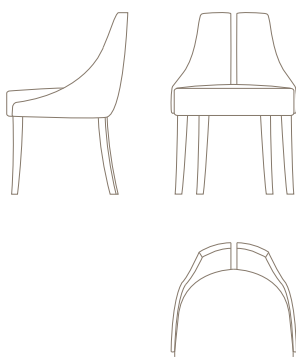
40 square feet

VOLUME

0,41 m³ | 14,5 cubic feet

(packed)

POLAIRE · CHAIR



PRODUCT OPTIONS

UPHOLSTERY

Available in all Munna fabrics except Wild Silk. Available in client's own material.

LEG FINISHES

Available upholstered, Rosewood, Ebony or Walnut veneer, Wengé stain or lacquer in all RAL colours, in matt or gloss.

FINISHES AVAILABLE ON REQUEST

Legs: Gold, Silver or Copper leaf.

DIMENSIONS

W: 56 cm | 22"

D: 54 cm | 23,1"

H: 81 cm | 31,9"

SH: 47 cm | 18,5"

WEIGHT

13 kg | 28,7 lbs

17 kg | 37,4 lbs (packed)

COM REQUIREMENTS

FABRIC

3 mts | 118"

Based on plain fabric, standard width 1,40 mts | 55"

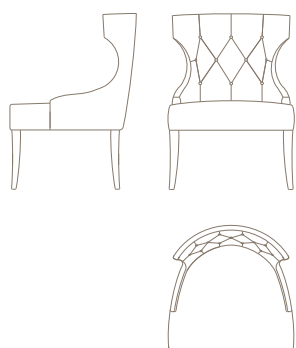
LEATHER

40 square feet

VOLUME

0,35 m³ | 12,4 cubic feet

MONSIEUR T · CHAIR



PRODUCT OPTIONS

This model is made with piping in the silhouette. Available in all Munna fabrics, and available in client's own material.

Upholstery nails are optional:

- a) Piping
- b) Piping and Upholstery nails (silhouette)

UPHOLSTERY

Available in all Munna fabrics except Wild Silk. Available in client's own material.

LEG FINISHES

Available upholstered, Rosewood, Ebony or Walnut veneer, Wengé stain or lacquer in all RAL colours, in matt or gloss.

UPHOLSTERY NAILS

Matt or plated nickel, plated brass, bronze renaissance or old gold speckled.

FINISHES AVAILABLE ON REQUEST

Legs: Gold, Silver or Copper leaf.

DIMENSIONS

W: 64 cm | 25,2"

D: 64 cm | 25,2"

H: 89 cm | 35"

SH: 45 cm | 17,7"

AH: 48 cm | 18,9"

WEIGHT

11 kg | 24,2 lbs

17 kg | 37,5 lbs (packed)

COM REQUIREMENTS

FABRIC

3,00 mts | 118"

Based on plain fabric, standard width 1,40 mts | 55"

LEATHER

55 square feet

VOLUME

0,48 m³ | 17 cubic feet

(packed)

CORSET · CHAIR

COM REQUIREMENTS

FABRIC

3,00 mts | 118"

Based on plain fabric,
standard width 1,40 mts | 55"

LEATHER

55 square feet

VOLUME

0,43 m³ | 15 cubic feet

PRODUCT OPTIONS

UPHOLSTERY

Available in all Munna fabrics except Wild Silk.

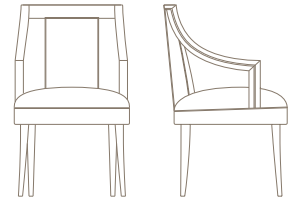
Available in client's own material.

LEG FINISHES

Available upholstered, Rosewood, Ebony or Walnut veneer,
Wengé stain or lacquer in all RAL colours, in matt or gloss.

FINISHES AVAILABLE ON REQUEST

Legs: Gold, Silver or Copper leaf.



WEIGHT

11 kg | 24 lbs

16 kg | 35 lbs (packed)

DIMENSIONS

W: 57 cm | 22,4"

D: 60 cm | 23,6"

H: 93 cm | 36,6"

SH: 53 cm | 20,8"

AH: 66 cm | 25,9"

BECOMES ME · CHAIR

COM REQUIREMENTS

FABRIC

3 mts | 118"

Based on plain fabric,
standard width 1,40 mts | 55"

LEATHER

55 square feet

VOLUME

0,72 m³ | 25,4 cubic feet
(packed)

WEIGHT

13 kg | 29 lbs

19 kg | 42 lbs (packed)

PRODUCT OPTIONS

This model is made with piping in the silhouette.

Available in all Munna fabrics, and available in client's own
material. Upholstery nails are optional:

- a) Piping
- b) Upholstery nails (silhouette)
- c) Upholstery nails (silhouette and back)

UPHOLSTERY

Available in all Munna fabrics except Wild Silk.

Available in client's own material.

LEG FINISHES

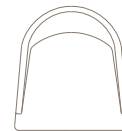
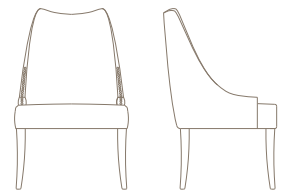
Available upholstered, Rosewood, Ebony or Walnut veneer,
Wengé stain or lacquer in all RAL colours, in matt or gloss.

UPHOLSTERY NAILS

Matt or plated nickel, plated brass, bronze renaissance or
old gold speckled.

FINISHES AVAILABLE ON REQUEST

Legs: Gold, Silver or Copper leaf.



DIMENSIONS

W: 61 cm | 24"

D: 65 cm | 25,6"

H: 96 cm | 37,8"

SH: 45 cm | 17,7"

AH: 52 cm | 20,5"

COLEMAN · CHAIR

COM REQUIREMENTS

FABRIC

1,5 mts | 59"

Based on plain fabric,
standard width 1,40 mts | 55"

LEATHER

25 square feet

VOLUME

0,38 m³ | 13,4 cubic feet
(packed)

WEIGHT

10 kg | 22 lbs

16 kg | 35 lbs (packed)

PRODUCT OPTIONS

UPHOLSTERY

Available in all Munna fabrics except Wild Silk. Available in
client's own material.

LEG FINISHES

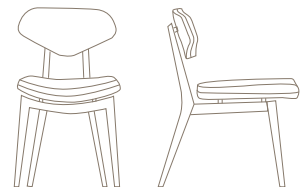
Available upholstered, Rosewood, Ebony or Walnut veneer,
Wengé stain or lacquer in all RAL colours, in matt or gloss.

METAL DETAILS

Brass, Nickel or Copper in polished or brushed.

FINISHES AVAILABLE ON REQUEST

Legs: Gold, Silver or Copper leaf.



DIMENSIONS

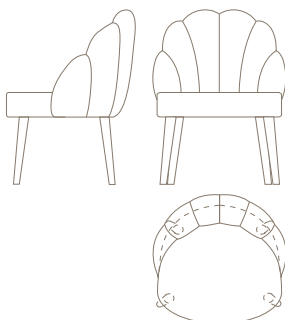
W: 48 cm | 18,9"

D: 63 cm | 24,8"

H: 81 cm | 31,8"

SH: 49 cm | 19,3"

DAISY · CHAIR



PRODUCT OPTIONS

UPHOLSTERY

Available in all Munna fabrics except Wild Silk.
Available in client's own material.

LEG FINISHES

Available upholstered, Rosewood, Ebony, Walnut, Wengé stain or lacquer in all RAL colours.

FINISHES AVAILABLE ON REQUEST

Legs: Gold, Silver or Copper leaf.

DIMENSIONS

W: 64 cm | 25,2"

D: 62 cm | 24,4"

H: 84 cm | 33,1"

SH: 48 cm | 18,9"

WEIGHT

10 kg | 22 lbs

16 kg | 35 lbs (packed)

COM REQUIREMENTS

FABRIC

3 mt | 118,1"

Based on plain fabric,
standard width 1,40 mts | 55"

LEATHER

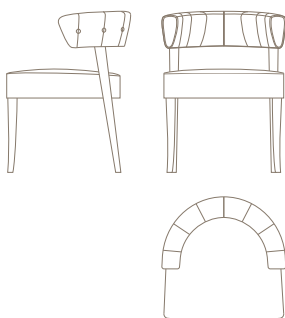
55 square feet

VOLUME

0,50 m³ | 16,4 cubic feet

(packed)

AILEEN · CHAIR



PRODUCT OPTIONS

UPHOLSTERY

Available in all Munna fabrics except Wild Silk.
Available in client's own material.

LEG FINISHES

Available in upholstered, Rosewood, Ebony or Walnut veneer, Wengé stain or lacquer in all RAL colours, in matt or gloss.

FINISHES AVAILABLE ON REQUEST

Legs: Gold, Silver or Copper leaf.

DIMENSIONS

W: 60 cm | 23,6"

D: 60 cm | 23,6"

H: 78 cm | 30,7"

SH: 50 cm | 19,7"

WEIGHT

9 kg | 19 lbs

13 kg | 28,7 lbs (packed)

COM REQUIREMENTS

FABRIC

3 mt | 118,1"

Based on plain fabric,
standard width 1,40 mts | 55"

LEATHER

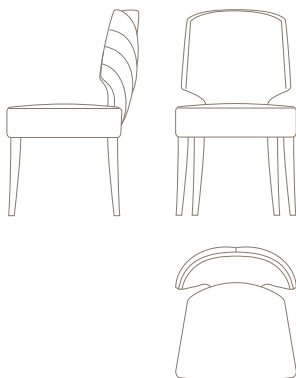
50 square feet

VOLUME

0,47 m³ | 15,4 cubic feet

(packed)

MELODY · CHAIR



PRODUCT OPTIONS

UPHOLSTERY

Available in all Munna fabrics except Wild Silk.
Available in client's own material.

LEG FINISHES

Available in upholstered, Rosewood, Ebony or Walnut veneer, Wengé stain or lacquer in all RAL colours, in matt or gloss.

FINISHES AVAILABLE ON REQUEST

Legs: Gold, Silver or Copper leaf.

DIMENSIONS

W: 54 cm | 21,2"

D: 60 cm | 23,6"

H: 92 cm | 36,2"

SH: 51 cm | 20"

WEIGHT

12 kg | 26 lbs

17 kg | 37 lbs (packed)

COM REQUIREMENTS

FABRIC

2,5 mts | 98,4"

Based on plain fabric,
standard width 1,40 mts | 55"

LEATHER

40 square feet

VOLUME

0,45 m³ | 19,4 cubic feet

(packed)

LIPSTICK · SWIVEL CHAIR

COM REQUIREMENTS

FABRIC

4,5 mt | 177,2"

Based on plain fabric,
standard width 1,40 mts | 55"

LEATHER

80 square feet

PRODUCT OPTIONS

UPHOLSTERY

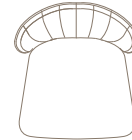
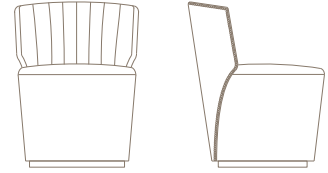
Available in all Munna fabrics except Wild Silk.

Available in client's own material.

NAILS

Matt or plated nickel, plated brass, bronze renaissance
or old gold speckled.

Also available without swivel.



VOLUME

0,44 m³ | 15,5 cubic feet
(packed)

WEIGHT

19 kg | 42 lbs
24 kg | 53 lbs (packed)

DIMENSIONS

W: 60 cm | 23,6"
D: 66 cm | 26"
H: 80 cm | 31,5"
SH: 51 cm | 20"

CHARLOTTE · BAR STOOL

COM REQUIREMENTS

FABRIC

1 mts | 39,4"

Based on plain fabric,
standard width 1,40 mts | 55"

LEATHER

20 square feet

PRODUCT OPTIONS

UPHOLSTERY

Available in all Munna fabrics except Wild Silk. Available
in client's own material.

LEG FINISHES

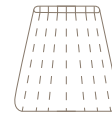
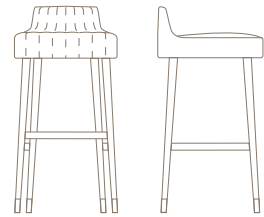
Available in solid Walnut, Wengé stain and lacquer in all
RAL colours, in matt or gloss.

METAL DETAILS

Brass, Nickel or Copper in polished or brushed.

FINISHES AVAILABLE ON REQUEST

Legs: Gold, Silver or Copper leaf.



VOLUME

0,27 m³ | 9,5 cubic feet
(packed)

WEIGHT

12 kg | 26,5 lbs
15 kg | 33 lbs (packed)

DIMENSIONS

W: 46 cm | 18,1"
D: 47 cm | 18,5"
H: 92 cm | 36,2"
SH: 80 cm | 31,5"

CHARLOTTE · COUNTER STOOL

COM REQUIREMENTS

FABRIC

1 mts | 39,4"

Based on plain fabric,
standard width 1,40 mts | 55"

LEATHER

20 square feet

PRODUCT OPTIONS

UPHOLSTERY

Available in all Munna fabrics except Wild Silk. Available
in client's own material.

LEG FINISHES

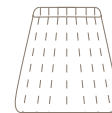
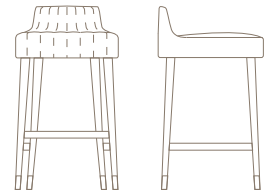
Available in solid Walnut, Wengé stain and lacquer in all
RAL colours, in matt or gloss.

METAL DETAILS

Brass, Nickel or Copper in polished or brushed.

FINISHES AVAILABLE ON REQUEST

Legs: Gold, Silver or Copper leaf.



VOLUME

0,24 m³ | 8,5 cubic feet
(packed)

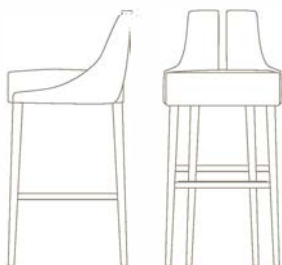
WEIGHT

7 kg | 15 lbs
12 kg | 27 lbs (packed)

DIMENSIONS

W: 46 cm | 18,1"
D: 47 cm | 18,5"
H: 82 cm | 32,3"
SH: 70 cm | 27,6"

POLAIRE · BAR STOOL



PRODUCT OPTIONS

UPHOLSTERY

Available in all Munna fabrics except Wild Silk. Available in client's own material.

LEG FINISHES

Available in solid Walnut , Wengé stain and lacquer in all RAL colours in matt or gloss.

METAL DETAILS

Brass, Nickel or Copper in polished or brushed.

FINISHES AVAILABLE ON REQUEST

Legs: Gold, Silver or Copper leaf.

DIMENSIONS

W: 51 cm | 20,1"

D: 51 cm | 20,1"

H: 106 cm | 41,7"

SH: 80 cm | 31,5"

WEIGHT

10 kg | 22 lbs

15 kg | 33 lbs (packed)

COM REQUIREMENTS

FABRIC

1,8 mts | 71"

Based on plain fabric, standard width 1,40 mts | 55"

LEATHER

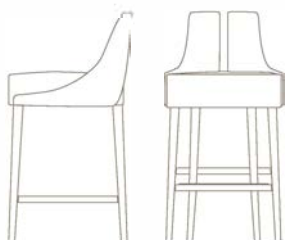
30 square feet

VOLUME

0,36 m³ | 12,7 cubic feet

(packed)

POLAIRE · COUNTER STOOL



PRODUCT OPTIONS

UPHOLSTERY

Available in all Munna fabrics except Wild Silk. Available in client's own material.

LEG FINISHES

Available in solid Walnut , Wengé stain and lacquer in all RAL colours in matt or gloss.

METAL DETAILS

Brass, Nickel or Copper in polished or brushed.

FINISHES AVAILABLE ON REQUEST

Legs: Gold, Silver or Copper leaf.

DIMENSIONS

W: 51 cm | 20,1"

D: 51 cm | 20,1"

H: 96 cm | 37,8"

SH: 70 cm | 27,6"

WEIGHT

10 kg | 22 lbs

15 kg | 33 lbs (packed)

COM REQUIREMENTS

FABRIC

1,8 mts | 71"

Based on plain fabric, standard width 1,40 mts | 55"

LEATHER

30 square feet

VOLUME

0,33 m³ | 11,7 cubic feet

(packed)

BECOMES ME · BAR STOOL

FINISHES AVAILABLE ON REQUEST

Legs: Gold, Silver or Copper leaf.

COM REQUIREMENTS FABRIC

2,50 mts | 98"

Based on plain fabric, standard width 1,40 mts | 55"

LEATHER

60 square feet

VOLUME

0,38 m³ | 13,4 cubic feet

PRODUCT OPTIONS

This model is made with pipping in the silhouette. Available in all Munna fabrics, and available in client's own material. Upholstery nails are optional:

- a) Piping
- b) Upholstery nails (silhouette)
- c) Upholstery nails (silhouette and back)

UPHOLSTERY

Available in all Munna fabrics except Wild Silk.

Available in client's own material.

LEG FINISHES

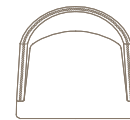
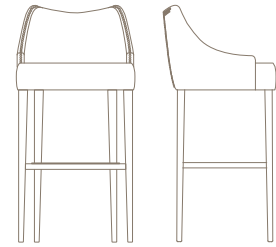
Available in Rosewood, Ebony, Walnut, Wengé stain or lacquer in all RAL colours in matt or gloss.

METAL DETAILS

Brass, Nickel or Copper in polished or brushed.

UPHOLSTERY NAILS

Matt or plated nickel, plated brass, bronze renaissance or old gold speckled.



DIMENSIONS

W: 53 cm | 20,9"

D: 50 cm | 19,7"

H: 105 cm | 41,3"

SH: 80 cm | 31,5"

AH: 82 cm | 32,3"

WEIGHT

12 kg | 26,5 lbs

18 kg | 39 lbs (packed)

BECOMES ME · COUNTER STOOL

FINISHES AVAILABLE ON REQUEST

Legs: Gold, Silver or Copper leaf.

COM REQUIREMENTS FABRIC

2,50 mts | 98"

Based on plain fabric, standard width 1,40 mts | 55"

LEATHER

60 square feet

VOLUME

0,34 m³ | 12 cubic feet

PRODUCT OPTIONS

This model is made with pipping in the silhouette. Available in all Munna fabrics, and available in client's own material. Upholstery nails are optional:

- a) Piping
- b) Upholstery nails (silhouette)
- c) Upholstery nails (silhouette and back)

UPHOLSTERY

Available in all Munna fabrics except Wild Silk.

Available in client's own material.

LEG FINISHES

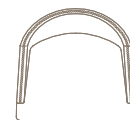
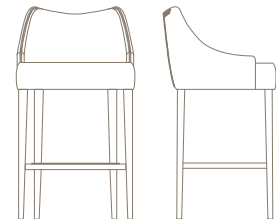
Available in Rosewood, Ebony, Walnut, Wengé stain or lacquer in all RAL colours in matt or gloss.

METAL DETAILS

Brass, Nickel or Copper in polished or brushed.

UPHOLSTERY NAILS

Matt or plated nickel, plated brass, bronze renaissance or old gold speckled.



DIMENSIONS

W: 53 cm | 20,9"

D: 50 cm | 19,7"

H: 95 cm | 37,4"

SH: 70 cm | 27,6"

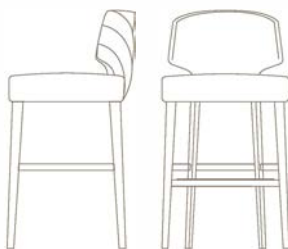
AH: 72 cm | 28,3"

WEIGHT

11 kg | 24 lbs

16 kg | 35 lbs (packed)

MELODY · BAR STOOL



PRODUCT OPTIONS

UPHOLSTERY

Available in all Munna fabrics except Wild Silk. Available in client's own material.

LEG FINISHES

Available in solid Walnut, Wengé stain or lacquer in all RAL colours, in matt or gloss.

METAL DETAILS

Brass, Nickel or Copper in polished or brushed.

FINISHES AVAILABLE ON REQUEST

Legs: Gold, Silver or Copper leaf.

COM REQUIREMENTS

FABRIC

2,50 mts | 98"

Based on plain fabric, standard width 1,40 mts | 55"

LEATHER

45 square feet

DIMENSIONS

W: 50 cm | 19,7"

D: 50 cm | 19,7"

H: 105 cm | 41,3"

SH: 80 cm | 31,5"

WEIGHT

11 kg | 24 lbs

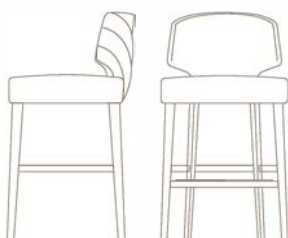
17 kg | 37 lbs (packed)

VOLUME

0,41 m³ | 14,5 cubic feet

(packed)

MELODY · COUNTER STOOL



PRODUCT OPTIONS

UPHOLSTERY

Available in all Munna fabrics except Wild Silk. Available in client's own material.

LEG FINISHES

Available in solid Walnut, Wengé stain or lacquer in all RAL colours, in matt or gloss.

METAL DETAILS

Brass, Nickel or Copper in polished or brushed.

FINISHES AVAILABLE ON REQUEST

Legs: Gold, Silver or Copper leaf.

COM REQUIREMENTS

FABRIC

2,50 mts | 98"

Based on plain fabric, standard width 1,40 mts | 55"

LEATHER

45 square feet

DIMENSIONS

W: 50 cm | 19,7"

D: 50 cm | 19,7"

H: 95 cm | 37,4"

SH: 70 cm | 27,6"

WEIGHT

11 kg | 24 lbs

17 kg | 37 lbs (packed)

VOLUME

0,3 m³ | 14,5 cubic feet

(packed)

NEWMAN · BAR STOOL



PRODUCT OPTIONS

UPHOLSTERY

Available in all Munna fabrics except Wild Silk. Available in client's own material.

LEG FINISHES

Available in Rosewood, Ebony or Walnut veneer, Wengé stain or lacquer in all RAL colours, in matt or gloss.

METAL DETAILS

Brass, Nickel or Copper in polished or brushed.

FINISHES AVAILABLE ON REQUEST

Legs: Gold, Silver or Copper leaf.

COM REQUIREMENTS

FABRIC

2,00 mts | 78,7"

Based on plain fabric, standard width 1,40 mts | 55"

LEATHER

35 square feet

DIMENSIONS

W: 40 cm | 15,7"

D: 50 cm | 19,7"

H: 102 cm | 40,2"

SH: 80 cm | 31,5"

WEIGHT

17 kg | 37 lbs

20 kg | 44 lbs (packed)

VOLUME

0,28 m³ | 9,9 cubic feet

NEWMAN · COUNTER STOOL

COM REQUIREMENTS

FABRIC

2,00 mts | 78,7"
Based on plain fabric,
standard width 1,40 mts | 55"

LEATHER

35 square feet

VOLUME

0,25 m³ | 8,8 cubic feet
(packed)

PRODUCT OPTIONS

UPHOLSTERY

Available in all Munna fabrics except Wild Silk.
Available in client's own material.

LEG FINISHES

Available in Rosewood, Ebony or Walnut veneer, Wengé
stain or lacquer in all RAL colours, in matt or gloss.

METAL DETAILS

Brass, Nickel or Copper in polished or brushed.

FINISHES AVAILABLE ON REQUEST

Legs: Gold, Silver or Copper leaf.



WEIGHT

17 kg | 37 lbs
20 kg | 44 lbs (packed)

DIMENSIONS

W: 40 cm | 15,7"
D: 50 cm | 19,7"
H: 92 cm | 36,2"
SH: 70 cm | 27,6"

OLYMPIA · BAR STOOL

COM REQUIREMENTS

FABRIC

2 mts | 78,7"
Based on plain fabric,
standard width 1,40 mts | 55"

LEATHER

30 square feet

VOLUME

0,49 m³ | 17,3 cubic feet
(packed)

PRODUCT OPTIONS

UPHOLSTERY

Available in all Munna fabrics except Wild Silk.
Available in client's own material.

LEG FINISHES

Available in solid Walnut, Wengé stain or lacquer in all
RAL colours, in matt or gloss.

RING FINISHES

Brass, Nickel or Copper in polished or brushed.

FINISHES AVAILABLE ON REQUEST

Gold, Silver or Copper leaf.



WEIGHT

10 kg | 22 lbs
13 kg | 29 lbs (packed)

DIMENSIONS

W: 58 cm | 22,8"
D: 55 cm | 21,7"
H: 100 cm | 39,4"
SH: 80 cm | 31,5"

OLYMPIA · COUNTER STOOL

COM REQUIREMENTS

FABRIC

2 mts | 78,7"
Based on plain fabric,
standard width 1,40 mts | 55"

LEATHER

30 square feet

VOLUME

0,44 m³ | 15,5 cubic feet
(packed)

PRODUCT OPTIONS

UPHOLSTERY

Available in all Munna fabrics except Wild Silk.
Available in client's own material.

LEG FINISHES

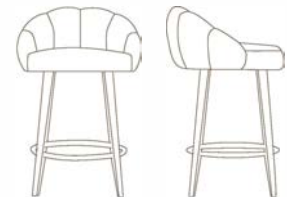
Available in solid Walnut, Wengé stain or lacquer in all
RAL colours, in matt or gloss.

RING FINISHES

Brass, Nickel or Copper in polished or brushed.

FINISHES AVAILABLE ON REQUEST

Legs: Gold, Silver or Copper leaf.



WEIGHT

10 kg | 22 lbs
13 kg | 29 lbs (packed)

DIMENSIONS

W: 58 cm | 22,8"
D: 55 cm | 21,7"
H: 90 cm | 39,4"
SH: 70 cm | 27,5"

FRINGES · BAR STOOL



PRODUCT OPTIONS

UPHOLSTERY

Available in all Munna fabrics except Wild Silk, Leather and Classic Leather. Available in client's own material.

LEG FINISHES

Available in solid Walnut, Wengé stain or lacquer in all RAL colours, in matt or gloss.

FINISHES AVAILABLE ON REQUEST

Legs: Gold, Silver or Copper leaf

FRINGES

Available in all Munna fringes. Not available in client's own material

DIMENSIONS

W: 57 cm | 22,4"

D: 54 cm | 21,3"

H: 100 cm | 39,4"

SH: 80 cm | 31,5"

WEIGHT

14 kg | 30 lbs

17 kg | 37 lbs (packed)

COM REQUIREMENTS

FABRIC

3 mt | 118,1"

Based on plain fabric, standard width 1,40 mts | 55"

VOLUME

0,42 m³ | 13,8 cubic feet

(packed)

FRINGES · COUNTER STOOL



PRODUCT OPTIONS

UPHOLSTERY

Available in all Munna fabrics except Wild Silk, Leather and Classic Leather. Available in client's own material.

LEG FINISHES

Available in solid Walnut, Wengé stain or lacquer in all RAL colours, in matt or gloss.

FINISHES AVAILABLE ON REQUEST

Legs: Gold, Silver or Copper leaf

FRINGES

Available in all Munna fringes. Not available in client's own material

DIMENSIONS

W: 57 cm | 22,4"

D: 54 cm | 21,3"

H: 90 cm | 35,4"

SH: 70 cm | 27,5"

WEIGHT

14 kg | 30 lbs

17 kg | 37 lbs (packed)

COM REQUIREMENTS

FABRIC

3 mt | 118,1"

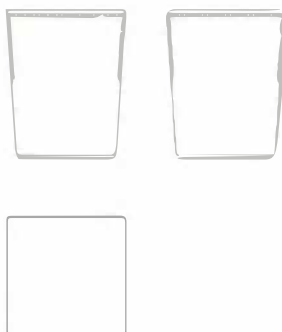
Based on plain fabric, standard width 1,40 mts | 55"

VOLUME

0,42 m³ | 13,8 cubic feet

(packed)

IN BETWEEN · STOOL



PRODUCT OPTIONS

UPHOLSTERY

Available in all Munna fabrics except Wild Silk. Available in client's own material.

UPHOLSTERY NAILS

Matt or plated nickel, plated brass, bronze renaissance or old gold speckled.

DIMENSIONS

W: 40 cm | 15,7"

D: 40 cm | 15,7"

H: 50 cm | 19,7"

WEIGHT

10 kg | 22 lbs

12 kg | 26,4 lbs (packed)

COM REQUIREMENTS

FABRIC

1,50 mts | 59"

Based on plain fabric, standard width 1,40 mts | 55"

LEATHER

40 square feet

VOLUME

0,13 m³ | 4,6 cubic feet

(packed)

IN BETWEEN · 140 BENCH

COM REQUIREMENTS

FABRIC

4 mts | 157,5"
Based on plain fabric,
standard width 1,40 mts | 55"

LEATHER

70 square feet

PRODUCT OPTIONS

This model is made with pipping in the silhouette. Available in all Munna fabrics, and available in client's own material.

Upholstery nails are optional:

- a) Piping
- b) Piping and Upholstery nails (silhouette)

UPHOLSTERY

Available in all Munna fabrics except Wild Silk. Available in client's own material.

UPHOLSTERY NAILS

Matt or plated nickel, plated brass, bronze renaissance or old gold speckled.



VOLUME

0,45 m³ | 15,9 cubic feet
(packed)

WEIGHT

27 kg | 59,5 lbs
32 kg | 70,5 lbs (packed)

DIMENSIONS

W: 140 cm | 55,1"
D: 41 cm | 16,1"
H: 48 cm | 18,9"

CHAMOIS · STOOL

COM REQUIREMENTS

FABRIC

2,00 mts | 78,7"
Based on plain fabric,
standard width 1,40 mts | 55"

LEATHER

40 square feet

PRODUCT OPTIONS

UPHOLSTERY

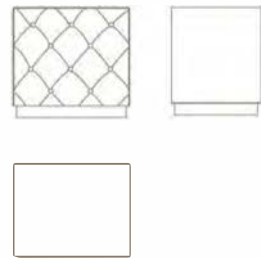
Available in all Munna fabrics except Wild Silk. Available in client's own material.

FOOTER FINISHES

Available in Rosewood, Ebony or Walnut veneer, Wengé stain or lacquer in all RAL colours, in matt or gloss.

FINISHES AVAILABLE ON REQUEST

Footer: Gold, Silver or Copper leaf



VOLUME

0,16 m³ | 5,7 cubic feet
(packed)

WEIGHT

10 kg | 22 lbs
13 kg | 29 lbs (packed)

DIMENSIONS

W: 52 cm | 20,5"
D: 42 cm | 16,5"
H: 49 cm | 19,3"

FRINGES · STOOL

COM REQUIREMENTS

FABRIC

2 mt | 78,7"
Based on plain fabric,
standard width 1,40 mts | 55"

PRODUCT OPTIONS

UPHOLSTERY

Available in all Munna fabrics except Wild Silk, Leather and Classic

Leather: Available in client's own material.

FRINGES
Available in all Munna fringes. Not available in client's own material



VOLUME

0,12 m³ | 3,9 cubic feet
(packed)

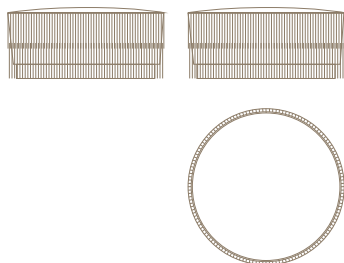
WEIGHT

9 kg | 19 lbs
11 kg | 24 lbs (packed)

DIMENSIONS

W: 50 cm | 19,7"
D: 50 cm | 19,7"
H: 50 cm | 19,7"

FRINGES · 110 STOOL



PRODUCT OPTIONS

UPHOLSTERY

Available in all Munna fabrics except Wild Silk, Leather and Classic Leather.

Available in client's own material.

FRINGES

Available in all Munna fringes. Not available in client's own material

DIMENSIONS

W: 110 cm | 43,3"

D: 110 cm | 43,3"

H: 50 cm | 19,7"

WEIGHT

41 kg | 90,4 lbs

51 kg | 112,4 lbs (packed)

COM REQUIREMENTS

FABRIC

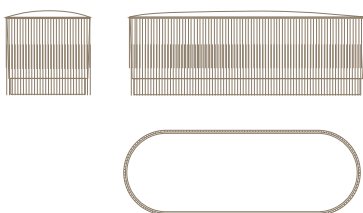
5 mts | 196,9"

Based on plain fabric, standard width 1,40 mts | 55"

VOLUME

0,8 m³ | 28,3 cubic feet (packed)

FRINGES · 140 BENCH



PRODUCT OPTIONS

UPHOLSTERY

Available in all Munna fabrics except Wild Silk, Leather and Classic Leather.

Available in client's own material.

FRINGES

Available in all Munna fringes. Not available in client's own material

DIMENSIONS

W: 140 cm | 55,1"

D: 50 cm | 19,7"

H: 50 cm | 19,7"

WEIGHT

35 kg | 77,2 lbs

40 kg | 88,2 lbs (packed)

COM REQUIREMENTS

FABRIC

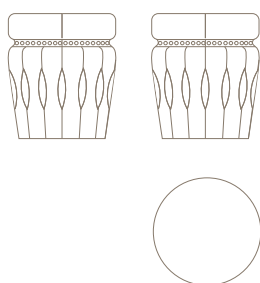
4,5 mts | 177,2"

Based on plain fabric, standard width 1,40 mts | 55"

VOLUME

0,54 m³ | 19,1 cubic feet (packed)

BELLE DE JOUR · STOOL



PRODUCT OPTIONS

UPHOLSTERY

Available in all Munna fabrics except Wild Silk.

Available in client's own material.

UPHOLSTERY NAILS

Matt or plated nickel, plated brass, bronze renaissance or old gold speckled.

DIMENSIONS

W: 43 cm | 16,9"

D: 43 cm | 16,9"

H: 50 cm | 19,7"

WEIGHT

9 kg | 20 lbs

11 kg | 24 lbs (packed)

COM REQUIREMENTS

FABRIC

2,50 mts | 98,4"

Based on plain fabric, standard width 1,40 mts | 55"

LEATHER

40 square feet

VOLUME

0,14 m³ | 4,9 cubic feet (packed)

MELLOW · 50 STOOL

COM REQUIREMENTS

FABRIC:

2,50 mts | 98"

Based on plain fabric,
standard width 1,40 mts | 55"

LEATHER:

40 square feet

VOLUME

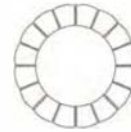
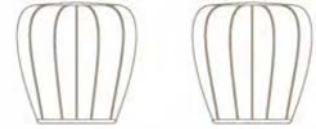
0,11 m³ | 3,89 cubic feet
(packed)

PRODUCT OPTIONS

UPHOLSTERY

Available in all Munna fabrics except Wild Silk.

Available in client's own material.



WEIGHT

9 kg | 20 lbs
12 kg | 26 lbs (packed)

DIMENSIONS

W: 50 cm | 19,7"
D: 50 cm | 19,7"
H: 50 cm | 19,7"

MELLOW · 70 STOOL

COM REQUIREMENTS

FABRIC

4 mt | 157"

Based on plain fabric,
standard width 1,40 mts | 55"

LEATHER

65 square feet

VOLUME

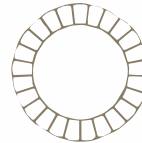
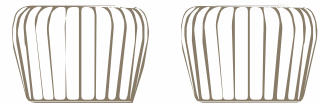
0,32 m³ | 10,4 cubic feet
(packed)

PRODUCT OPTIONS

UPHOLSTERY

Available in all Munna fabrics except Wild Silk.

Available in client's own material.



WEIGHT

15 kg | 33 lbs
18 kg | 39 lbs (packed)

DIMENSIONS

W: 70cm | 27,6"
D: 70 cm | 27,6"
H: 50 cm | 19,7"

MELLOW · 140 BENCH

COM REQUIREMENTS

FABRIC

5 mt | 197"

Based on plain fabric,
standard width 1,40 mts | 55"

LEATHER

80 square feet

VOLUME

0,58 m³ | 19 cubic feet
(packed)

PRODUCT OPTIONS

UPHOLSTERY

Available in all Munna fabrics except Wild Silk.

Available in client's own material.



WEIGHT

26 kg | 57 lbs
30 kg | 66 lbs (packed)

DIMENSIONS

W: 140 cm | 55,1"
D: 50 cm | 19,7"
H: 53 cm | 20,9"

JEANE · STOOL



PRODUCT OPTIONS

UPHOLSTERY

Available in all Munna fabrics except Wild Silk.
Available in client's own material.

METAL DETAILS

Brass, Nickel or Copper in polished or brushed.

DIMENSIONS

W: 53 cm | 20,9"

D: 53 cm | 20,9"

H: 45 cm | 17,7"

WEIGHT

14 kg | 31 lbs

17 kg | 37,5 lbs (packed)

COM REQUIREMENTS

FABRIC

2 mts | 78,7"

Based on plain fabric,
standard width 1,40 mts | 55"

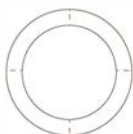
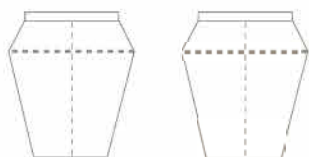
LEATHER

35 square feet

VOLUME

0,18 m³ | 6,4 cubic feet
(packed)

AVA · STOOL



PRODUCT OPTIONS

UPHOLSTERY

Available in all Munna fabrics except Wild Silk.
Available in client's own material.

METAL DETAILS

Brass, Nickel or Copper in polished or brushed.

DIMENSIONS

W: 45 cm | 17,7"

D: 45 cm | 17,7"

H: 52 cm | 20,5"

WEIGHT

8 kg | 17,6 lbs

11 kg | 24,3 lbs (packed)

COM REQUIREMENTS FABRIC

2 mts | 78,7"

Based on plain fabric, standard
width 1,40 mts | 55"

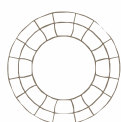
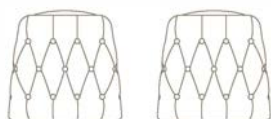
LEATHER

40 square feet

VOLUME

0,15 m³ | 5,3 cubic feet
(packed)

MISS FEET · STOOL



PRODUCT OPTIONS

UPHOLSTERY

Available in all Munna fabrics except Wild Silk.
Available in client's own material.

DIMENSIONS

W: 49 cm | 19,3"

D: 49 cm | 19,3"

H: 47 cm | 18,5"

WEIGHT

12 kg | 27 lbs

15 kg | 33 lbs (packed)

COM REQUIREMENTS

FABRIC

2 mts | 79"

Based on plain fabric,
standard width 1,40 mts | 55"

LEATHER

40 square feet

VOLUME

0,17 m³ | 6 cubic feet
(packed)

MISS FEET · 40 COFFEE TABLE

COM REQUIREMENTS

FABRIC

2,00 mts | 79"
Based on plain fabric,
standard width 1,40 mts | 55"

LEATHER

40 square feet

VOLUME

0,18 m³ | 6,4 cubic feet
(packed)

WEIGHT

12 kg | 27 lbs
16 kg | 35 lbs (packed)

DIMENSIONS

W: 50 cm | 19,7"
D: 50 cm | 19,7"
Ht: 49 cm | 19,3"

PRODUCT OPTIONS

UPHOLSTERY

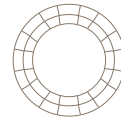
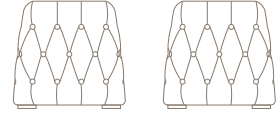
Available in all Munna fabrics except Wild Silk.
Available in client's own material.

TOP FINISHES

Upholstered or in Rosewood, Ebony or Walnut
veneer, Wengé stain or lacquer in all RAL colours,
in matt or gloss.

FINISHES AVAILABLE ON REQUEST

Top: Gold, Silver or Copper leaf



MISS FEET · 60 COFFEE TABLE

COM REQUIREMENTS

FABRIC

2,50 mts | 98"
Based on plain fabric,
standard width 1,40 mts | 55"

LEATHER

50 square feet

VOLUME

0,31 m³ | 10,9 cubic feet
(packed)

WEIGHT

16 kg | 35 lbs
19 kg | 42 lbs (packed)

DIMENSIONS

W: 67 cm | 26,4"
D: 67 cm | 26,4"
H: 49 cm | 19,3"

PRODUCT OPTIONS

UPHOLSTERY

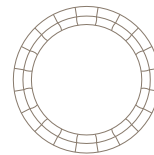
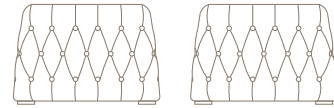
Available in all Munna fabrics except Wild Silk.
Available in client's own material.

TOP FINISHES

Upholstered or in Rosewood, Ebony or Walnut
veneer, Wengé stain or lacquer in all RAL colours,
in matt or gloss.

FINISHES AVAILABLE ON REQUEST

Top: Gold, Silver or Copper leaf



EMPIRE · FOLDING SCREEN

COM REQUIREMENTS

FABRIC

9,00 mts | 354"
Based on plain fabric,
standard width 1,40 mts | 55"

LEATHER

150 square feet

VOLUME

0,51 m³ | 18 cubic feet
(packed)

WEIGHT

50 kg | 110 lbs
75 kg | 165 lbs (packed)

DIMENSIONS

W: 212 cm | 83,5"
D: 5 cm | 2"
H: 201 cm | 79,1"

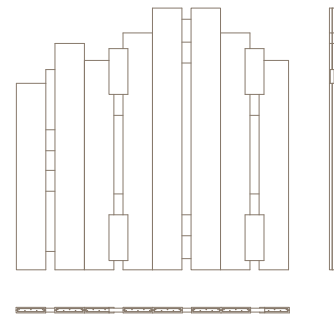
Available in all Munna fabrics except Wild Silk.
Available in client's own material.

LEAF FINISHES

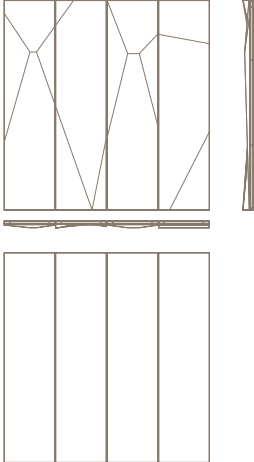
Gold, Silver or Copper leaf.

METAL DETAILS

Brass, Nickel or Copper, in polished or brushed
finishing.



LET'S PLAY · FOLDING SCREEN



PRODUCT OPTIONS

UPHOLSTERY

Fabric: Only available in Wild Silk fabric

Not available in client's own material

METAL DETAILS

Brass or Nickel in Polished or Brushed finishing.

FINISHES AVAILABLE ON REQUEST

Gold, Silver or Copper leaf.

DIMENSIONS

W: 195 cm | 76,8"

D: 8 cm | 3,1"

H: 200 cm | 78,7"

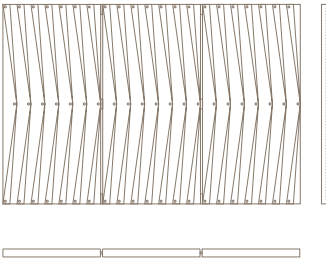
VOLUME

0,53 m³ | 18,7 cubic feet
(packed)

WEIGHT

60kg | 132lbs
84 kg | 185 lbs (packed)

HIDE & SEEK · FOLDING SCREEN · 3 PANELS



PRODUCT OPTIONS

UPHOLSTERY

Only available in all Munna cotton satin fabric.

Not available in client's own material.

UPHOLSTERY NAILS

Matt or plated nickel, plated brass, bronze renaissance or old gold speckled.

METAL DETAILS

Brass or Nickel in Polished or Brushed finishing.

DIMENSIONS

W: 156 cm | 61,4"

D: 4 cm | 1,6"

H: 101 cm | 39,8"

WEIGHT

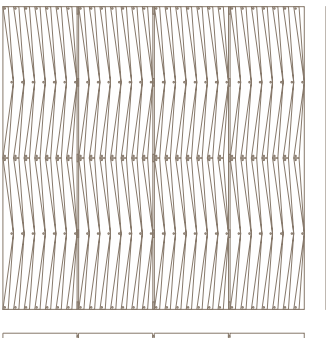
21 kg | 46 lbs

24 kg | 52,9 lbs (packed)

VOLUME

0,13 m³ | 4,6 cubic feet
(packed)

HIDE & SEEK · FOLDING SCREEN · 4 PANELS



PRODUCT OPTIONS

UPHOLSTERY

Only available in all Munna cotton satin fabric.

Not available in client's own material.

UPHOLSTERY NAILS

Matt or plated nickel, plated brass, bronze renaissance or old gold speckled.

METAL DETAILS

Brass or Nickel in Polished or Brushed finishing.

DIMENSIONS

W: 199 cm | 78,3"

D: 4 cm | 1,6"

H: 200 cm | 78,7"

WEIGHT

40 kg | 88 lbs

86 kg | 190 lbs (packed)

VOLUME

0,45 m³ | 15,9 cubic feet
(packed)

GOLDEN EYE · FOLDING SCREEN

COM REQUIREMENTS

FABRIC

9,00 mts | 354"
Based on plain fabric,
standard width 1,40 mts | 55"

LEATHER

150 square feet

VOLUME

0,58 m³ | 20,5 cubic feet
(packed)

PRODUCT OPTIONS

UPHOLSTERY

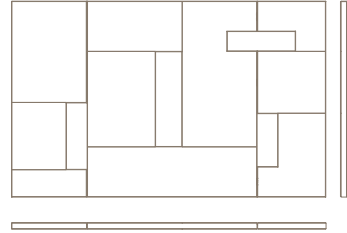
Available in all Munna fabrics except Wild Silk.
Available in client's own material.

METAL DETAILS

Brass, Nickel or Copper, in polished or brushed
finishing.

DIMENSIONS

W: 236cm | 92,9"
D: 5 cm | 2"
H: 147 cm | 57,9"



JOSEPHINE · M BED

COM REQUIREMENTS FABRIC

Body: 20 mt | 787"*
Piping: 4 mt | 157"*
*Only if the pipping colour is
different from the body colour
Based on plain fabric, standard
width 1,40 mts | 55"

LEATHER

Body: 320 square feet
Piping: 65 square feet

VOLUME

3,29m³ | 116,1 cubic feet
(packed)

PRODUCT OPTIONS

UPHOLSTERY

Available in all Munna fabrics except Wild Silk.
Available in client's own material.

WEIGHT

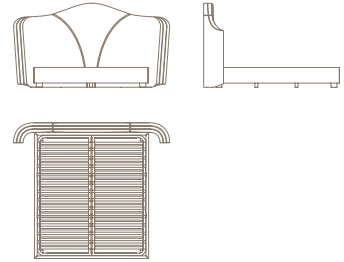
115 kg | 253 lbs
390 kg | 859 lbs (packed)

DIMENSIONS

W: 260 cm | 102,4"
D: 226 cm | 88,9"
H: 140 cm | 55,1"

FITS MATTRESS

Options available in 160x200,
180 x 200, 200 x 200 cm



JOSEPHINE · L BED

COM REQUIREMENTS FABRIC

Body: 26 mt | 1023"*
Piping: 4 mt | 157"*
*Only if the pipping colour is
different from the body colour
Based on plain fabric, standard
width 1,40 mts | 55"

LEATHER

Body: 410 square feet
Piping: 65 square feet

VOLUME

5,04 m³ | 177,9 cubic feet
(packed)

PRODUCT OPTIONS

UPHOLSTERY

Available in all Munna fabrics except Wild Silk.
Available in client's own material.

WEIGHT

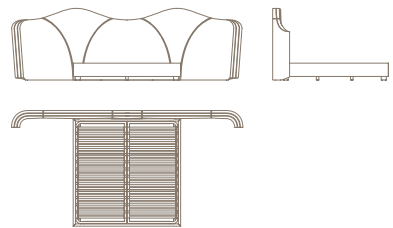
148 kg | 326 lbs
600 kg | 1323 lbs (packed)

DIMENSIONS

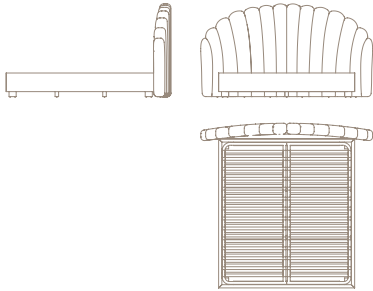
W: 450 cm | 177,2"
D: 226 cm | 88,9"
H: 140 cm | 55,1"

FITS MATTRESS

Options available in 160x200,
180 x 200, 200 x 200 cm



DAISY · M BED



PRODUCT OPTIONS

UPHOLSTERY

Available in all Munna fabrics except Wild Silk.
Available in client's own material

DIMENSIONS

W: 240 cm | 94,5"
D: 230 cm | 90,5"
H: 130 cm | 51,2"

FITS MATTRESS

Options available in 160x200,
180 x 200, 200 x 200 cm

WEIGHT

120kg | 264 lbs
380 kg | 838 lbs (packed)

COM REQUIREMENTS

FABRIC

Body: 15 mt | 590,5"*
Based on plain fabric, standard
width 1,40 mts | 55"

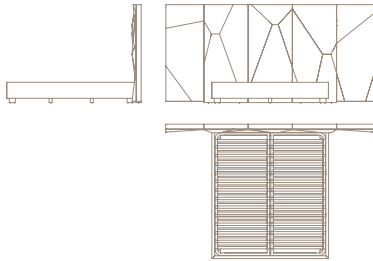
LEATHER

Body: 250 square feet

VOLUME

2,68 m³ | 94,6 cubic feet
(packed)

LET'S PLAY · M BED



PRODUCT OPTIONS

UPHOLSTERY

Available in all Munna fabrics except Wild Silk.
Available in client's own material

DIMENSIONS

W: 340 cm | 134"
D: 220 cm | 86,7"
H: 160 cm | 63"

FITS MATTRESS

Options available in 160x200,
180 x 200, 200 x 200 cm

WEIGHT

120kg | 264 lbs
380 kg | 838 lbs (packed)

COM REQUIREMENTS

FABRIC

Body: 19 mt | 748"*
Based on plain fabric, standard
width 1,40 mts | 55"

LEATHER

Body: 320 square feet

VOLUME

3,73 m³ | 131,7 cubic feet
(packed)

CONCEPTUAL PHOTOS - INÉS D'OREY



HOME DEKOR

— fashion furniture —

www.home-dekor.com