



HOME DEKOR

fashion furniture



ZIP COLLECTION

www.home-dekor.com

Armchair

edeestudio

2015

With a lightweight yet comfortable design, mid-height back, tailored arms, and zippered binding, Zip seating range is ideal for both residential and commercial spaces. Its round arms offer maximum comfort. With an engraved wooden base, Zip has been designed by edeestudio and is produced in different options: armchair, 2 and 3 seater sofas, which allow different layout alternatives according to the space.

Zip armchair was nominated to the German Design Awards 2016.

Esther Albert and Eduardo Alcón are edeestudio, a design studio based in Valencia and established in late 2008. Their job is to contribute innovative and original ideas, but also functional and aesthetic which comprehend all of the manufacturing processes of a project. From a multidisciplinary background and training, they work together in different fields: industrial, graphic, multimedia and interior design.





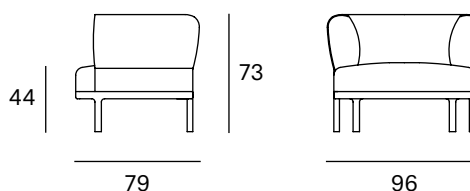
Ref: 822000

Materials

SEAT: Frame of wood covered by rubber polyurethane foam D. 32 kg and Fiber of 150 gr.

BACK: Structure with steel rod covered by rubber polyurethane foam D. 32 kg and Fiber of 150 gr.

LEGS: Beech wood. Natural and black.

Dimensions**Packaging**

Measures	101x84x78	The product is delivered assembled.
Weight	36 kg	
Volume	0,65 m ³	
Boxes	1 box	

ORIGIN 100% Made in Spain**PRODUCTION TIME** 4 weeks**WARRANTY** 5 years

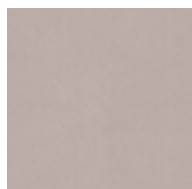
There is a five-year warranty against manufacturing defects (materials and workmanship). Wear and tear and damage to the product are not covered by this warranty. User claims under this warranty must be submitted to the distributor of the product.

Finishes

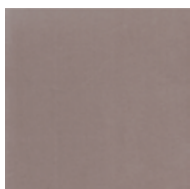
MADE TO ORDER

Upholstery Selection Blasco&Vila

SOL Collection



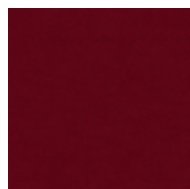
Blossom



Steel



Ocre



Scarlet

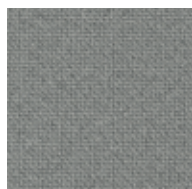


Blue

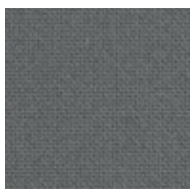


Turtle

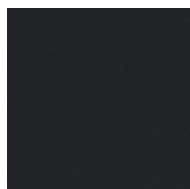
MAR Collection



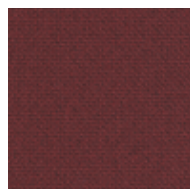
60112



60110



60111



64196



66170



68182

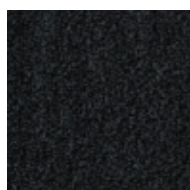
BIO Collection



Ivory



Steel

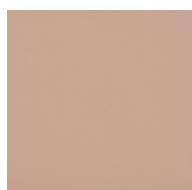


Onyx



Forest

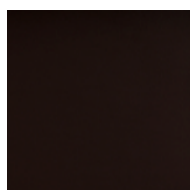
ECO Collection



Lotus



Cognac



Mocca



Schwarz

CUSTOM Endless customisation

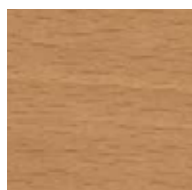
We can customise the product with any other upholstery:

Kvadrat
Gabriel
Camira
Sunbrella
Spradling
Crevin
etc.

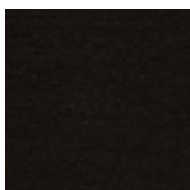
Fabric needed to upholster the product:

4,00 metres

Beech Wood

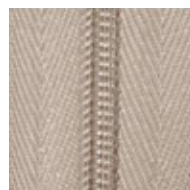


Natural

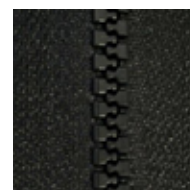


Black

Zip



Beige



Black

2 seater sofa

edeestudio

2015

With a lightweight yet comfortable design, mid-height back, tailored arms, and zippered binding, Zip seating range is ideal for both residential and commercial spaces. Its round arms offer maximum comfort. With an engraved wooden base, Zip has been designed by edeestudio and is produced in different options: armchair, 2 and 3 seater sofas, which allow different layout alternatives according to the space.

Esther Albert and Eduardo Alcón are edeestudio, a design studio based in Valencia and established in late 2008. Their job is to contribute innovative and original ideas, but also functional and aesthetic which comprehend all of the manufacturing processes of a project. From a multidisciplinary background and training, they work together in different fields: industrial, graphic, multimedia and interior design.





Ref: 622003

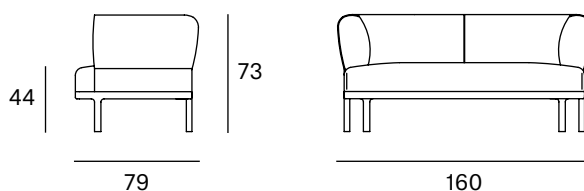
Materials

SEAT: Frame of wood covered by rubber polyurethane foam D. 32 kg and Fiber of 150 gr.

BACK: Structure with steel rod covered by rubber polyurethane foam D. 32 kg and Fiber of 150 gr.

LEGS: Beech wood. Natural and black.

Dimensions



Packaging

Measures	165x84x78	The product is delivered assembled.
Weight	58 kg	
Volume	1,08 m ³	
Boxes	1 box	

ORIGIN 100% Made in Spain

PRODUCTION TIME 4 weeks

WARRANTY 5 years

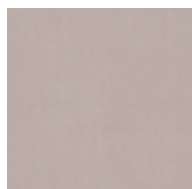
There is a five-year warranty against manufacturing defects (materials and workmanship). Wear and tear and damage to the product are not covered by this warranty. User claims under this warranty must be submitted to the distributor of the product.

Finishes

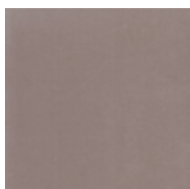
MADE TO ORDER

Upholstery Selection Blasco&Vila

SOL Collection



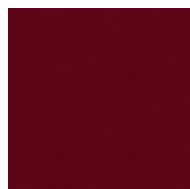
Blossom



Steel



Ocre



Scarlet

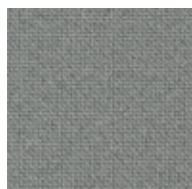


Blue

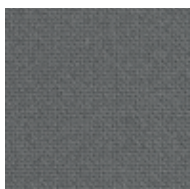


Turtle

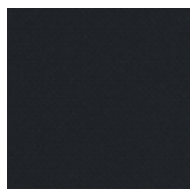
MAR Collection



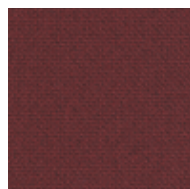
60112



60110



60111



64196



66170



68182

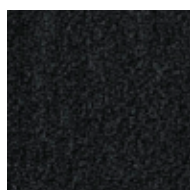
BIO Collection



Ivory



Steel

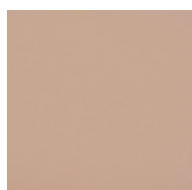


Onyx



Forest

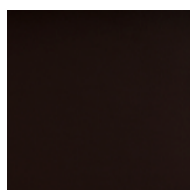
ECO Collection



Lotus



Cognac



Mocca



Schwarz

CUSTOM Endless customisation

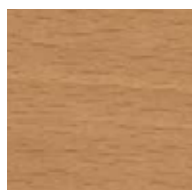
We can customise the product with any other upholstery:

Kvadrat
Gabriel
Camira
Sunbrella
Spradling
Crevin
etc.

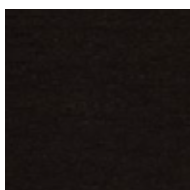
Fabric needed to upholster the product:

7,00 metres

Beech Wood

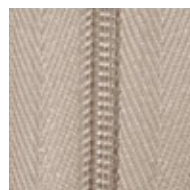


Natural

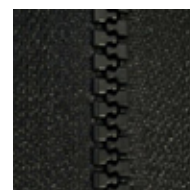


Black

Zip



Beige



Black

3 seater sofa

edeestudio

2015

With a lightweight yet comfortable design, mid-height back, tailored arms, and zippered binding, Zip seating range is ideal for both residential and commercial spaces. Its round arms offer maximum comfort. With an engraved wooden base, Zip has been designed by edeestudio and is produced in different options: armchair, 2 and 3 seater sofas, which allow different layout alternatives according to the space.

Esther Albert and Eduardo Alcón are edeestudio, a design studio based in Valencia and established in late 2008. Their job is to contribute innovative and original ideas, but also functional and aesthetic which comprehend all of the manufacturing processes of a project. From a multidisciplinary background and training, they work together in different fields: industrial, graphic, multimedia and interior design.





Ref: 622002

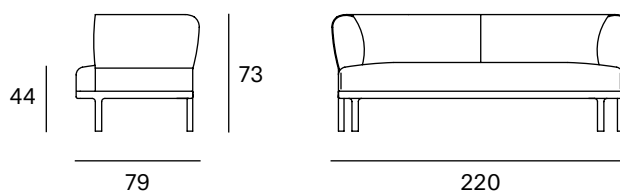
Materials

SEAT: Frame of wood covered by rubber polyurethane foam D. 32 kg and Fiber of 150 gr.

BACK: Structure with steel rod covered by rubber polyurethane foam D. 32 kg and Fiber of 150 gr.

LEGS: Beech wood. Natural and black.

Dimensions



Packaging

Measures	225x84x78	The product is delivered assembled.
Weight	64 kg	
Volume	1,47 m ³	
Boxes	1 box	

ORIGIN 100% Made in Spain

PRODUCTION TIME 4 weeks

WARRANTY 5 years

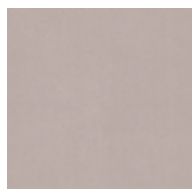
There is a five-year warranty against manufacturing defects (materials and workmanship). Wear and tear and damage to the product are not covered by this warranty. User claims under this warranty must be submitted to the distributor of the product.

Finishes

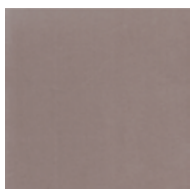
MADE TO ORDER

Upholstery Selection Blasco&Vila

SOL Collection



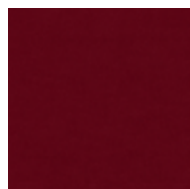
Blossom



Steel



Ocre



Scarlet

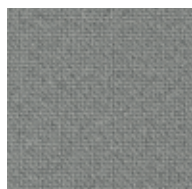


Blue

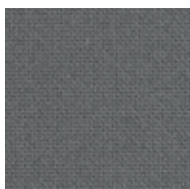


Turtle

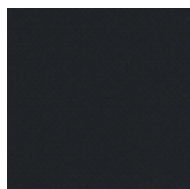
MAR Collection



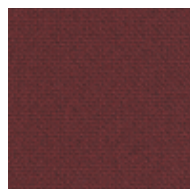
60112



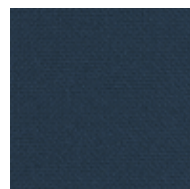
60110



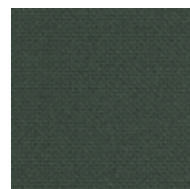
60111



64196



66170



68182

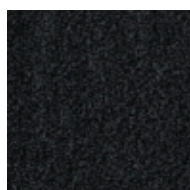
BIO Collection



Ivory



Steel

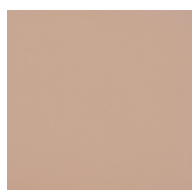


Onyx

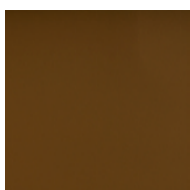


Forest

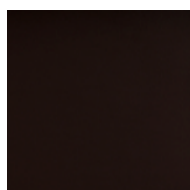
ECO Collection



Lotus



Cognac



Mocca



Schwarz

CUSTOM Endless customisation

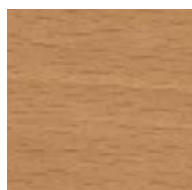
We can customise the product with any other upholstery:

Kvadrat
Gabriel
Camira
Sunbrella
Spradling
Crevin
etc.

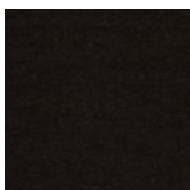
Fabric needed to upholster the product:

9,00 metres

Beech Wood

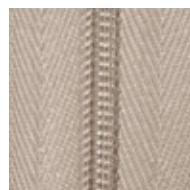


Natural



Black

Zip



Beige



Black



HOME DEKOR

— fashion furniture —

www.home-dekor.com