



HOME DEKOR

fashion furniture



RC WOOD/METAL COLLECTION

www.home-dekor.com

Chair

Francesc Rifé

2017

RC collection is fully rational. A sophisticated body rests on a visible structure, interpreted as the minimalist element of the whole. With no superfluous details, it is made of metal or solid ash wood, available in natural or black. The collection keeps growing and presents a great range of formats: chairs, stools, armchair, sofas, tables and poufs. All the typologies are connected through a language of ergonomic and wide forms. Its main feature is a curved backrest that extends in the form of armrests and embraces the user.

Interior and industrial designer, Francesc Rifé founds his own studio in Barcelona in 1994. Influenced by minimalism and following a familiar tradition linked to craftsmanship, his work focuses on ways of approaching spatial order and proportion. Currently, Rifé leads a team of professionals from several design fields that has won several awards: Contract World, Red Dot, HiP in Chicago, ICFF Editors, FAD, Delta and several ASCER awards.





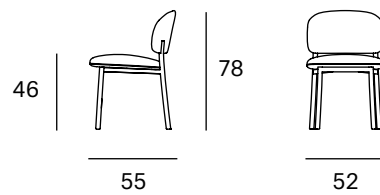
Ref: 130001

Materials

SEAT: Wood covered with polyurethane foam rubber of D. 32 kg and Fiber of 150 gr.

BACK: Curved beech wood board covered with polyurethane foam rubber D. 32 kg.

LEGS: Solid ash wood. Natural and black.

Dimensions**Packaging**

Measures	57x60x83	The product is delivered assembled.
Weight	13 kg	
Volume	0,28 m ³	
Boxes	1 box	

ORIGIN 100% Made in Spain**PRODUCTION TIME** 4 weeks**WARRANTY** 5 years

There is a five-year warranty against manufacturing defects (materials and workmanship). Wear and tear and damage to the product are not covered by this warranty. User claims under this warranty must be submitted to the distributor of the product.

Finishes

MADE TO ORDER

Upholstery Selection Blasco&Vila

SOL Collection



Blossom



Steel



Ocre



Scarlet



Blue



Turtle

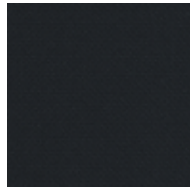
MAR Collection



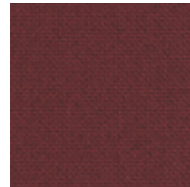
60112



60110



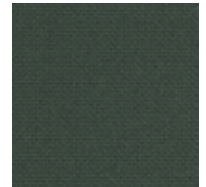
60111



64196



66170



68182

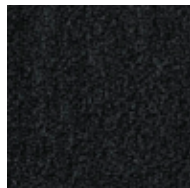
BIO Collection



Ivory



Steel

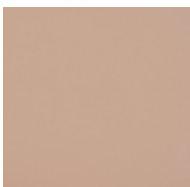


Onyx



Forest

ECO Collection



Lotus



Cognac



Mocca



Schwarz

CUSTOM Endless customisation

We can customise the product with any other upholstery:

Kvadrat
Gabriel
Camira
Sunbrella
Spradling
Crevin
etc.

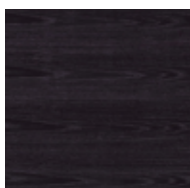
Fabric needed to upholster the product:

1,00 metre

Ash Wood



Natural



Black

Armchair

Francesc Rifé

2017

RC collection is fully rational. A sophisticated body rests on a visible structure, interpreted as the minimalist element of the whole. With no superfluous details, it is made of metal or solid ash wood, available in natural or black. The collection keeps growing and presents a great range of formats: chairs, stools, armchair, sofas, tables and poufs. All the typologies are connected through a language of ergonomic and wide forms. Its main feature is a curved backrest that extends in the form of armrests and embraces the user.

Interior and industrial designer, Francesc Rifé founds his own studio in Barcelona in 1994. Influenced by minimalism and following a familiar tradition linked to craftsmanship, his work focuses on ways of approaching spatial order and proportion. Currently, Rifé leads a team of professionals from several design fields that has won several awards: Contract World, Red Dot, HiP in Chicago, ICFF Editors, FAD, Delta and several ASCER awards.





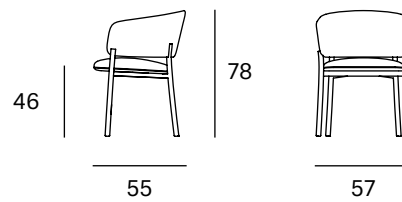
Ref: 330001

Materials

SEAT: Wood covered with polyurethane foam rubber of D. 32 kg and Fiber of 150 gr.

BACK: Curved beech wood board covered with polyurethane foam rubber D. 32 kg.

LEGS: Solid ash wood. Natural and black.

Dimensions**Packaging**

Measures	62x60x83	The product is delivered assembled.
Weight	15 kg	
Volume	0,31 m ³	
Boxes	1 box	

ORIGIN 100% Made in Spain**PRODUCTION TIME** 4 weeks**WARRANTY** 5 years

There is a five-year warranty against manufacturing defects (materials and workmanship). Wear and tear and damage to the product are not covered by this warranty. User claims under this warranty must be submitted to the distributor of the product.

Finishes

MADE TO ORDER

Upholstery Selection Blasco&Vila

SOL Collection



Blossom



Steel



Ocre



Scarlet



Blue



Turtle

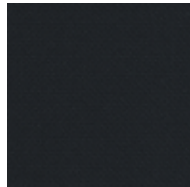
MAR Collection



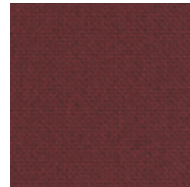
60112



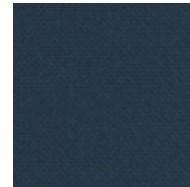
60110



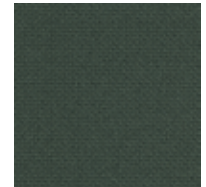
60111



64196



66170

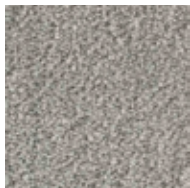


68182

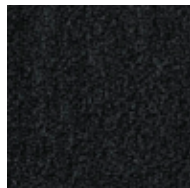
BIO Collection



Ivory



Steel

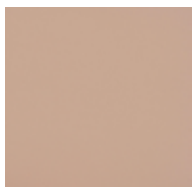


Onyx



Forest

ECO Collection



Lotus



Cognac



Mocca



Schwarz

CUSTOM Endless customisation

We can customise the product with any other upholstery:

Kvadrat
Gabriel
Camira
Sunbrella
Spradling
Crevin
etc.

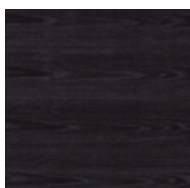
Fabric needed to upholster the product:

1,50 metres

Ash Wood



Natural



Black

Lounge chair

Francesc Rifé

2017

RC collection is fully rational. A sophisticated body rests on a visible structure, interpreted as the minimalist element of the whole. With no superfluous details, it is made of metal or solid ash wood, available in natural or black. The collection keeps growing and presents a great range of formats: chairs, stools, armchair, sofas, tables and poufs. All the typologies are connected through a language of ergonomic and wide forms. Its main feature is a curved backrest that extends in the form of armrests and embraces the user.

Interior and industrial designer, Francesc Rifé founds his own studio in Barcelona in 1994. Influenced by minimalism and following a familiar tradition linked to craftsmanship, his work focuses on ways of approaching spatial order and proportion. Currently, Rifé leads a team of professionals from several design fields that has won several awards: Contract World, Red Dot, HiP in Chicago, ICFF Editors, FAD, Delta and several ASCER awards.





Ref: 230001

Materials

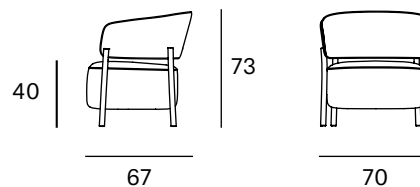
SEAT: Wood covered with polyurethane foam rubber of D. 32 kg and Fiber of 150 gr.

BACK: Metallic iron tube covered with flame retardant polyurethane (UNE EN 1021-2: 06 / BS 5852: 06) D. 60 kg.

LEGS: Solid ash wood. Natural and black.

Packaging

Measures	75x72x78	The product is delivered assembled.
Weight	18 kg	
Volume	0,42 m ³	
Boxes	1 box	

Dimensions**ORIGIN** 100% Made in Spain**PRODUCTION TIME** 4 weeks**WARRANTY** 5 years

There is a five-year warranty against manufacturing defects (materials and workmanship). Wear and tear and damage to the product are not covered by this warranty. User claims under this warranty must be submitted to the distributor of the product.

Finishes

MADE TO ORDER

Upholstery Selection Blasco&Vila

SOL Collection



Blossom



Steel



Ocre



Scarlet



Blue



Turtle

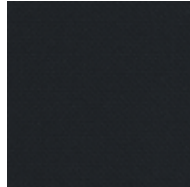
MAR Collection



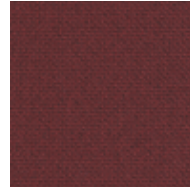
60112



60110



60111



64196



66170

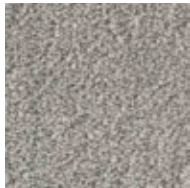


68182

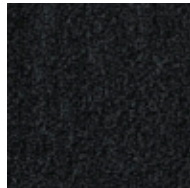
BIO Collection



Ivory



Steel

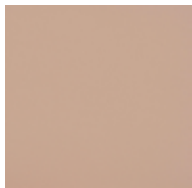


Onyx



Forest

ECO Collection



Lotus



Cognac



Mocca



Schwarz

CUSTOM Endless customisation

We can customise the product with any other upholstery:

Kvadrat
Gabriel
Camira
Sunbrella
Spradling
Crevin
etc.

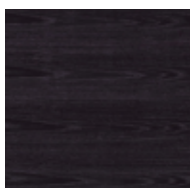
Fabric needed to upholster the product:

2,50 metres

Ash Wood



Natural



Black

Sofa

Francesc Rifé

2017

RC collection is fully rational. A sophisticated body rests on a visible structure, interpreted as the minimalist element of the whole. With no superfluous details, it is made of metal or solid ash wood, available in natural or black. The collection keeps growing and presents a great range of formats: chairs, stools, armchair, sofas, tables and poufs. All the typologies are connected through a language of ergonomic and wide forms. Its main feature is a curved backrest that extends in the form of armrests and embraces the user.

Interior and industrial designer, Francesc Rifé founds his own studio in Barcelona in 1994. Influenced by minimalism and following a familiar tradition linked to craftsmanship, his work focuses on ways of approaching spatial order and proportion. Currently, Rifé leads a team of professionals from several design fields that has won several awards: Contract World, Red Dot, HiP in Chicago, ICFF Editors, FAD, Delta and several ASCER awards.





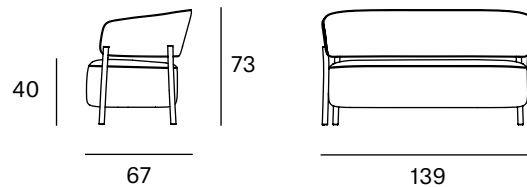
Ref: 630001

Materials

SEAT: Wood covered with polyurethane foam rubber of D. 32 kg and Fiber of 150 gr.

BACK: Wood covered with polyurethane foam rubber of D. 32 kg and Fiber of 150 gr.

LEGS: Solid ash wood. Natural and black.

Dimensions**Packaging**

Measures	144x72x78	The product is delivered assembled.
Weight	37 kg	
Volume	0,81 m ³	
Boxes	1 box	

ORIGIN 100% Made in Spain**PRODUCTION TIME** 4 weeks**WARRANTY** 5 years

There is a five-year warranty against manufacturing defects (materials and workmanship). Wear and tear and damage to the product are not covered by this warranty. User claims under this warranty must be submitted to the distributor of the product.

Finishes

MADE TO ORDER

Upholstery Selection Blasco&Vila

SOL Collection



Blossom



Steel



Ocre



Scarlet



Blue



Turtle

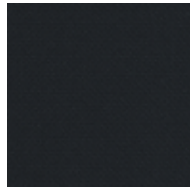
MAR Collection



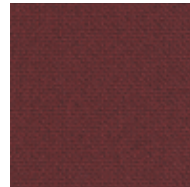
60112



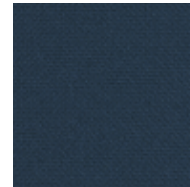
60110



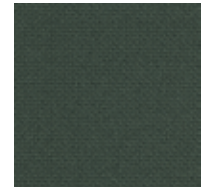
60111



64196



66170

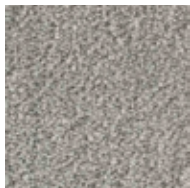


68182

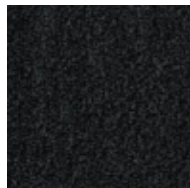
BIO Collection



Ivory



Steel

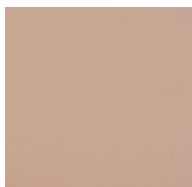


Onyx

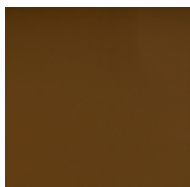


Forest

ECO Collection



Lotus



Cognac



Mocca



Schwarz

CUSTOM Endless customisation

We can customise the product with any other upholstery:

Kvadrat
Gabriel
Camira
Sunbrella
Spradling
Crevin
etc.

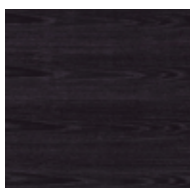
Fabric needed to upholster the product:

3,50 metres

Ash Wood



Natural



Black

Bench 65x65

Francesc Rifé

2021

RC collection is fully rational. A sophisticated body rests on a visible structure, interpreted as the minimalist element of the whole. With no superfluous details, it is made of metal or solid ash wood, available in natural or black. The collection keeps growing and presents a great range of formats: chairs, stools, armchair, sofas, tables and poufs. All the typologies are connected through a language of ergonomic and wide forms. Its main feature is a curved backrest that extends in the form of armrests and embraces the user.

Interior and industrial designer, Francesc Rifé founds his own studio in Barcelona in 1994. Influenced by minimalism and following a familiar tradition linked to craftsmanship, his work focuses on ways of approaching spatial order and proportion. Currently, Rifé leads a team of professionals from several design fields that has won several awards: Contract World, Red Dot, HiP in Chicago, ICFF Editors, FAD, Delta and several ASCER awards.





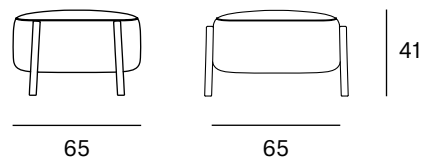
Ref: 930001

Materials

SEAT: Wood covered with polyurethane foam rubber of D. 32 kg and Fiber of 150 gr.

LEGS: Solid ash wood. Natural and black.

Dimensions



Packaging

Measures	70x70x45	The product is delivered assembled.
Weight	12 kg	
Volume	0,22 m ³	
Boxes	1 box	

ORIGIN 100% Made in Spain

PRODUCTION TIME 4 weeks

WARRANTY 5 years

There is a five-year warranty against manufacturing defects (materials and workmanship). Wear and tear and damage to the product are not covered by this warranty. User claims under this warranty must be submitted to the distributor of the product.

Finishes

MADE TO ORDER

Upholstery Selection Blasco&Vila

SOL Collection



Blossom



Steel



Ocre



Scarlet



Blue



Turtle

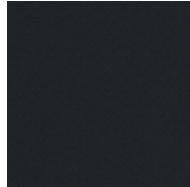
MAR Collection



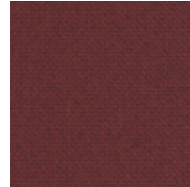
60112



60110



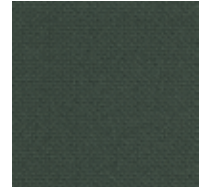
60111



64196



66170

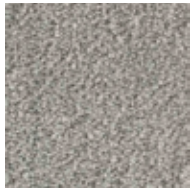


68182

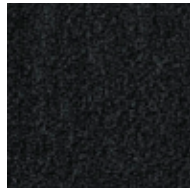
BIO Collection



Ivory



Steel

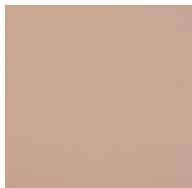


Onyx



Forest

ECO Collection



Lotus



Cognac



Mocca



Schwarz

CUSTOM Endless customisation

We can customise the product with any other upholstery:

Kvadrat
Gabriel
Camira
Sunbrella
Spradling
Crevin
etc.

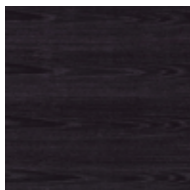
Fabric needed to upholster the product:

1,50 metres

Ash Wood



Natural



Black

Bench 65x125

Francesc Rifé

2021

RC collection is fully rational. A sophisticated body rests on a visible structure, interpreted as the minimalist element of the whole. With no superfluous details, it is made of metal or solid ash wood, available in natural or black. The collection keeps growing and presents a great range of formats: chairs, stools, armchair, sofas, tables and poufs. All the typologies are connected through a language of ergonomic and wide forms. Its main feature is a curved backrest that extends in the form of armrests and embraces the user.

Interior and industrial designer, Francesc Rifé founds his own studio in Barcelona in 1994. Influenced by minimalism and following a familiar tradition linked to craftsmanship, his work focuses on ways of approaching spatial order and proportion. Currently, Rifé leads a team of professionals from several design fields that has won several awards: Contract World, Red Dot, HiP in Chicago, ICFF Editors, FAD, Delta and several ASCER awards.





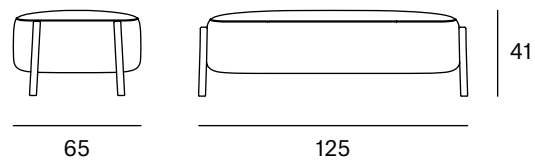
Ref: 930002

Materials

SEAT: Wood covered with polyurethane foam rubber of D. 32 kg and Fiber of 150 gr.

LEGS: Solid ash wood. Natural and black.

Dimensions



Packaging

Measures	70x130x45	The product is delivered assembled.
Weight	20 kg	
Volume	0,41 m ³	
Boxes	1 box	

ORIGIN 100% Made in Spain

PRODUCTION TIME 4 weeks

WARRANTY 5 years

There is a five-year warranty against manufacturing defects (materials and workmanship). Wear and tear and damage to the product are not covered by this warranty. User claims under this warranty must be submitted to the distributor of the product.

Finishes

MADE TO ORDER

Upholstery Selection Blasco&Vila

SOL Collection



Blossom



Steel



Ocre



Scarlet



Blue



Turtle

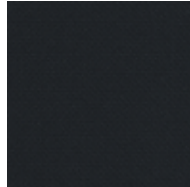
MAR Collection



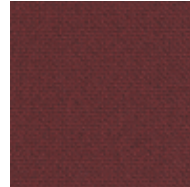
60112



60110



60111



64196



66170

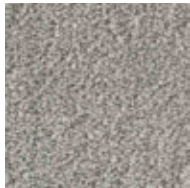


68182

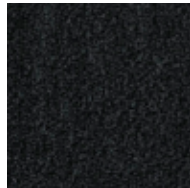
BIO Collection



Ivory



Steel

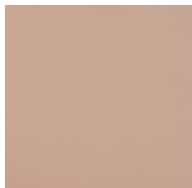


Onyx



Forest

ECO Collection



Lotus



Cognac



Mocca



Schwarz

CUSTOM Endless customisation

We can customise the product with any other upholstery:

Kvadrat
Gabriel
Camira
Sunbrella
Spradling
Crevin
etc.

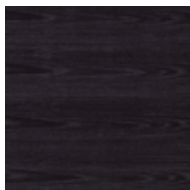
Fabric needed to upholster the product:

2,00 metres

Ash Wood



Natural



Black

Bench 125X125

Francesc Rifé

2021

RC collection is fully rational. A sophisticated body rests on a visible structure, interpreted as the minimalist element of the whole. With no superfluous details, it is made of metal or solid ash wood, available in natural or black. The collection keeps growing and presents a great range of formats: chairs, stools, armchair, sofas, tables and poufs. All the typologies are connected through a language of ergonomic and wide forms. Its main feature is a curved backrest that extends in the form of armrests and embraces the user.

Interior and industrial designer, Francesc Rifé founds his own studio in Barcelona in 1994. Influenced by minimalism and following a familiar tradition linked to craftsmanship, his work focuses on ways of approaching spatial order and proportion. Currently, Rifé leads a team of professionals from several design fields that has won several awards: Contract World, Red Dot, HiP in Chicago, ICFF Editors, FAD, Delta and several ASCER awards.





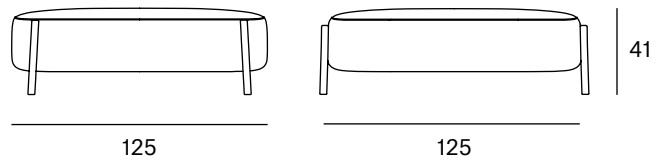
Ref: 930003

Materials

SEAT: Wood covered with polyurethane foam rubber of D. 32 kg and Fiber of 150 gr.

LEGS: Solid ash wood. Natural and black.

Dimensions



Packaging

Measures	130x130x45	The product is delivered assembled.
Weight	35 kg	
Volume	0,76 m ³	
Boxes	1 box	

ORIGIN 100% Made in Spain

PRODUCTION TIME 4 weeks

WARRANTY 5 years

There is a five-year warranty against manufacturing defects (materials and workmanship). Wear and tear and damage to the product are not covered by this warranty. User claims under this warranty must be submitted to the distributor of the product.

Finishes

MADE TO ORDER

Upholstery Selection Blasco&Vila

SOL Collection



Blossom



Steel



Ocre



Scarlet



Blue



Turtle

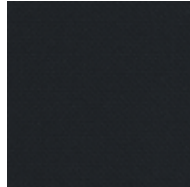
MAR Collection



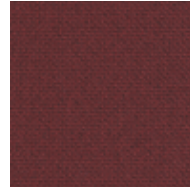
60112



60110



60111



64196



66170

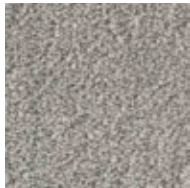


68182

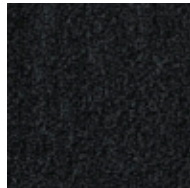
BIO Collection



Ivory



Steel

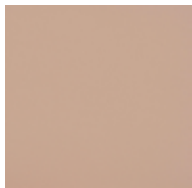


Onyx



Forest

ECO Collection



Lotus



Cognac



Mocca



Schwarz

CUSTOM Endless customisation

We can customise the product with any other upholstery:

Kvadrat
Gabriel
Camira
Sunbrella
Spradling
Crevin
etc.

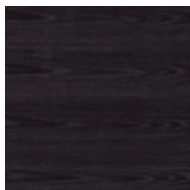
Fabric needed to upholster the product:

3,00 metres

Ash Wood



Natural



Black

Chair

Francesc Rifé

2017

RC collection is fully rational. A sophisticated body rests on a visible structure, interpreted as the minimalist element of the whole. With no superfluous details, it is made of metal or solid ash wood, available in natural or black. The collection keeps growing and presents a great range of formats: chairs, stools, armchair, sofas, tables and poufs. All the typologies are connected through a language of ergonomic and wide forms. Its main feature is a curved backrest that extends in the form of armrests and embraces the user.

Interior and industrial designer, Francesc Rifé founds his own studio in Barcelona in 1994. Influenced by minimalism and following a familiar tradition linked to craftsmanship, his work focuses on ways of approaching spatial order and proportion. Currently, Rifé leads a team of professionals from several design fields that has won several awards: Contract World, Red Dot, HiP in Chicago, ICFF Editors, FAD, Delta and several ASCER awards.





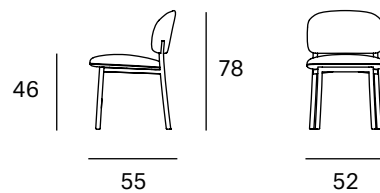
Ref: 130000

Materials

SEAT: Wood covered with polyurethane foam rubber of D. 32 kg and Fiber of 150 gr.

BACK: Curved beech wood board covered with polyurethane foam rubber D. 32 kg.

LEGS: Black lacquered metal F1.

Dimensions**Packaging**

Measures	57x60x83	The product is delivered assembled.
Weight	13 kg	
Volume	0,28 m ³	
Boxes	1 box	

ORIGIN 100% Made in Spain**PRODUCTION TIME** 4 weeks**WARRANTY** 5 years

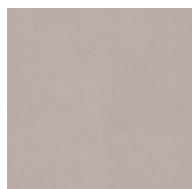
There is a five-year warranty against manufacturing defects (materials and workmanship). Wear and tear and damage to the product are not covered by this warranty. User claims under this warranty must be submitted to the distributor of the product.

Finishes

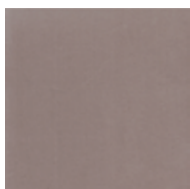
MADE TO ORDER

Upholstery Selection Blasco&Vila

SOL Collection



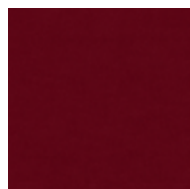
Blossom



Steel



Ocre



Scarlet



Blue

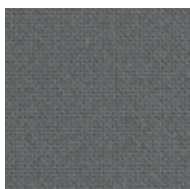


Turtle

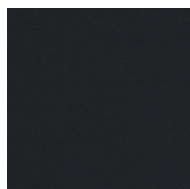
MAR Collection



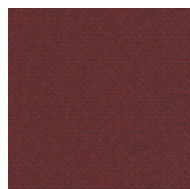
60112



60110



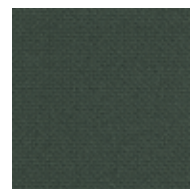
60111



64196



66170



68182

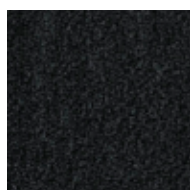
BIO Collection



Ivory



Steel

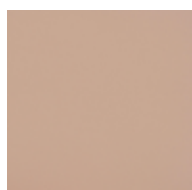


Onyx



Forest

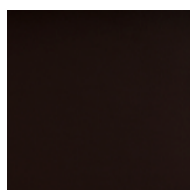
ECO Collection



Lotus



Cognac



Mocca



Schwarz

CUSTOM Endless customisation

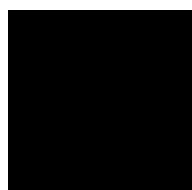
We can customise the product with any other upholstery:

Kvadrat
Gabriel
Camira
Sunbrella
Spradling
Crevin
etc.

Fabric needed to upholster the product:

1,00 metre

Metal



Black

Armchair

Francesc Rifé

2017

RC collection is fully rational. A sophisticated body rests on a visible structure, interpreted as the minimalist element of the whole. With no superfluous details, it is made of metal or solid ash wood, available in natural or black. The collection keeps growing and presents a great range of formats: chairs, stools, armchair, sofas, tables and poufs. All the typologies are connected through a language of ergonomic and wide forms. Its main feature is a curved backrest that extends in the form of armrests and embraces the user.

Interior and industrial designer, Francesc Rifé founds his own studio in Barcelona in 1994. Influenced by minimalism and following a familiar tradition linked to craftsmanship, his work focuses on ways of approaching spatial order and proportion. Currently, Rifé leads a team of professionals from several design fields that has won several awards: Contract World, Red Dot, HiP in Chicago, ICFF Editors, FAD, Delta and several ASCER awards.





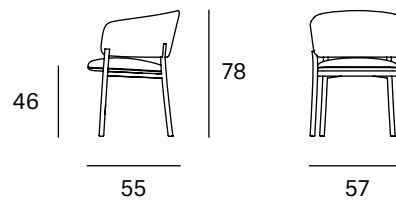
Ref: 330000

Materials

SEAT: Wood covered with polyurethane foam rubber of D. 32 kg and Fiber of 150 gr.

BACK: Curved beech wood board covered with polyurethane foam rubber D. 32 kg.

LEGS: Black lacquered metal F1.

Dimensions

Packaging

Measures	62x60x83	The product is delivered assembled.
Weight	15 kg	
Volume	0,31 m ³	
Boxes	1 box	

ORIGIN 100% Made in Spain**PRODUCTION TIME** 4 weeks**WARRANTY** 5 years

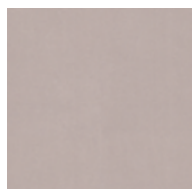
There is a five-year warranty against manufacturing defects (materials and workmanship). Wear and tear and damage to the product are not covered by this warranty. User claims under this warranty must be submitted to the distributor of the product.

Finishes

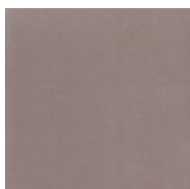
MADE TO ORDER

Upholstery Selection Blasco&Vila

SOL Collection



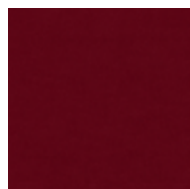
Blossom



Steel



Ocre



Scarlet

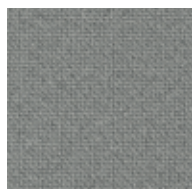


Blue

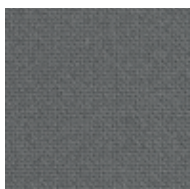


Turtle

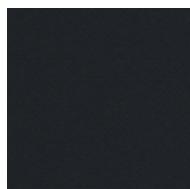
MAR Collection



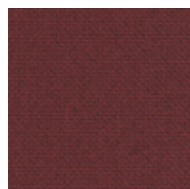
60112



60110



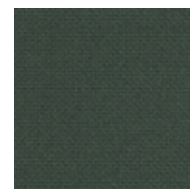
60111



64196



66170



68182

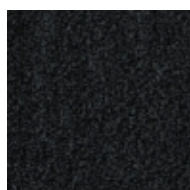
BIO Collection



Ivory



Steel

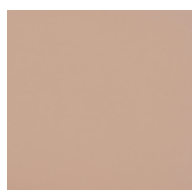


Onyx



Forest

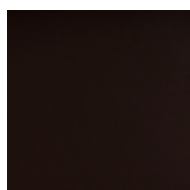
ECO Collection



Lotus



Cognac



Mocca



Schwarz

CUSTOM Endless customisation

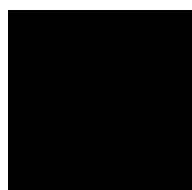
We can customise the product with any other upholstery:

Kvadrat
Gabriel
Camira
Sunbrella
Spradling
Crevin
etc.

Fabric needed to upholster the product:

1,50 metres

Metal



Black

Stool

Francesc Rifé

2017

RC collection is fully rational. A sophisticated body rests on a visible structure, interpreted as the minimalist element of the whole. With no superfluous details, it is made of metal or solid ash wood, available in natural or black. The collection keeps growing and presents a great range of formats: chairs, stools, armchair, sofas, tables and poufs. All the typologies are connected through a language of ergonomic and wide forms. Its main feature is a curved backrest that extends in the form of armrests and embraces the user.

Interior and industrial designer, Francesc Rifé founds his own studio in Barcelona in 1994. Influenced by minimalism and following a familiar tradition linked to craftsmanship, his work focuses on ways of approaching spatial order and proportion. Currently, Rifé leads a team of professionals from several design fields that has won several awards: Contract World, Red Dot, HiP in Chicago, ICFF Editors, FAD, Delta and several ASCER awards.





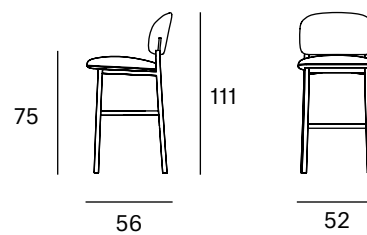
Ref: 430000

Materials

SEAT: Wood covered with polyurethane foam rubber of D. 32 kg and Fiber of 150 gr.

BACK: Curved beech wood board covered with polyurethane foam rubber D. 32 kg.

LEGS: Black lacquered metal F1.

Dimensions**Packaging**

Measures	57x61x116	The product is delivered assembled.
Weight	16 kg	
Volume	0,39 m ³	
Boxes	1 box	

ORIGIN 100% Made in Spain**PRODUCTION TIME** 4 weeks**WARRANTY** 5 years

There is a five-year warranty against manufacturing defects (materials and workmanship). Wear and tear and damage to the product are not covered by this warranty. User claims under this warranty must be submitted to the distributor of the product.

Finishes

MADE TO ORDER

Upholstery Selection Blasco&Vila

SOL Collection



Blossom



Steel



Ocre



Scarlet

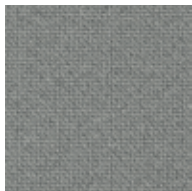


Blue

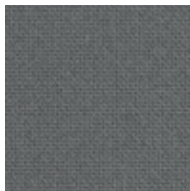


Turtle

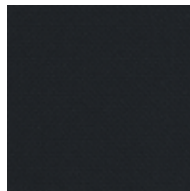
MAR Collection



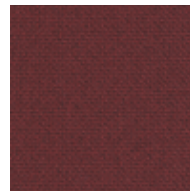
60112



60110



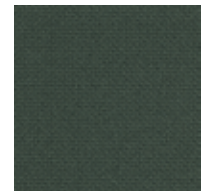
60111



64196

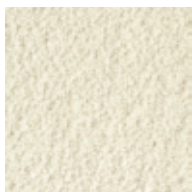


66170



68182

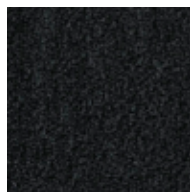
BIO Collection



Ivory



Steel

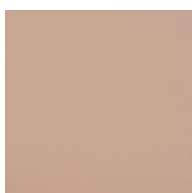


Onyx

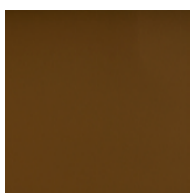


Forest

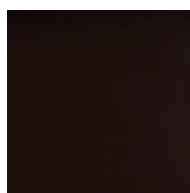
ECO Collection



Lotus



Cognac



Mocca



Schwarz

CUSTOM Endless customisation

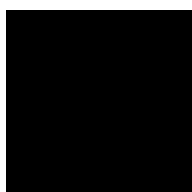
We can customise the product with any other upholstery:

Kvadrat
Gabriel
Camira
Sunbrella
Spradling
Crevin
etc.

Fabric needed to upholster the product:

1,00 metre

Metal



Black

Armrest stool

Francesc Rifé

2017

RC collection is fully rational. A sophisticated body rests on a visible structure, interpreted as the minimalist element of the whole. With no superfluous details, it is made of metal or solid ash wood, available in natural or black. The collection keeps growing and presents a great range of formats: chairs, stools, armchair, sofas, tables and poufs. All the typologies are connected through a language of ergonomic and wide forms. Its main feature is a curved backrest that extends in the form of armrests and embraces the user.

Interior and industrial designer, Francesc Rifé founds his own studio in Barcelona in 1994. Influenced by minimalism and following a familiar tradition linked to craftsmanship, his work focuses on ways of approaching spatial order and proportion. Currently, Rifé leads a team of professionals from several design fields that has won several awards: Contract World, Red Dot, HiP in Chicago, ICFF Editors, FAD, Delta and several ASCER awards.





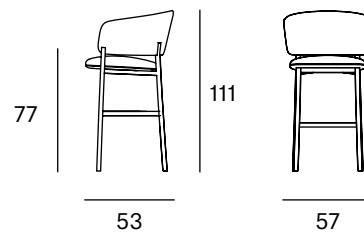
Ref: 530000

Materials

SEAT: Wood covered with polyurethane foam rubber of D. 32 kg and Fiber of 150 gr.

BACK: Curved beech wood board covered with polyurethane foam rubber D. 32 kg.

LEGS: Black lacquered metal F1.

Dimensions**Packaging**

Measures	62x61x116	The product is delivered assembled.
Weight	20 kg	
Volume	0,43 m ³	
Boxes	1 box	

ORIGIN 100% Made in Spain**PRODUCTION TIME** 4 weeks**WARRANTY** 5 years

There is a five-year warranty against manufacturing defects (materials and workmanship). Wear and tear and damage to the product are not covered by this warranty. User claims under this warranty must be submitted to the distributor of the product.

Finishes

MADE TO ORDER

Upholstery Selection Blasco&Vila

SOL Collection



Blossom



Steel



Ocre



Scarlet



Blue



Turtle

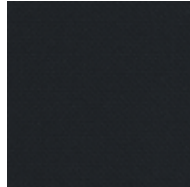
MAR Collection



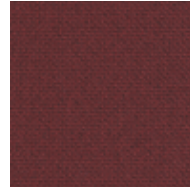
60112



60110



60111



64196



66170

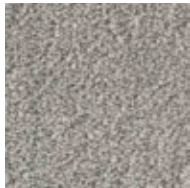


68182

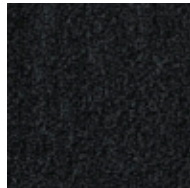
BIO Collection



Ivory



Steel

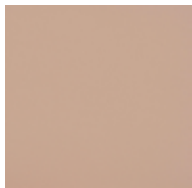


Onyx



Forest

ECO Collection



Lotus



Cognac



Mocca



Schwarz

CUSTOM Endless customisation

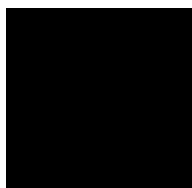
We can customise the product with any other upholstery:

Kvadrat
Gabriel
Camira
Sunbrella
Spradling
Crevin
etc.

Fabric needed to upholster the product:

1,50 metres

Metal



Black

Easy chair

Francesc Rifé

2019

RC collection is fully rational. A sophisticated body rests on a visible structure, interpreted as the minimalist element of the whole. With no superfluous details, it is made of metal or solid ash wood, available in natural or black. The collection keeps growing and presents a great range of formats: chairs, stools, armchair, sofas, tables and poufs. All the typologies are connected through a language of ergonomic and wide forms. Its main feature is a curved backrest that extends in the form of armrests and embraces the user.

Interior and industrial designer, Francesc Rifé founds his own studio in Barcelona in 1994. Influenced by minimalism and following a familiar tradition linked to craftsmanship, his work focuses on ways of approaching spatial order and proportion. Currently, Rifé leads a team of professionals from several design fields that has won several awards: Contract World, Red Dot, HiP in Chicago, ICFF Editors, FAD, Delta and several ASCER awards.





Ref: 730000

Materials

SEAT: Wood covered with polyurethane foam rubber of D. 32 kg and Fiber of 150 gr.

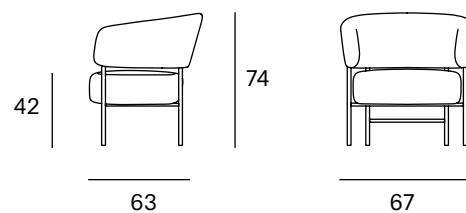
BACK: Metallic iron tube covered with flame retardant polyurethane (UNE EN 1021-2: 06 / BS 5852: 06) D. 60 kg.

LEGS: Black lacquered metal F1.

Packaging

Measures	72x68x79	The product is delivered assembled.
Weight	18 kg	
Volume	0,39 m ³	
Boxes	1 box	

Dimensions



ORIGIN 100% Made in Spain

PRODUCTION TIME 4 weeks

WARRANTY 5 years

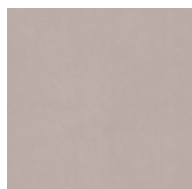
There is a five-year warranty against manufacturing defects (materials and workmanship). Wear and tear and damage to the product are not covered by this warranty. User claims under this warranty must be submitted to the distributor of the product.

Finishes

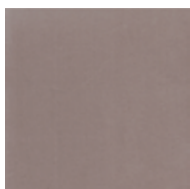
MADE TO ORDER

Upholstery Selection Blasco&Vila

SOL Collection



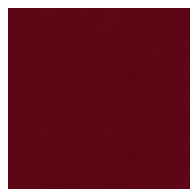
Blossom



Steel



Ocre



Scarlet

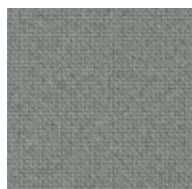


Blue

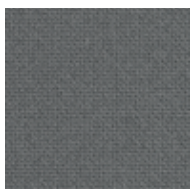


Turtle

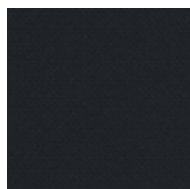
MAR Collection



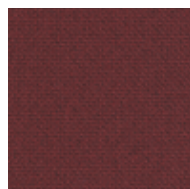
60112



60110



60111



64196



66170



68182

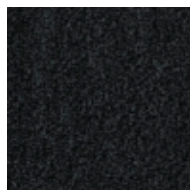
BIO Collection



Ivory



Steel

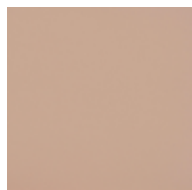


Onyx



Forest

ECO Collection



Lotus



Cognac



Mocca



Schwarz

CUSTOM Endless customisation

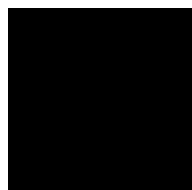
We can customise the product with any other upholstery:

Kvadrat
Gabriel
Camira
Sunbrella
Spradling
Crevin
etc.

Fabric needed to upholster the product:

2,00 metres

Metal



Black

Lounge chair

Francesc Rifé

2017

RC collection is fully rational. A sophisticated body rests on a visible structure, interpreted as the minimalist element of the whole. With no superfluous details, it is made of metal or solid ash wood, available in natural or black. The collection keeps growing and presents a great range of formats: chairs, stools, armchair, sofas, tables and poufs. All the typologies are connected through a language of ergonomic and wide forms. Its main feature is a curved backrest that extends in the form of armrests and embraces the user.

Interior and industrial designer, Francesc Rifé founds his own studio in Barcelona in 1994. Influenced by minimalism and following a familiar tradition linked to craftsmanship, his work focuses on ways of approaching spatial order and proportion. Currently, Rifé leads a team of professionals from several design fields that has won several awards: Contract World, Red Dot, HiP in Chicago, ICFF Editors, FAD, Delta and several ASCER awards.





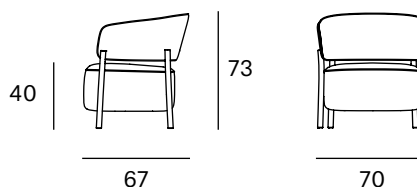
Ref: 230000

Materials

SEAT: Wood covered with polyurethane foam rubber of D. 32 kg and Fiber of 150 gr.

BACK: Metallic iron tube covered with flame retardant polyurethane (UNE EN 1021-2: 06 / BS 5852: 06) D. 60 kg.

LEGS: Black lacquered metal F1.

Dimensions**Packaging**

Measures	75x72x78	The product is delivered assembled.
Weight	18 kg	
Volume	0,42 m ³	
Boxes	1 box	

ORIGIN 100% Made in Spain**PRODUCTION TIME** 4 weeks**WARRANTY** 5 years

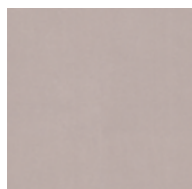
There is a five-year warranty against manufacturing defects (materials and workmanship). Wear and tear and damage to the product are not covered by this warranty. User claims under this warranty must be submitted to the distributor of the product.

Finishes

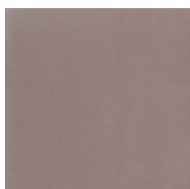
MADE TO ORDER

Upholstery Selection Blasco&Vila

SOL Collection



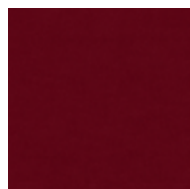
Blossom



Steel



Ocre



Scarlet

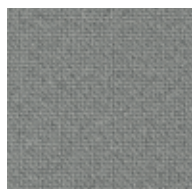


Blue

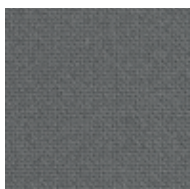


Turtle

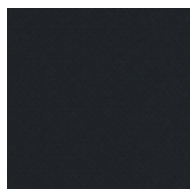
MAR Collection



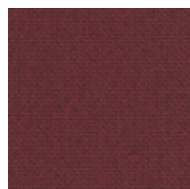
60112



60110



60111



64196



66170



68182

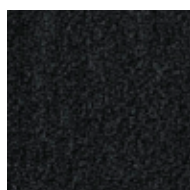
BIO Collection



Ivory



Steel

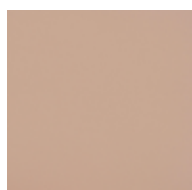


Onyx

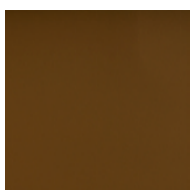


Forest

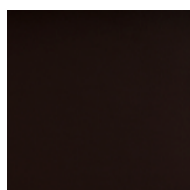
ECO Collection



Lotus



Cognac



Mocca



Schwarz

CUSTOM Endless customisation

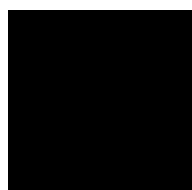
We can customise the product with any other upholstery:

Kvadrat
Gabriel
Camira
Sunbrella
Spradling
Crevin
etc.

Fabric needed to upholster the product:

2,50 metres

Metal



Black

Sofa

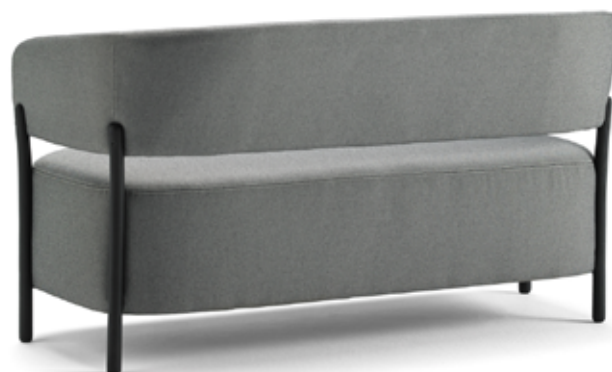
Francesc Rifé

2017

RC collection is fully rational. A sophisticated body rests on a visible structure, interpreted as the minimalist element of the whole. With no superfluous details, it is made of metal or solid ash wood, available in natural or black. The collection keeps growing and presents a great range of formats: chairs, stools, armchair, sofas, tables and poufs. All the typologies are connected through a language of ergonomic and wide forms. Its main feature is a curved backrest that extends in the form of armrests and embraces the user.

Interior and industrial designer, Francesc Rifé founds his own studio in Barcelona in 1994. Influenced by minimalism and following a familiar tradition linked to craftsmanship, his work focuses on ways of approaching spatial order and proportion. Currently, Rifé leads a team of professionals from several design fields that has won several awards: Contract World, Red Dot, HiP in Chicago, ICFF Editors, FAD, Delta and several ASCER awards.





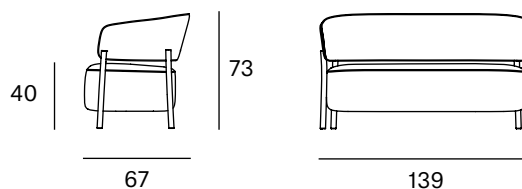
Ref: 630000

Materials

SEAT: Wood covered with polyurethane foam rubber of D. 32 kg and Fiber of 150 gr.

BACK: Wood covered with polyurethane foam rubber of D. 32 kg and Fiber of 150 gr.

LEGS: Black lacquered metal F1.

Dimensions**Packaging**

Measures	144x72x78	The product is delivered assembled.
Weight	37 kg	
Volume	0,81 m ³	
Boxes	1 box	

ORIGIN 100% Made in Spain**PRODUCTION TIME** 4 weeks**WARRANTY** 5 years

There is a five-year warranty against manufacturing defects (materials and workmanship). Wear and tear and damage to the product are not covered by this warranty. User claims under this warranty must be submitted to the distributor of the product.

Finishes

MADE TO ORDER

Upholstery Selection Blasco&Vila

SOL Collection



Blossom



Steel



Ocre



Scarlet



Blue

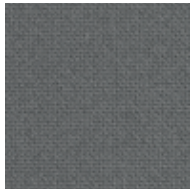


Turtle

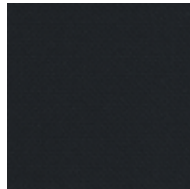
MAR Collection



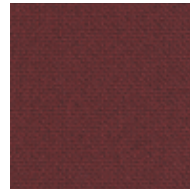
60112



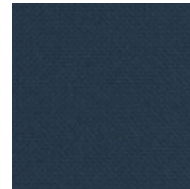
60110



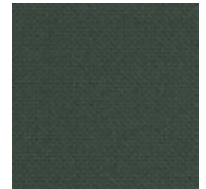
60111



64196



66170



68182

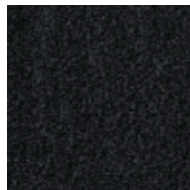
BIO Collection



Ivory



Steel

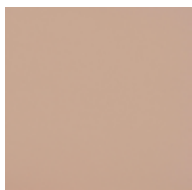


Onyx



Forest

ECO Collection



Lotus



Cognac



Mocca



Schwarz

CUSTOM Endless customisation

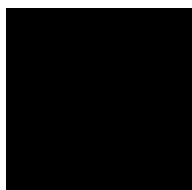
We can customise the product with any other upholstery:

Kvadrat
Gabriel
Camira
Sunbrella
Spradling
Crevin
etc.

Fabric needed to upholster the product:

3,50 metres

Metal



Black

Lobby chair

Francesc Rifé

2021

RC collection is fully rational. A sophisticated body rests on a visible structure, interpreted as the minimalist element of the whole. With no superfluous details, it is made of metal or solid ash wood, available in natural or black. The collection keeps growing and presents a great range of formats: chairs, stools, armchair, sofas, tables and poufs. All the typologies are connected through a language of ergonomic and wide forms. Its main feature is a curved backrest that extends in the form of armrests and embraces the user.

Interior and industrial designer, Francesc Rifé founds his own studio in Barcelona in 1994. Influenced by minimalism and following a familiar tradition linked to craftsmanship, his work focuses on ways of approaching spatial order and proportion. Currently, Rifé leads a team of professionals from several design fields that has won several awards: Contract World, Red Dot, HiP in Chicago, ICFF Editors, FAD, Delta and several ASCER awards.





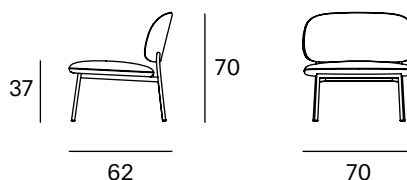
Ref: 830000

Materials

SEAT: Wood covered with polyurethane foam rubber of D. 32 kg and Fiber of 150 gr.

BACK: Curved beech wood board covered with polyurethane foam rubber D. 32 kg.

LEGS: Black lacquered metal F1.

Dimensions**Packaging**

Measures	75x70x75	The product is delivered assembled.
Weight	14 kg	
Volume	0,39 m ³	
Boxes	1 box	

ORIGIN 100% Made in Spain**PRODUCTION TIME** 4 weeks**WARRANTY** 5 years

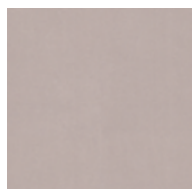
There is a five-year warranty against manufacturing defects (materials and workmanship). Wear and tear and damage to the product are not covered by this warranty. User claims under this warranty must be submitted to the distributor of the product.

Finishes

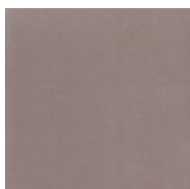
MADE TO ORDER

Upholstery Selection Blasco&Vila

SOL Collection



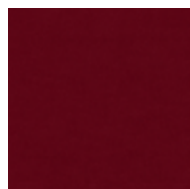
Blossom



Steel



Ocre



Scarlet

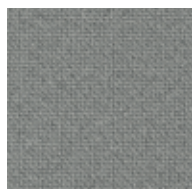


Blue

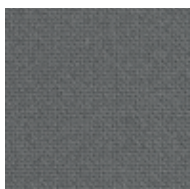


Turtle

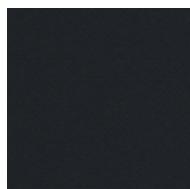
MAR Collection



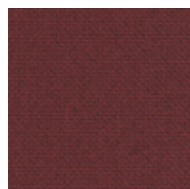
60112



60110



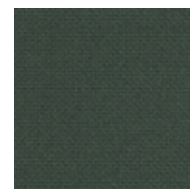
60111



64196



66170



68182

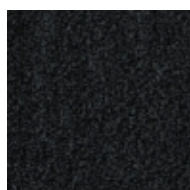
BIO Collection



Ivory



Steel

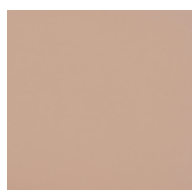


Onyx



Forest

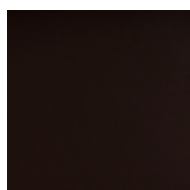
ECO Collection



Lotus



Cognac



Mocca



Schwarz

CUSTOM Endless customisation

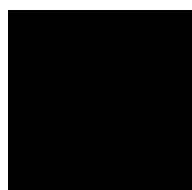
We can customise the product with any other upholstery:

Kvadrat
Gabriel
Camira
Sunbrella
Spradling
Crevin
etc.

Fabric needed to upholster the product:

2,00 metres

Metal



Black

Bench

Francesc Rifé

2021

RC collection is fully rational. A sophisticated body rests on a visible structure, interpreted as the minimalist element of the whole. With no superfluous details, it is made of metal or solid ash wood, available in natural or black. The collection keeps growing and presents a great range of formats: chairs, stools, armchair, sofas, tables and poufs. All the typologies are connected through a language of ergonomic and wide forms. Its main feature is a curved backrest that extends in the form of armrests and embraces the user.

Interior and industrial designer, Francesc Rifé founds his own studio in Barcelona in 1994. Influenced by minimalism and following a familiar tradition linked to craftsmanship, his work focuses on ways of approaching spatial order and proportion. Currently, Rifé leads a team of professionals from several design fields that has won several awards: Contract World, Red Dot, HiP in Chicago, ICFF Editors, FAD, Delta and several ASCER awards.





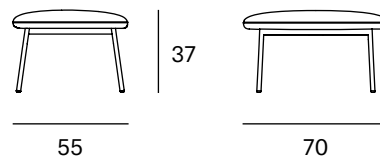
Ref: 930000

Materials

SEAT: Wood covered with polyurethane foam rubber of D. 32 kg and Fiber of 150 gr.

LEGS: Black lacquered metal F1.

Dimensions



Packaging

Measures	75x60x40	The product is delivered assembled.
Weight	10 kg	
Volume	0,18 m ³	
Boxes	1 box	

ORIGIN 100% Made in Spain

PRODUCTION TIME 4 weeks

WARRANTY 5 years

There is a five-year warranty against manufacturing defects (materials and workmanship). Wear and tear and damage to the product are not covered by this warranty. User claims under this warranty must be submitted to the distributor of the product.

Finishes

MADE TO ORDER

Upholstery Selection Blasco&Vila

SOL Collection



Blossom



Steel



Ocre



Scarlet



Blue

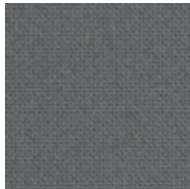


Turtle

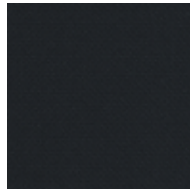
MAR Collection



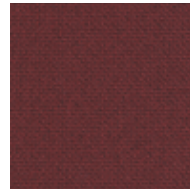
60112



60110



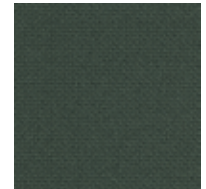
60111



64196



66170

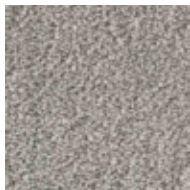


68182

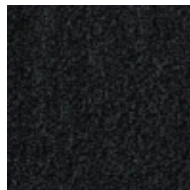
BIO Collection



Ivory



Steel

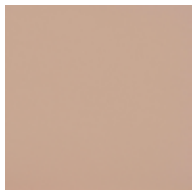


Onyx



Forest

ECO Collection



Lotus



Cognac



Mocca



Schwarz

CUSTOM Endless customisation

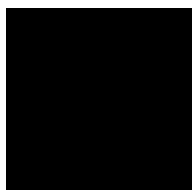
We can customise the product with any other upholstery:

Kvadrat
Gabriel
Camira
Sunbrella
Spradling
Crevin
etc.

Fabric needed to upholster the product:

1,00 metre

Metal



Black

Side table

Francesc Rifé

2021

RC collection is fully rational. A sophisticated body rests on a visible structure, interpreted as the minimalist element of the whole. With no superfluous details, it is made of metal or solid ash wood, available in natural or black. The collection keeps growing and presents a great range of formats: chairs, stools, armchair, sofas, tables and poufs. All the typologies are connected through a language of ergonomic and wide forms. Its main feature is a curved backrest that extends in the form of armrests and embraces the user.

Interior and industrial designer, Francesc Rifé founds his own studio in Barcelona in 1994. Influenced by minimalism and following a familiar tradition linked to craftsmanship, his work focuses on ways of approaching spatial order and proportion. Currently, Rifé leads a team of professionals from several design fields that has won several awards: Contract World, Red Dot, HiP in Chicago, ICFF Editors, FAD, Delta and several ASCER awards.





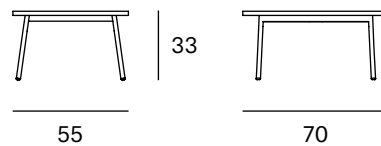
Ref: 940000

Materials

LEGS: Black lacquered metal F1.

TOP: Granite.

Dimensions



Packaging

Measures 75x60x40

Weight 25 kg

Volume 0,18 m³

Boxes 1 box

The product is delivered assembled.

ORIGIN 100% Made in Spain

PRODUCTION TIME 4 weeks

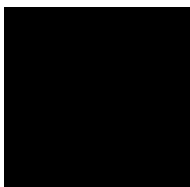
WARRANTY 5 years

There is a five-year warranty against manufacturing defects (materials and workmanship). Wear and tear and damage to the product are not covered by this warranty. User claims under this warranty must be submitted to the distributor of the product.

Finishes

MADE TO ORDER

Metal



Black

Top



Grey Granite



HOME DEKOR

— fashion furniture —

www.home-dekor.com