



HOME DEKOR

*fashion furniture*



POL COLLECTION

[www.home-dekor.com](http://www.home-dekor.com)

# High armchair

Francesc Rifé

2019

Pol, a youthful breath of fresh air. A welcoming collection of endearing lines that give prominence to a generous ergonomic backrest. The arms incorporated in the external sphere, as fine surfaces that balance the entirety. While the legs, finished in wood, are the delicate counterpoint to the strength of a fully upholstered body. The rounded contours make it a soft piece and easily adaptable to any space.

Interior and industrial designer, Francesc Rifé founds his own studio in Barcelona in 1994. Influenced by minimalism and following a familiar tradition linked to craftsmanship, his work focuses on ways of approaching spatial order and proportion. Currently, Rifé leads a team of professionals from several design fields that has won several awards: Contract World, Red Dot, HiP in Chicago, ICFF Editors, FAD, Delta and several ASCER awards.





Ref: 270000

**Materials**

STRUCTURE: Wood seat and bent plywood backrest in beech wood.

SEAT: Polyurethane foam rubber density 32 kg.

BACK: Polyurethane foam rubber density 32 kg.

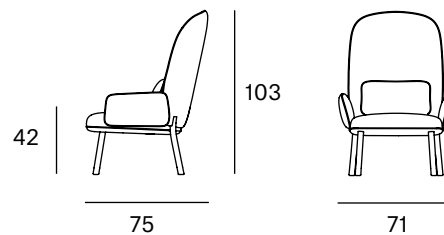
CUSHION: D. 25 kg S.S. polyurethane foam rubber covered with polyester fiber and cotton cover.

LEGS: Beech wood. Natural and black.

**Packaging**

Measures	76x80x108	The product is delivered assembled.
Weight	22 kg	
Volume	0,65 m <sup>3</sup>	
Boxes	1 box	

**Dimensions**



**ORIGIN** 100% Made in Spain

**PRODUCTION TIME** 4 weeks

**WARRANTY** 5 years

There is a five-year warranty against manufacturing defects (materials and workmanship). Wear and tear and damage to the product are not covered by this warranty. User claims under this warranty must be submitted to the distributor of the product.

# Finishes

MADE TO ORDER

## Upholstery Selection Blasco&Vila

### SOL Collection



Blossom



Steel



Ocre



Scarlet



Blue

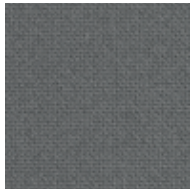


Turtle

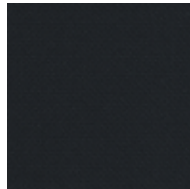
### MAR Collection



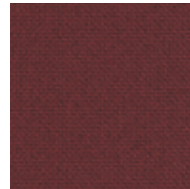
60112



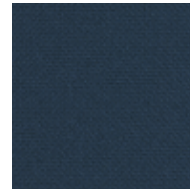
60110



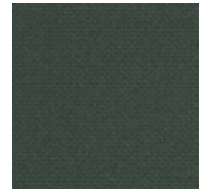
60111



64196



66170

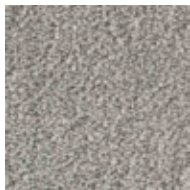


68182

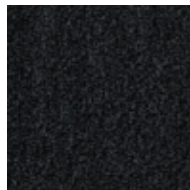
### BIO Collection



Ivory



Steel

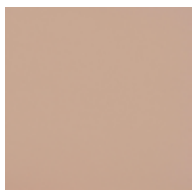


Onyx



Forest

### ECO Collection



Lotus



Cognac



Mocca



Schwarz

### CUSTOM Endless customisation

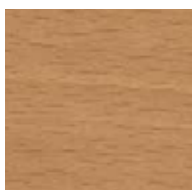
We can customise the product with any other upholstery:

Kvadrat  
Gabriel  
Camira  
Sunbrella  
Spradling  
Crevin  
*etc.*

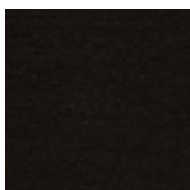
Fabric needed to upholster the product:

3,00 metres

## Beech Wood



Natural



Black

# Low armchair

Francesc Rifé

2019

Pol, a youthful breath of fresh air. A welcoming collection of endearing lines that give prominence to a generous ergonomic backrest. The arms incorporated in the external sphere, as fine surfaces that balance the entirety. While the legs, finished in wood, are the delicate counterpoint to the strength of a fully upholstered body. The rounded contours make it a soft piece and easily adaptable to any space.

Interior and industrial designer, Francesc Rifé founds his own studio in Barcelona in 1994. Influenced by minimalism and following a familiar tradition linked to craftsmanship, his work focuses on ways of approaching spatial order and proportion. Currently, Rifé leads a team of professionals from several design fields that has won several awards: Contract World, Red Dot, HiP in Chicago, ICFF Editors, FAD, Delta and several ASCER awards.





Ref: 270001

### Materials

STRUCTURE: Wood seat and bent plywood backrest in beech wood.

SEAT: Polyurethane foam rubber density 32 kg.

BACK: Polyurethane foam rubber density 32 kg.

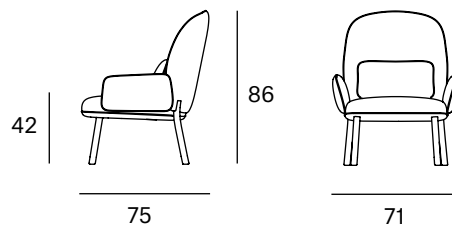
CUSHION: D. 25 kg S.S. polyurethane foam rubber covered with polyester fiber and cotton cover.

LEGS: Beech wood. Natural and black.

### Packaging

Measures	76x80x108	The product is delivered assembled.
Weight	20 kg	
Volume	0,55 m <sup>3</sup>	
Boxes	1 box	

### Dimensions



**ORIGIN** 100% Made in Spain

**PRODUCTION TIME** 4 weeks

**WARRANTY** 5 years

There is a five-year warranty against manufacturing defects (materials and workmanship). Wear and tear and damage to the product are not covered by this warranty. User claims under this warranty must be submitted to the distributor of the product.

# Finishes

MADE TO ORDER

## Upholstery Selection Blasco&Vila

### SOL Collection



Blossom



Steel



Ocre



Scarlet

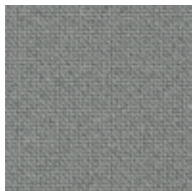


Blue

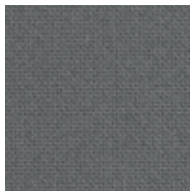


Turtle

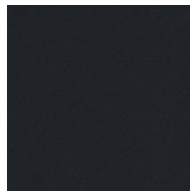
### MAR Collection



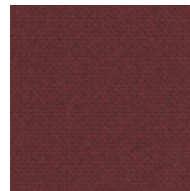
60112



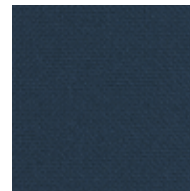
60110



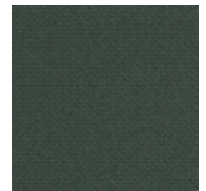
60111



64196

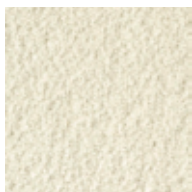


66170

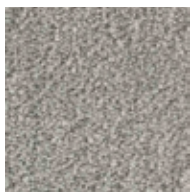


68182

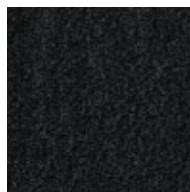
### BIO Collection



Ivory



Steel

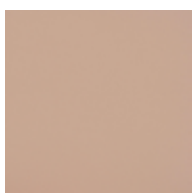


Onyx



Forest

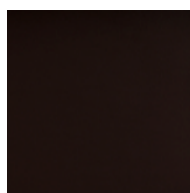
### ECO Collection



Lotus



Cognac



Mocca



Schwarz

### CUSTOM Endless customisation

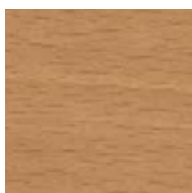
We can customise the product with any other upholstery:

Kvadrat  
Gabriel  
Camira  
Sunbrella  
Spradling  
Crevin  
*etc.*

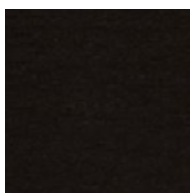
Fabric needed to upholster the product:

3,00 metres

## Beech Wood



Natural



Black

# Bench

Francesc Rifé

2019

Pol, a youthful breath of fresh air. A welcoming collection of endearing lines that give prominence to a generous ergonomic backrest. The arms incorporated in the external sphere, as fine surfaces that balance the entirety. While the legs, finished in wood, are the delicate counterpoint to the strength of a fully upholstered body. The rounded contours make it a soft piece and easily adaptable to any space.

Interior and industrial designer, Francesc Rifé founds his own studio in Barcelona in 1994. Influenced by minimalism and following a familiar tradition linked to craftsmanship, his work focuses on ways of approaching spatial order and proportion. Currently, Rifé leads a team of professionals from several design fields that has won several awards: Contract World, Red Dot, HiP in Chicago, ICFF Editors, FAD, Delta and several ASCER awards.







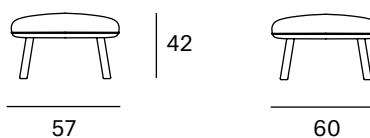
Ref: 270003

### Materials

SEAT: Wood seat with polyurethane foam rubber density 32 kg.

LEGS: Beech wood. Natural and black.

### Dimensions



### Packaging

Measures	65x62x47	The product is delivered assembled.
Weight	11 kg	
Volume	0,18 m <sup>3</sup>	
Boxes	1 box	

**ORIGIN** 100% Made in Spain

**PRODUCTION TIME** 4 weeks

**WARRANTY** 5 years

There is a five-year warranty against manufacturing defects (materials and workmanship). Wear and tear and damage to the product are not covered by this warranty. User claims under this warranty must be submitted to the distributor of the product.

# Finishes

MADE TO ORDER

## Upholstery Selection Blasco&Vila

### SOL Collection



Blossom



Steel



Ocre



Scarlet



Blue



Turtle

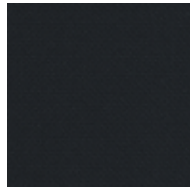
### MAR Collection



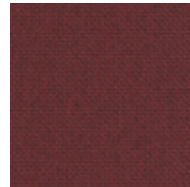
60112



60110



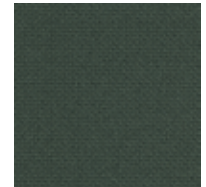
60111



64196



66170

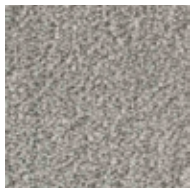


68182

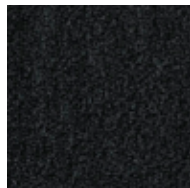
### BIO Collection



Ivory



Steel

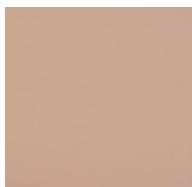


Onyx

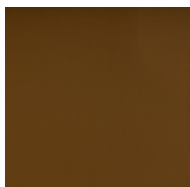


Forest

### ECO Collection



Lotus



Cognac



Mocca



Schwarz

### CUSTOM Endless customisation

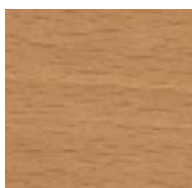
We can customise the product with any other upholstery:

Kvadrat  
Gabriel  
Camira  
Sunbrella  
Spradling  
Crevin  
*etc.*

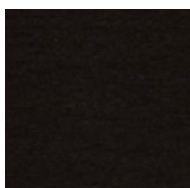
Fabric needed to upholster the product:

1,00 metre

## Beech Wood



Natural



Black



HOME DEKOR

— fashion furniture —

[www.home-dekor.com](http://www.home-dekor.com)