



HOME DEKOR

*fashion furniture*

B&V



IKON COLLECTION

[www.home-dekor.com](http://www.home-dekor.com)

# Armchair

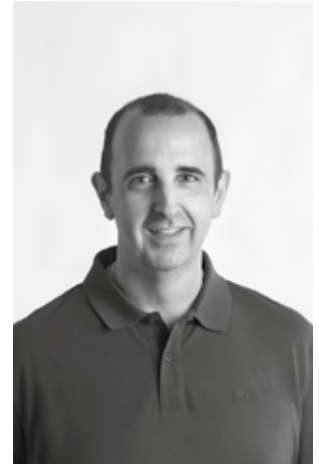
Alegre Design

2015

---

Ikon is the re-interpretation of the classic lines of the Chestfield sofa brought to the modern home and commercial use any space where a comfortable and elegant element can be placed.

Alegre Design is a design company founded in Valencia (Spain) in 2001, specialized in bringing innovation and value to people and companies through products and services. Over more than two years, Alegre Design has constantly faced design challenges that have resulted in professional collaboration on a global scale in industries that include furniture for workspaces, medical equipment, electronic products, lighting and childcare, amongst others.





Ref: 895105

### Materials

**STRUCTURE:** Solid board veneered in American walnut. Internal structure of black lacquered iron.

**SEAT:** Polyurethane foam rubber density 35 kg.

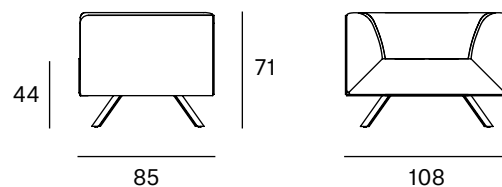
**BACK:** Polyurethane foam rubber density 35 kg. WITH CAPITONÉ TECHNIQUE.

**LEGS:** Black lacquered metal F1.

### Packaging

Measures	118x95x70	The product is delivered assembled.
Weight	150 kg	
Volume	0,80 m <sup>3</sup>	
Boxes	1 box	

### Dimensions



**ORIGIN** 100% Made in Spain

**PRODUCTION TIME** 4 weeks

**WARRANTY** 5 years

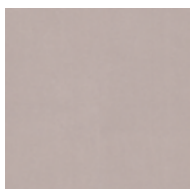
There is a five-year warranty against manufacturing defects (materials and workmanship). Wear and tear and damage to the product are not covered by this warranty. User claims under this warranty must be submitted to the distributor of the product.

# Finishes

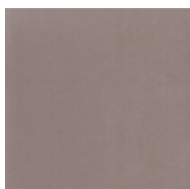
MADE TO ORDER

## Upholstery Selection Blasco&Vila

### SOL Collection



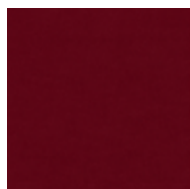
Blossom



Steel



Ocre



Scarlet

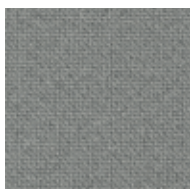


Blue

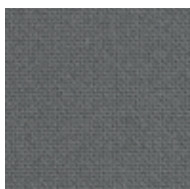


Turtle

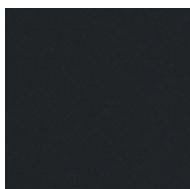
### MAR Collection



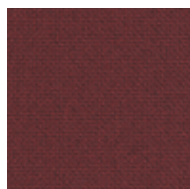
60112



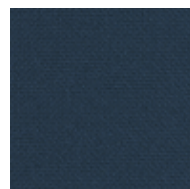
60110



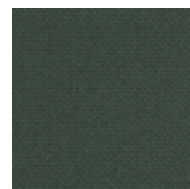
60111



64196



66170



68182

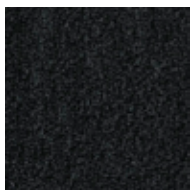
### BIO Collection



Ivory



Steel

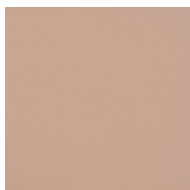


Onyx



Forest

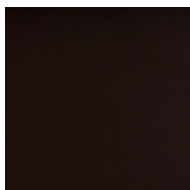
### ECO Collection



Lotus



Cognac



Mocca



Schwarz

### CUSTOM Endless customisation

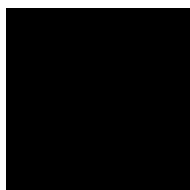
We can customise the product with any other upholstery:

Kvadrat  
Gabriel  
Camira  
Sunbrella  
Spradling  
Crevin  
*etc.*

Fabric needed to upholster the product:

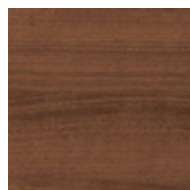
5,00 metres

### Metal



Black

### Walnut Wood



Natural

# 2 seater sofa

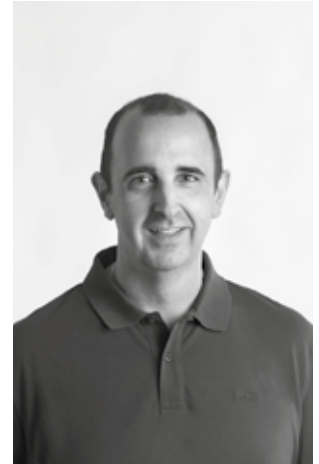
Alegre Design

2015

---

Ikon is the re-interpretation of the classic lines of the Chestfield sofa brought to the modern home and commercial use any space where a comfortable and elegant element can be placed.

Alegre Design is a design company founded in Valencia (Spain) in 2001, specialized in bringing innovation and value to people and companies through products and services. Over more than two years, Alegre Design has constantly faced design challenges that have resulted in professional collaboration on a global scale in industries that include furniture for workspaces, medical equipment, electronic products, lighting and childcare, amongst others.





Ref: 895103

### Materials

STRUCTURE: Solid board veneered in American walnut. Internal structure of black lacquered iron.

SEAT: Polyurethane foam rubber density 35 kg.

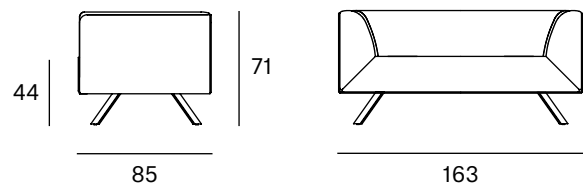
BACK: Polyurethane foam rubber density 35 kg. WITH CAPITONÉ TECHNIQUE.

LEGS: Black lacquered metal F1.

### Packaging

Measures	173x95x70	The product is delivered assembled.
Weight	200 kg	
Volume	1,15 m <sup>3</sup>	
Boxes	1 box	

### Dimensions



**ORIGIN** 100% Made in Spain

**PRODUCTION TIME** 4 weeks

**WARRANTY** 5 years

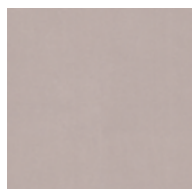
There is a five-year warranty against manufacturing defects (materials and workmanship). Wear and tear and damage to the product are not covered by this warranty. User claims under this warranty must be submitted to the distributor of the product.

# Finishes

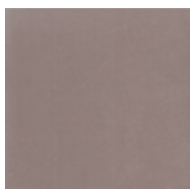
MADE TO ORDER

## Upholstery Selection Blasco&Vila

### SOL Collection



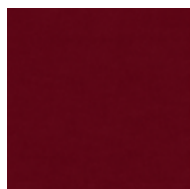
Blossom



Steel



Ocre



Scarlet

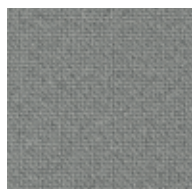


Blue

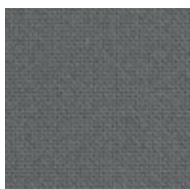


Turtle

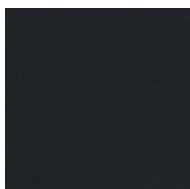
### MAR Collection



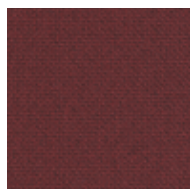
60112



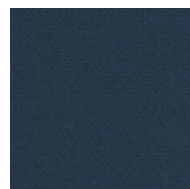
60110



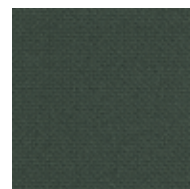
60111



64196



66170



68182

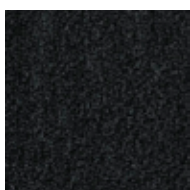
### BIO Collection



Ivory



Steel

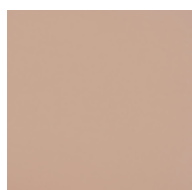


Onyx



Forest

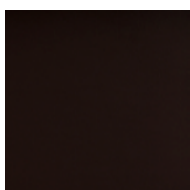
### ECO Collection



Lotus



Cognac



Mocca



Schwarz

### CUSTOM Endless customisation

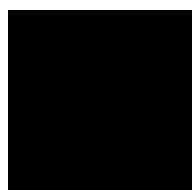
We can customise the product with any other upholstery:

Kvadrat  
Gabriel  
Camira  
Sunbrella  
Spradling  
Crevin  
*etc.*

Fabric needed to upholster the product:

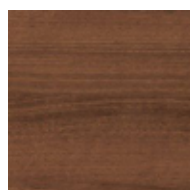
6,00 metres

### Metal



Black

### Walnut Wood



Natural

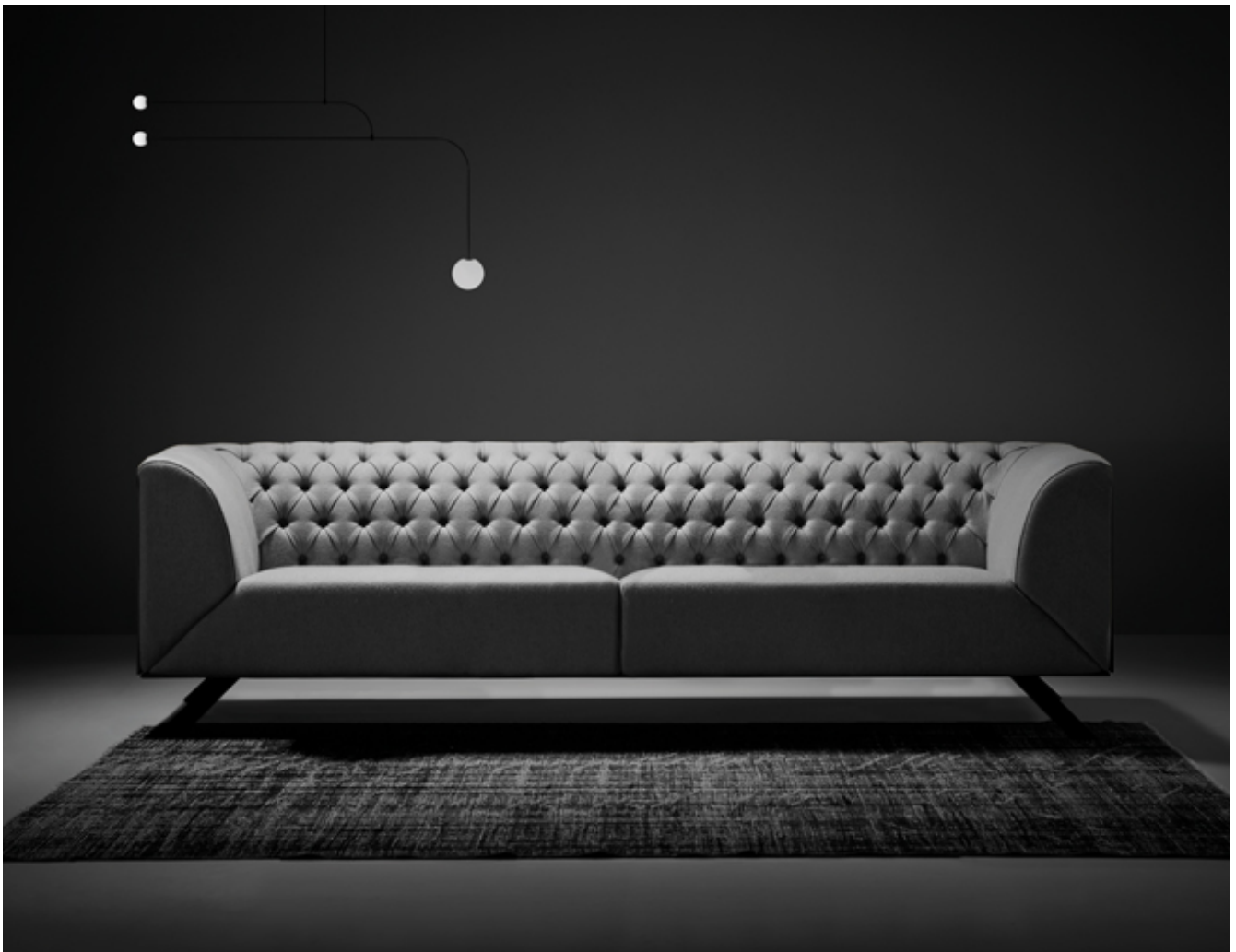
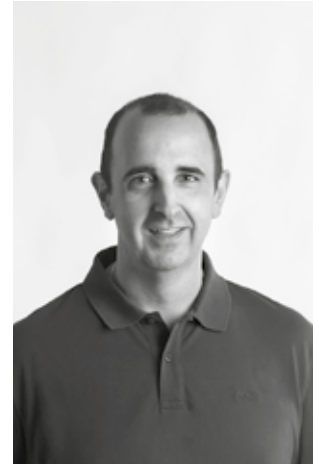
# 3 seater sofa

Alegre Design

2015

Ikon is the re-interpretation of the classic lines of the Chestfield sofa brought to the modern home and commercial use any space where a comfortable and elegant element can be placed.

Alegre Design is a design company founded in Valencia (Spain) in 2001, specialized in bringing innovation and value to people and companies through products and services. Over more than two years, Alegre Design has constantly faced design challenges that have resulted in professional collaboration on a global scale in industries that include furniture for workspaces, medical equipment, electronic products, lighting and childcare, amongst others.







Ref: 895104

### Materials

STRUCTURE: Solid board veneered in American walnut. Internal structure of black lacquered iron.

SEAT: Polyurethane foam rubber density 35 kg.

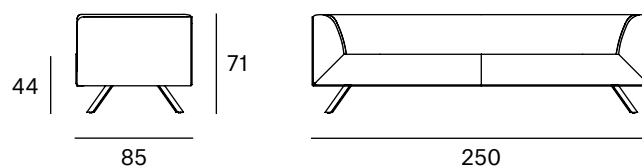
BACK: Polyurethane foam rubber density 35 kg. WITH CAPITONÉ TECHNIQUE.

LEGS: Black lacquered metal F1.

### Packaging

Measures	260x95x70	The product is delivered assembled.
Weight	250 kg	
Volume	1,75 m <sup>3</sup>	
Boxes	1 box	

### Dimensions



**ORIGIN** 100% Made in Spain

**PRODUCTION TIME** 4 weeks

**WARRANTY** 5 years

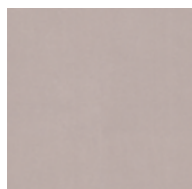
There is a five-year warranty against manufacturing defects (materials and workmanship). Wear and tear and damage to the product are not covered by this warranty. User claims under this warranty must be submitted to the distributor of the product.

# Finishes

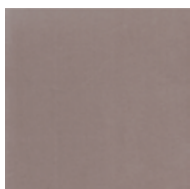
MADE TO ORDER

## Upholstery Selection Blasco&Vila

### SOL Collection



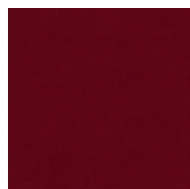
Blossom



Steel



Ocre



Scarlet

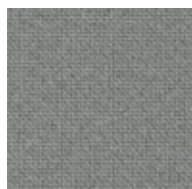


Blue

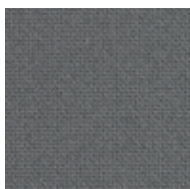


Turtle

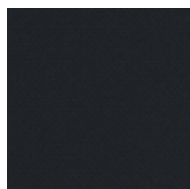
### MAR Collection



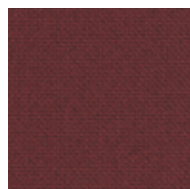
60112



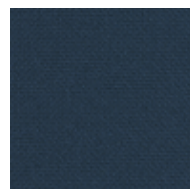
60110



60111



64196



66170



68182

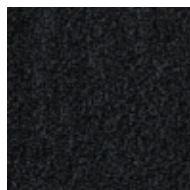
### BIO Collection



Ivory



Steel

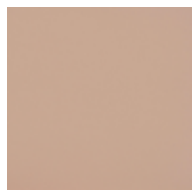


Onyx



Forest

### ECO Collection



Lotus



Cognac



Mocca



Schwarz

### CUSTOM Endless customisation

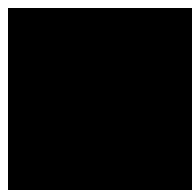
We can customise the product with any other upholstery:

Kvadrat  
Gabriel  
Camira  
Sunbrella  
Spradling  
Crevin  
*etc.*

Fabric needed to upholster the product:

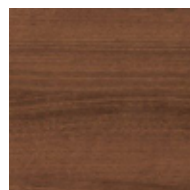
8,00 metres

### Metal



Black

### Walnut Wood



Natural



HOME DEKOR

— fashion furniture —

[www.home-dekor.com](http://www.home-dekor.com)