



HOME DEKOR

fashion furniture



HARDY COLLECTION

www.home-dekor.com

Armchair

estudi{H}ac

2019

The design has emphasised comfort and any tendency towards exaggeration and bulkiness has been eliminated. The result is an elegant and timeless 'look&feel' with a personal touch that is suggested by the scope of textile options. Its characteristic seat back is a hallmark of uniqueness. The armrests are inspired in the refined cuffs of tailored suits. We are drawn to beautifully crafted buttons and buttonholes at the sides. Hardy has been designed as a modular seating system.

Creative studio specialized in "bespoke" projects of product design, interior architecture and the creation of ephemeral montages. Tailor, unique, timeless products and projects that amaze onlookers thanks to their initial visual impact and the story behind them. The basis of each project lies in the initial concept, which is where José Manuel Ferrero and his team come up with the story behind each project.





Ref: 140000

Materials

STRUCTURE: Wooden seating frame with strap-like webbing covered with polyurethane foam rubber. The backrest and armrests are made of metal tubing covered with fire-retardant polyurethane (UNE EN 1021-2:06/BS 5852:06) D 60kg.

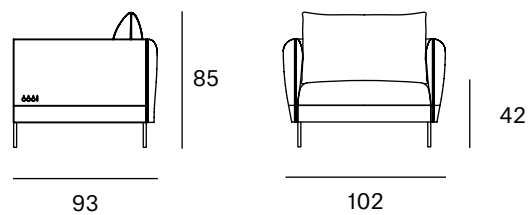
SEAT: D. 35 kg polyurethane foam rubber covered with polyester fiber and cotton cover.

BACK: D. 25 kg S.S. polyurethane foam rubber covered with polyester fiber and cotton cover.

LEGS: Black lacquered metal F1.

Packaging

Measures	107x98x75	The product is delivered assembled.
Weight	40 kg	
Volume	0,79 m ³	
Boxes	1 box	

Dimensions

ORIGIN 100% Made in Spain**PRODUCTION TIME** 4 weeks**WARRANTY** 5 years

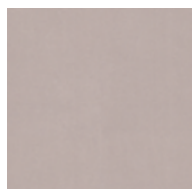
There is a five-year warranty against manufacturing defects (materials and workmanship). Wear and tear and damage to the product are not covered by this warranty. User claims under this warranty must be submitted to the distributor of the product.

Finishes

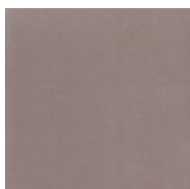
MADE TO ORDER

Upholstery Selection Blasco&Vila

SOL Collection



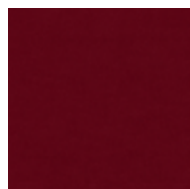
Blossom



Steel



Ocre



Scarlet

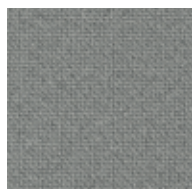


Blue

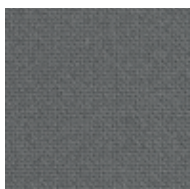


Turtle

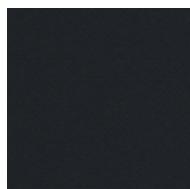
MAR Collection



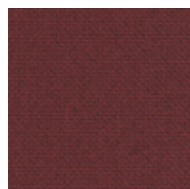
60112



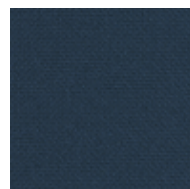
60110



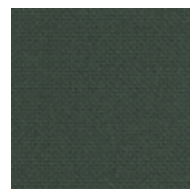
60111



64196



66170



68182

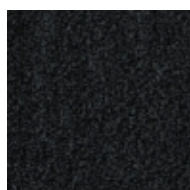
BIO Collection



Ivory



Steel

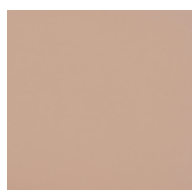


Onyx



Forest

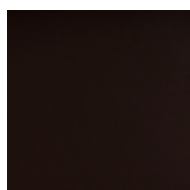
ECO Collection



Lotus



Cognac



Mocca



Schwarz

CUSTOM Endless customisation

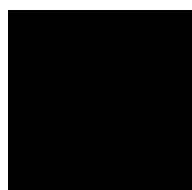
We can customise the product with any other upholstery:

Kvadrat
Gabriel
Camira
Sunbrella
Spradling
Crevin
etc.

Fabric needed to upholster the product:

7,00 metres

Metal



Black

Button



Black

2 seater sofa

estudi{H}ac

2019

The design has emphasised comfort and any tendency towards exaggeration and bulkiness has been eliminated. The result is an elegant and timeless 'look&feel' with a personal touch that is suggested by the scope of textile options. Its characteristic seat back is a hallmark of uniqueness. The armrests are inspired in the refined cuffs of tailored suits. We are drawn to beautifully crafted buttons and buttonholes at the sides. Hardy has been designed as a modular seating system.

Creative studio specialized in "bespoke" projects of product design, interior architecture and the creation of ephemeral montages. Tailor, unique, timeless products and projects that amaze onlookers thanks to their initial visual impact and the story behind them. The basis of each project lies in the initial concept, which is where José Manuel Ferrero and his team come up with the story behind each project.





Ref: 140002

Materials

STRUCTURE: Wooden seating frame with strap-like webbing covered with polyurethane foam rubber. The backrest and armrests are made of metal tubing covered with fire-retardant polyurethane (UNE EN 1021-2:06/BS 5852:06) D 60kg.

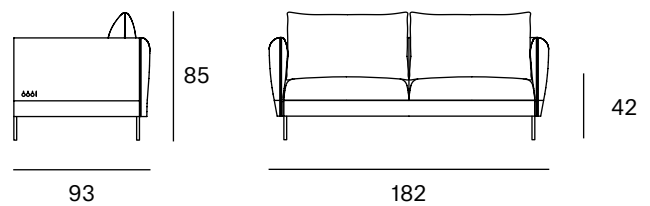
SEAT: D. 35 kg polyurethane foam rubber covered with polyester fiber and cotton cover.

BACK: D. 25 kg S.S. polyurethane foam rubber covered with polyester fiber and cotton cover.

LEGS: Black lacquered metal F1.

Packaging

Measures	187x98x75	The product is delivered assembled.
Weight	62 kg	
Volume	1,37 m ³	
Boxes	1 box	

Dimensions

ORIGIN 100% Made in Spain**PRODUCTION TIME** 4 weeks**WARRANTY** 5 years

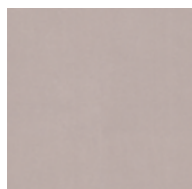
There is a five-year warranty against manufacturing defects (materials and workmanship). Wear and tear and damage to the product are not covered by this warranty. User claims under this warranty must be submitted to the distributor of the product.

Finishes

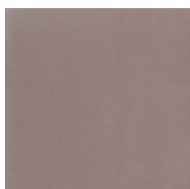
MADE TO ORDER

Upholstery Selection Blasco&Vila

SOL Collection



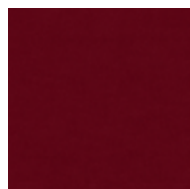
Blossom



Steel



Ocre



Scarlet

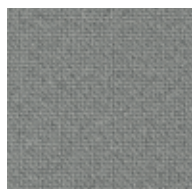


Blue

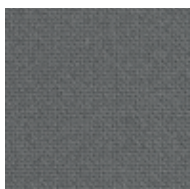


Turtle

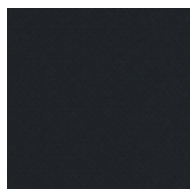
MAR Collection



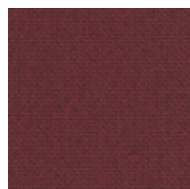
60112



60110



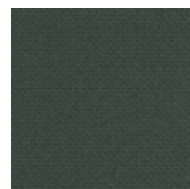
60111



64196



66170



68182

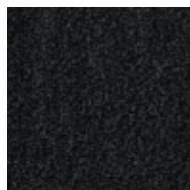
BIO Collection



Ivory



Steel

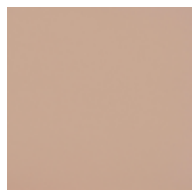


Onyx



Forest

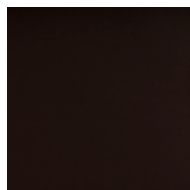
ECO Collection



Lotus



Cognac



Mocca



Schwarz

CUSTOM Endless customisation

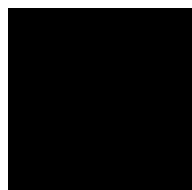
We can customise the product with any other upholstery:

Kvadrat
Gabriel
Camira
Sunbrella
Spradling
Crevin
etc.

Fabric needed to upholster the product:

11,00 metres

Metal



Black

Button



Black

3 seater sofa

estudi{H}ac

2019

The design has emphasised comfort and any tendency towards exaggeration and bulkiness has been eliminated. The result is an elegant and timeless 'look&feel' with a personal touch that is suggested by the scope of textile options. Its characteristic seat back is a hallmark of uniqueness. The armrests are inspired in the refined cuffs of tailored suits. We are drawn to beautifully crafted buttons and buttonholes at the sides. Hardy has been designed as a modular seating system.

Creative studio specialized in "bespoke" projects of product design, interior architecture and the creation of ephemeral montages. Tailor, unique, timeless products and projects that amaze onlookers thanks to their initial visual impact and the story behind them. The basis of each project lies in the initial concept, which is where José Manuel Ferrero and his team come up with the story behind each project.





Ref: 140001

Materials

STRUCTURE: Wooden seating frame with strap-like webbing covered with polyurethane foam rubber. The backrest and armrests are made of metal tubing covered with fire-retardant polyurethane (UNE EN 1021-2:06/BS 5852:06) D 60kg.

SEAT: D. 35 kg polyurethane foam rubber covered with polyester fiber and cotton cover.

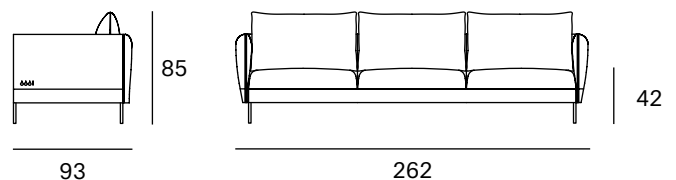
BACK: D. 25 kg S.S. polyurethane foam rubber covered with polyester fiber and cotton cover.

LEGS: Black lacquered metal F1.

Packaging

Measures	267x98x75	The product is delivered assembled.
Weight	82 kg	
Volume	1,96 m ³	
Boxes	1 box	

Dimensions



ORIGIN 100% Made in Spain

PRODUCTION TIME 4 weeks

WARRANTY 5 years

There is a five-year warranty against manufacturing defects (materials and workmanship). Wear and tear and damage to the product are not covered by this warranty. User claims under this warranty must be submitted to the distributor of the product.

Finishes

MADE TO ORDER

Upholstery Selection Blasco&Vila

SOL Collection



Blossom



Steel



Ocre



Scarlet



Blue



Turtle

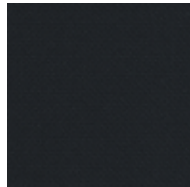
MAR Collection



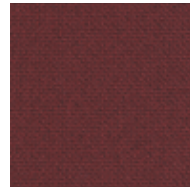
60112



60110



60111



64196



66170

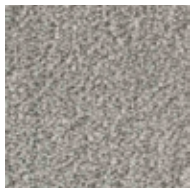


68182

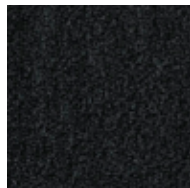
BIO Collection



Ivory



Steel

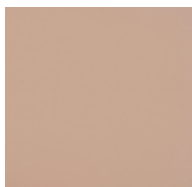


Onyx



Forest

ECO Collection



Lotus



Cognac



Mocca



Schwarz

CUSTOM Endless customisation

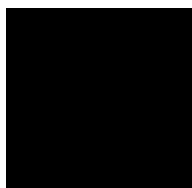
We can customise the product with any other upholstery:

Kvadrat
Gabriel
Camira
Sunbrella
Spradling
Crevin
etc.

Fabric needed to upholster the product:

14,00 metres

Metal



Black

Button



Black

Divan

estudi{H}ac

2019

The design has emphasised comfort and any tendency towards exaggeration and bulkiness has been eliminated. The result is an elegant and timeless 'look&feel' with a personal touch that is suggested by the scope of textile options. Its characteristic seat back is a hallmark of uniqueness. The armrests are inspired in the refined cuffs of tailored suits. We are drawn to beautifully crafted buttons and buttonholes at the sides. Hardy has been designed as a modular seating system.

Creative studio specialized in "bespoke" projects of product design, interior architecture and the creation of ephemeral montages. Tailor, unique, timeless products and projects that amaze onlookers thanks to their initial visual impact and the story behind them. The basis of each project lies in the initial concept, which is where José Manuel Ferrero and his team come up with the story behind each project.





Ref: 140006

Materials

STRUCTURE: Wooden seating frame with strap-like webbing covered with polyurethane foam rubber. The backrest and armrests are made of metal tubing covered with fire-retardant polyurethane (UNE EN 1021-2:06/BS 5852:06) D 60kg.

SEAT: D. 35 kg polyurethane foam rubber covered with polyester fiber and cotton cover.

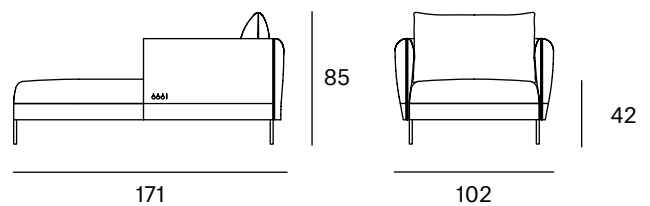
BACK: D. 25 kg S.S. polyurethane foam rubber covered with polyester fiber and cotton cover.

LEGS: Black lacquered metal F1.

Packaging

Measures	176x107x75	The product is delivered assembled.
Weight	55 kg	
Volume	1,41 m ³	
Boxes	1 box	

Dimensions



ORIGIN 100% Made in Spain

PRODUCTION TIME 4 weeks

WARRANTY 5 years

There is a five-year warranty against manufacturing defects (materials and workmanship). Wear and tear and damage to the product are not covered by this warranty. User claims under this warranty must be submitted to the distributor of the product.

Finishes

MADE TO ORDER

Upholstery Selection Blasco&Vila

SOL Collection



Blossom



Steel



Ocre



Scarlet



Blue



Turtle

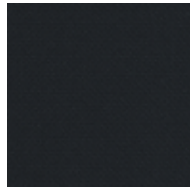
MAR Collection



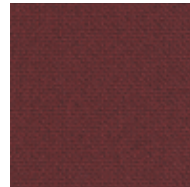
60112



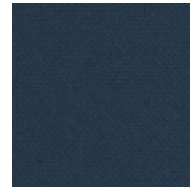
60110



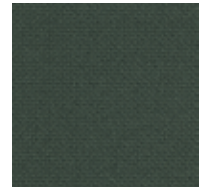
60111



64196



66170

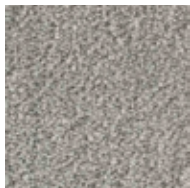


68182

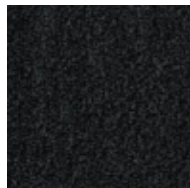
BIO Collection



Ivory



Steel

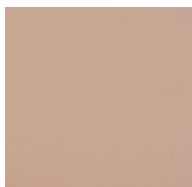


Onyx

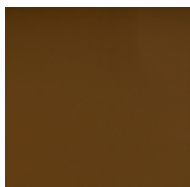


Forest

ECO Collection



Lotus



Cognac



Mocca



Schwarz

CUSTOM Endless customisation

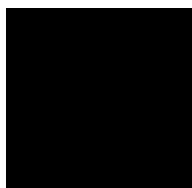
We can customise the product with any other upholstery:

Kvadrat
Gabriel
Camira
Sunbrella
Spradling
Crevin
etc.

Fabric needed to upholster the product:

10,00 metres

Metal



Black

Button



Black

Bench 80

estudi{H}ac

2019

The design has emphasised comfort and any tendency towards exaggeration and bulkiness has been eliminated. The result is an elegant and timeless 'look&feel' with a personal touch that is suggested by the scope of textile options. Its characteristic seat back is a hallmark of uniqueness. The armrests are inspired in the refined cuffs of tailored suits. We are drawn to beautifully crafted buttons and buttonholes at the sides. Hardy has been designed as a modular seating system.

Creative studio specialized in "bespoke" projects of product design, interior architecture and the creation of ephemeral montages. Tailor, unique, timeless products and projects that amaze onlookers thanks to their initial visual impact and the story behind them. The basis of each project lies in the initial concept, which is where José Manuel Ferrero and his team come up with the story behind each project.





Ref: 140003

Materials

STRUCTURE: Wooden seating frame with strap-like webbing covered with polyurethane foam rubber. The backrest and armrests are made of metal tubing covered with fire-retardant polyurethane (UNE EN 1021-2:06/BS 5852:06) D 60kg.

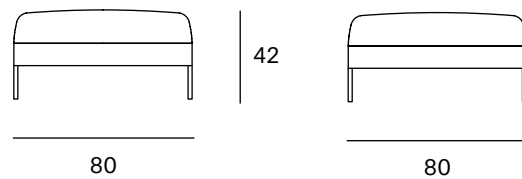
SEAT: D. 35 kg polyurethane foam rubber covered with polyester fiber and cotton cover.

LEGS: Black lacquered metal F1.

Packaging

Measures	85x85x47	The product is delivered assembled.
Weight	16 kg	
Volume	0,33 m ³	
Boxes	1 box	

Dimensions



ORIGIN 100% Made in Spain

PRODUCTION TIME 4 weeks

WARRANTY 5 years

There is a five-year warranty against manufacturing defects (materials and workmanship). Wear and tear and damage to the product are not covered by this warranty. User claims under this warranty must be submitted to the distributor of the product.

Finishes

MADE TO ORDER

Upholstery Selection Blasco&Vila

SOL Collection



Blossom



Steel



Ocre



Scarlet



Blue



Turtle

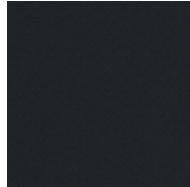
MAR Collection



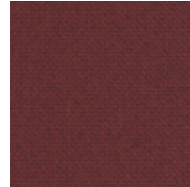
60112



60110



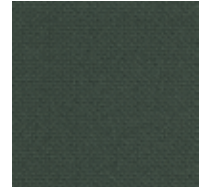
60111



64196



66170

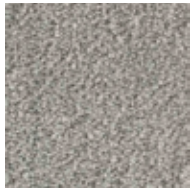


68182

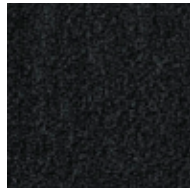
BIO Collection



Ivory



Steel

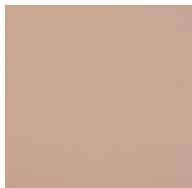


Onyx



Forest

ECO Collection



Lotus



Cognac



Mocca



Schwarz

CUSTOM Endless customisation

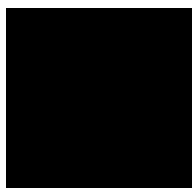
We can customise the product with any other upholstery:

Kvadrat
Gabriel
Camira
Sunbrella
Spradling
Crevin
etc.

Fabric needed to upholster the product:

3,00 metres

Metal



Black

Button



Black

Bench 160

estudi{H}ac

2019

The design has emphasised comfort and any tendency towards exaggeration and bulkiness has been eliminated. The result is an elegant and timeless 'look&feel' with a personal touch that is suggested by the scope of textile options. Its characteristic seat back is a hallmark of uniqueness. The armrests are inspired in the refined cuffs of tailored suits. We are drawn to beautifully crafted buttons and buttonholes at the sides. Hardy has been designed as a modular seating system.

Creative studio specialized in "bespoke" projects of product design, interior architecture and the creation of ephemeral montages. Tailor, unique, timeless products and projects that amaze onlookers thanks to their initial visual impact and the story behind them. The basis of each project lies in the initial concept, which is where José Manuel Ferrero and his team come up with the story behind each project.





Ref: 140004

Materials

STRUCTURE: Wooden seating frame with strap-like webbing covered with polyurethane foam rubber. The backrest and armrests are made of metal tubing covered with fire-retardant polyurethane (UNE EN 1021-2:06/BS 5852:06) D 60kg.

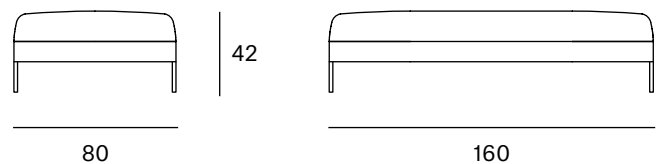
SEAT: D. 35 kg polyurethane foam rubber covered with polyester fiber and cotton cover.

LEGS: Black lacquered metal F1.

Packaging

Measures	165x85x47	The product is delivered assembled.
Weight	31 kg	
Volume	0,63 m ³	
Boxes	1 box	

Dimensions



ORIGIN 100% Made in Spain

PRODUCTION TIME 4 weeks

WARRANTY 5 years

There is a five-year warranty against manufacturing defects (materials and workmanship). Wear and tear and damage to the product are not covered by this warranty. User claims under this warranty must be submitted to the distributor of the product.

Finishes

MADE TO ORDER

Upholstery Selection Blasco&Vila

SOL Collection



Blossom



Steel



Ocre



Scarlet



Blue



Turtle

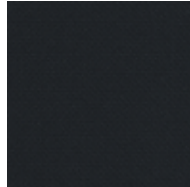
MAR Collection



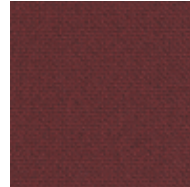
60112



60110



60111



64196



66170

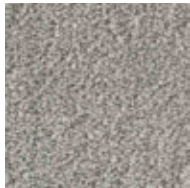


68182

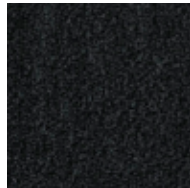
BIO Collection



Ivory



Steel

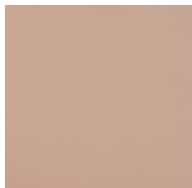


Onyx



Forest

ECO Collection



Lotus



Cognac



Mocca



Schwarz

CUSTOM Endless customisation

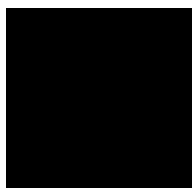
We can customise the product with any other upholstery:

Kvadrat
Gabriel
Camira
Sunbrella
Spradling
Crevin
etc.

Fabric needed to upholster the product:

5,00 metres

Metal



Black

Button



Black

Chaise Longue left

estudi{H}ac

2019

The design has emphasised comfort and any tendency towards exaggeration and bulkiness has been eliminated. The result is an elegant and timeless 'look&feel' with a personal touch that is suggested by the scope of textile options. Its characteristic seat back is a hallmark of uniqueness. The armrests are inspired in the refined cuffs of tailored suits. We are drawn to beautifully crafted buttons and buttonholes at the sides. Hardy has been designed as a modular seating system.

Creative studio specialized in "bespoke" projects of product design, interior architecture and the creation of ephemeral montages. Tailor, unique, timeless products and projects that amaze onlookers thanks to their initial visual impact and the story behind them. The basis of each project lies in the initial concept, which is where José Manuel Ferrero and his team come up with the story behind each project.





Ref: 140011

Materials

STRUCTURE: Wooden seating frame with strap-like webbing covered with polyurethane foam rubber. The backrest and armrests are made of metal tubing covered with fire-retardant polyurethane (UNE EN 1021-2:06/BS 5852:06) D 60kg.

SEAT: D. 35 kg polyurethane foam rubber covered with polyester fiber and cotton cover.

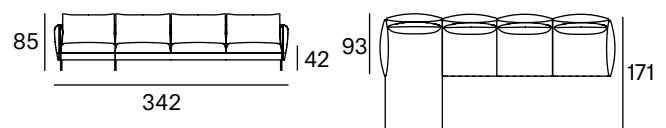
BACK: D. 25 kg S.S. polyurethane foam rubber covered with polyester fiber and cotton cover.

LEGS: Black lacquered metal F1.

Packaging

Measures box 1	255x95x70
Measures box 2	175x95x70
Weight	116 kg
Volume	2,85 m ³
Boxes	2 boxes

The product is delivered assembled, ready to join with a single click.

Dimensions

ORIGIN 100% Made in Spain**PRODUCTION TIME** 4 weeks**WARRANTY** 5 years

There is a five-year warranty against manufacturing defects (materials and workmanship). Wear and tear and damage to the product are not covered by this warranty. User claims under this warranty must be submitted to the distributor of the product.

Finishes

MADE TO ORDER

Upholstery Selection Blasco&Vila

SOL Collection



Blossom



Steel



Ocre



Scarlet



Blue

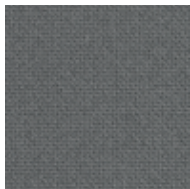


Turtle

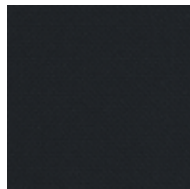
MAR Collection



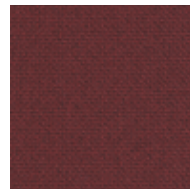
60112



60110



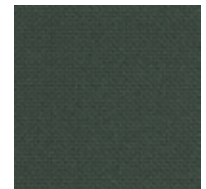
60111



64196



66170



68182

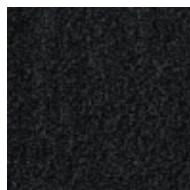
BIO Collection



Ivory



Steel

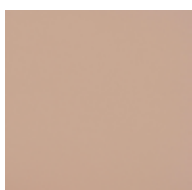


Onyx



Forest

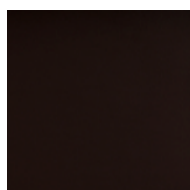
ECO Collection



Lotus



Cognac



Mocca



Schwarz

CUSTOM Endless customisation

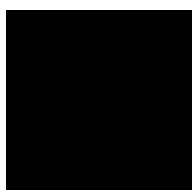
We can customise the product with any other upholstery:

Kvadrat
Gabriel
Camira
Sunbrella
Spradling
Crevin
etc.

Fabric needed to upholster the product:

22,00 metres

Metal



Black

Button



Black

Chaise Longue right

estudi{H}ac

2019

The design has emphasised comfort and any tendency towards exaggeration and bulkiness has been eliminated. The result is an elegant and timeless 'look&feel' with a personal touch that is suggested by the scope of textile options. Its characteristic seat back is a hallmark of uniqueness. The armrests are inspired in the refined cuffs of tailored suits. We are drawn to beautifully crafted buttons and buttonholes at the sides. Hardy has been designed as a modular seating system.

Creative studio specialized in "bespoke" projects of product design, interior architecture and the creation of ephemeral montages. Tailor, unique, timeless products and projects that amaze onlookers thanks to their initial visual impact and the story behind them. The basis of each project lies in the initial concept, which is where José Manuel Ferrero and his team come up with the story behind each project.





Ref: 140012

Materials

STRUCTURE: Wooden seating frame with strap-like webbing covered with polyurethane foam rubber. The backrest and armrests are made of metal tubing covered with fire-retardant polyurethane (UNE EN 1021-2:06/BS 5852:06) D 60kg.

SEAT: D. 35 kg polyurethane foam rubber covered with polyester fiber and cotton cover.

BACK: D. 25 kg S.S. polyurethane foam rubber covered with polyester fiber and cotton cover.

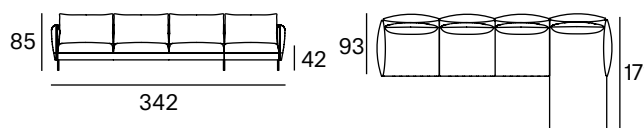
LEGS: Black lacquered metal F1.

Packaging

Measures box 1	255x95x70
Measures box 2	175x95x70
Weight	116 kg
Volume	2,85 m ³
Boxes	2 boxes

The product is delivered assembled, ready to join with a single click.

Dimensions



ORIGIN 100% Made in Spain

PRODUCTION TIME 4 weeks

WARRANTY 5 years

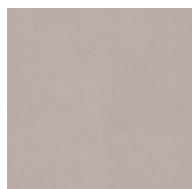
There is a five-year warranty against manufacturing defects (materials and workmanship). Wear and tear and damage to the product are not covered by this warranty. User claims under this warranty must be submitted to the distributor of the product.

Finishes

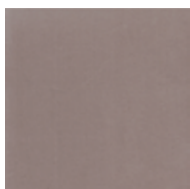
MADE TO ORDER

Upholstery Selection Blasco&Vila

SOL Collection



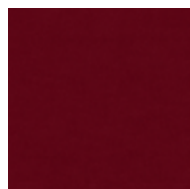
Blossom



Steel



Ocre



Scarlet



Blue

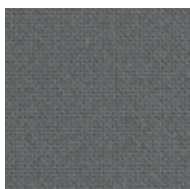


Turtle

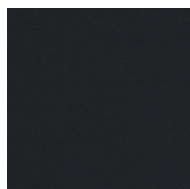
MAR Collection



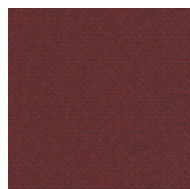
60112



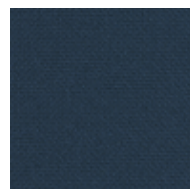
60110



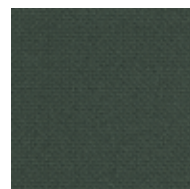
60111



64196



66170



68182

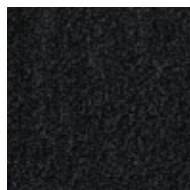
BIO Collection



Ivory



Steel

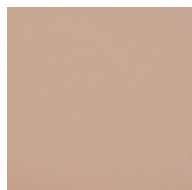


Onyx



Forest

ECO Collection



Lotus



Cognac



Mocca



Schwarz

CUSTOM Endless customisation

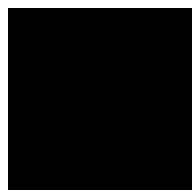
We can customise the product with any other upholstery:

Kvadrat
Gabriel
Camira
Sunbrella
Spradling
Crevin
etc.

Fabric needed to upholster the product:

22,00 metres

Metal



Black

Button



Black

Meridienne left

estudi{H}ac

2019

The design has emphasised comfort and any tendency towards exaggeration and bulkiness has been eliminated. The result is an elegant and timeless 'look&feel' with a personal touch that is suggested by the scope of textile options. Its characteristic seat back is a hallmark of uniqueness. The armrests are inspired in the refined cuffs of tailored suits. We are drawn to beautifully crafted buttons and buttonholes at the sides. Hardy has been designed as a modular seating system.

Creative studio specialized in "bespoke" projects of product design, interior architecture and the creation of ephemeral montages. Tailor, unique, timeless products and projects that amaze onlookers thanks to their initial visual impact and the story behind them. The basis of each project lies in the initial concept, which is where José Manuel Ferrero and his team come up with the story behind each project.





Ref: 140021

Materials

STRUCTURE: Wooden seating frame with strap-like webbing covered with polyurethane foam rubber. The backrest and armrests are made of metal tubing covered with fire-retardant polyurethane (UNE EN 1021-2:06/BS 5852:06) D 60kg.

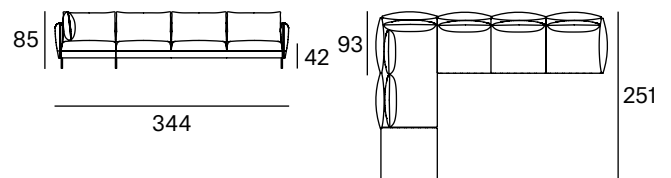
SEAT: D. 35 kg polyurethane foam rubber covered with polyester fiber and cotton cover.

BACK: D. 25 kg S.S. polyurethane foam rubber covered with polyester fiber and cotton cover.

LEGS: Black lacquered metal F1.

Packaging

Measures box 1	255x95x70	The product is delivered assembled, ready to join with a single click.
Measures box 2	255x95x70	
Weight	142 kg	
Volume	3,40 m ³	
Boxes	2 boxes	

Dimensions

ORIGIN 100% Made in Spain**PRODUCTION TIME** 4 weeks**WARRANTY** 5 years

There is a five-year warranty against manufacturing defects (materials and workmanship). Wear and tear and damage to the product are not covered by this warranty. User claims under this warranty must be submitted to the distributor of the product.

Finishes

MADE TO ORDER

Upholstery Selection Blasco&Vila

SOL Collection



Blossom



Steel



Ocre



Scarlet



Blue



Turtle

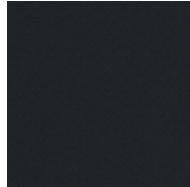
MAR Collection



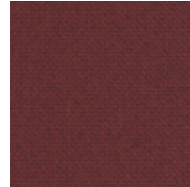
60112



60110



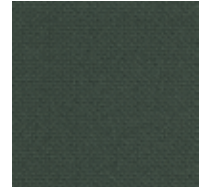
60111



64196



66170



68182

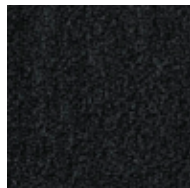
BIO Collection



Ivory



Steel

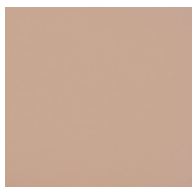


Onyx



Forest

ECO Collection



Lotus



Cognac



Mocca



Schwarz

CUSTOM Endless customisation

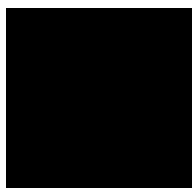
We can customise the product with any other upholstery:

Kvadrat
Gabriel
Camira
Sunbrella
Spradling
Crevin
etc.

Fabric needed to upholster the product:

25,00 metres

Metal



Black

Button



Black

Meridienne right

estudi{H}ac

2019

The design has emphasised comfort and any tendency towards exaggeration and bulkiness has been eliminated. The result is an elegant and timeless 'look&feel' with a personal touch that is suggested by the scope of textile options. Its characteristic seat back is a hallmark of uniqueness. The armrests are inspired in the refined cuffs of tailored suits. We are drawn to beautifully crafted buttons and buttonholes at the sides. Hardy has been designed as a modular seating system.

Creative studio specialized in "bespoke" projects of product design, interior architecture and the creation of ephemeral montages. Tailor, unique, timeless products and projects that amaze onlookers thanks to their initial visual impact and the story behind them. The basis of each project lies in the initial concept, which is where José Manuel Ferrero and his team come up with the story behind each project.





Ref: 140022

Materials

STRUCTURE: Wooden seating frame with strap-like webbing covered with polyurethane foam rubber. The backrest and armrests are made of metal tubing covered with fire-retardant polyurethane (UNE EN 1021-2:06/BS 5852:06) D 60kg.

SEAT: D. 35 kg polyurethane foam rubber covered with polyester fiber and cotton cover.

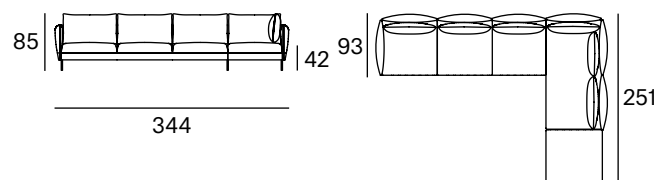
BACK: D. 25 kg S.S. polyurethane foam rubber covered with polyester fiber and cotton cover.

LEGS: Black lacquered metal F1.

Packaging

Measures box 1	255x95x70	The product is delivered assembled, ready to join with a single click.
Measures box 2	255x95x70	
Weight	142 kg	
Volume	3,40 m ³	
Boxes	2 boxes	

Dimensions



ORIGIN 100% Made in Spain

PRODUCTION TIME 4 weeks

WARRANTY 5 years

There is a five-year warranty against manufacturing defects (materials and workmanship). Wear and tear and damage to the product are not covered by this warranty. User claims under this warranty must be submitted to the distributor of the product.

Finishes

MADE TO ORDER

Upholstery Selection Blasco&Vila

SOL Collection



Blossom



Steel



Ocre



Scarlet



Blue

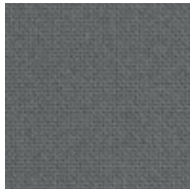


Turtle

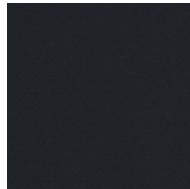
MAR Collection



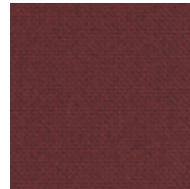
60112



60110



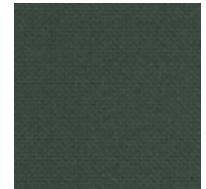
60111



64196



66170

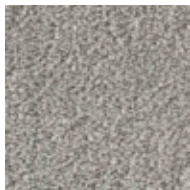


68182

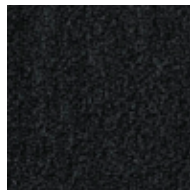
BIO Collection



Ivory



Steel

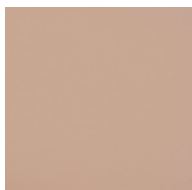


Onyx



Forest

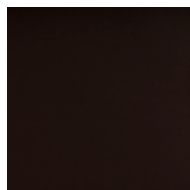
ECO Collection



Lotus



Cognac



Mocca



Schwarz

CUSTOM Endless customisation

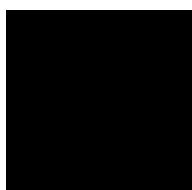
We can customise the product with any other upholstery:

Kvadrat
Gabriel
Camira
Sunbrella
Spradling
Crevin
etc.

Fabric needed to upholster the product:

25,00 metres

Metal



Black

Button



Black

Corner sofa

estudi{H}ac

2019

The design has emphasised comfort and any tendency towards exaggeration and bulkiness has been eliminated. The result is an elegant and timeless 'look&feel' with a personal touch that is suggested by the scope of textile options. Its characteristic seat back is a hallmark of uniqueness. The armrests are inspired in the refined cuffs of tailored suits. We are drawn to beautifully crafted buttons and buttonholes at the sides. Hardy has been designed as a modular seating system.

Creative studio specialized in "bespoke" projects of product design, interior architecture and the creation of ephemeral montages. Tailor, unique, timeless products and projects that amaze onlookers thanks to their initial visual impact and the story behind them. The basis of each project lies in the initial concept, which is where José Manuel Ferrero and his team come up with the story behind each project.





Ref: 140033

Materials

STRUCTURE: Wooden seating frame with strap-like webbing covered with polyurethane foam rubber. The backrest and armrests are made of metal tubing covered with fire-retardant polyurethane (UNE EN 1021-2:06/BS 5852:06) D 60kg.

SEAT: D. 35 kg polyurethane foam rubber covered with polyester fiber and cotton cover.

BACK: D. 25 kg S.S. polyurethane foam rubber covered with polyester fiber and cotton cover.

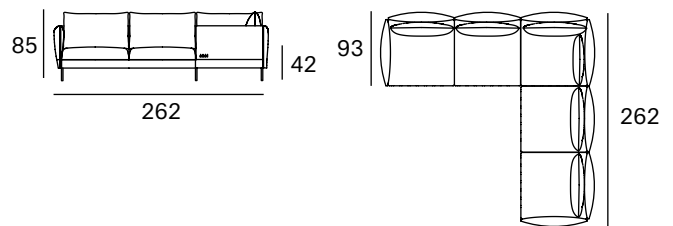
LEGS: Black lacquered metal F1.

Packaging

Measures box 1	95x95x70
Measures box 2	175x95x70
Measures box 3	175x95x70
Weight	133 kg
Volume	2,95 m ³
Boxes	3 boxes

The product is delivered assembled, ready to join with a single click.

Dimensions



ORIGIN 100% Made in Spain

PRODUCTION TIME 4 weeks

WARRANTY 5 years

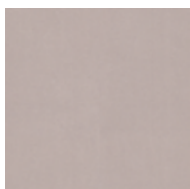
There is a five-year warranty against manufacturing defects (materials and workmanship). Wear and tear and damage to the product are not covered by this warranty. User claims under this warranty must be submitted to the distributor of the product.

Finishes

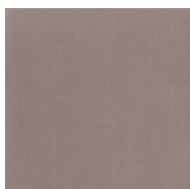
MADE TO ORDER

Upholstery Selection Blasco&Vila

SOL Collection



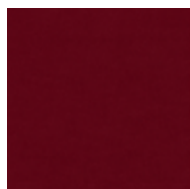
Blossom



Steel



Ocre



Scarlet

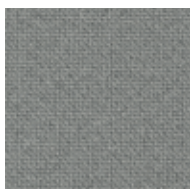


Blue

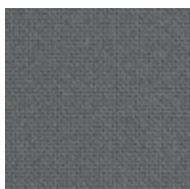


Turtle

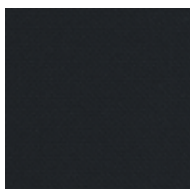
MAR Collection



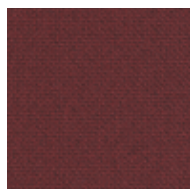
60112



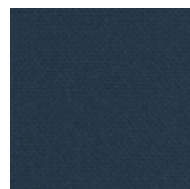
60110



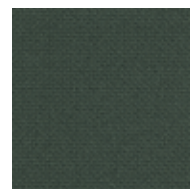
60111



64196



66170



68182

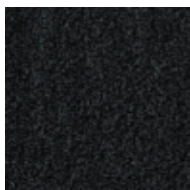
BIO Collection



Ivory



Steel

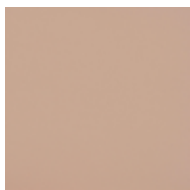


Onyx



Forest

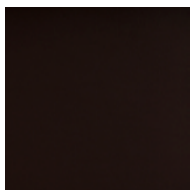
ECO Collection



Lotus



Cognac



Mocca



Schwarz

CUSTOM Endless customisation

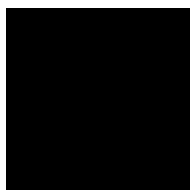
We can customise the product with any other upholstery:

Kvadrat
Gabriel
Camira
Sunbrella
Spradling
Crevin
etc.

Fabric needed to upholster the product:

27,00 metres

Metal



Black

Button



Black

Cushion 45x45



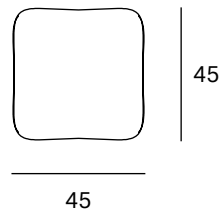


Ref: 454500

Materials

CUSHION: Fibre-filled cotton cover.

Dimensions



Packaging

Measures 50x50x10
Weight 2 kg
Volume 0,03 m³
Boxes 1 box

ORIGIN 100% Made in Spain

PRODUCTION TIME 4 weeks

WARRANTY 5 years

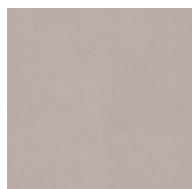
There is a five-year warranty against manufacturing defects (materials and workmanship). Wear and tear and damage to the product are not covered by this warranty. User claims under this warranty must be submitted to the distributor of the product.

Finishes

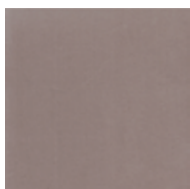
MADE TO ORDER

Upholstery Selection Blasco&Vila

SOL Collection



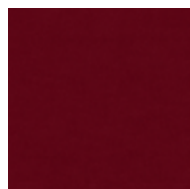
Blossom



Steel



Ocre



Scarlet



Blue

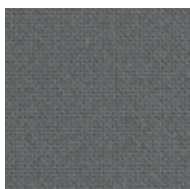


Turtle

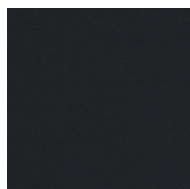
MAR Collection



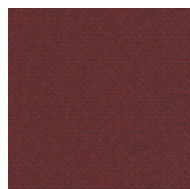
60112



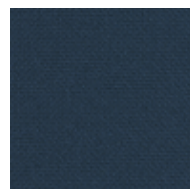
60110



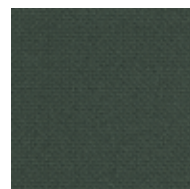
60111



64196



66170



68182

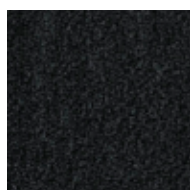
BIO Collection



Ivory



Steel

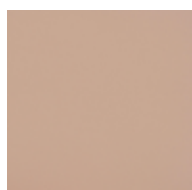


Onyx



Forest

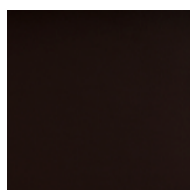
ECO Collection



Lotus



Cognac



Mocca



Schwarz

CUSTOM Endless customisation

We can customise the product with any other upholstery:

Kvadrat
Gabriel
Camira
Sunbrella
Spradling
Crevin
etc.

Fabric needed to upholster the product:

1,00 metre

Cushion 52x32



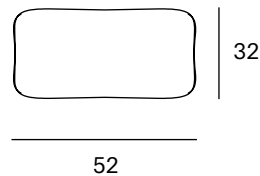


Ref: 523200

Materials

CUSHION: Fibre-filled cotton cover.

Dimensions



Packaging

Measures 55x35x10
Weight 2 kg
Volume 0,02 m³
Boxes 1 box

ORIGIN 100% Made in Spain

PRODUCTION TIME 4 weeks

WARRANTY 5 years

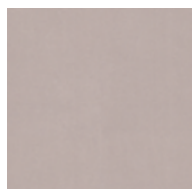
There is a five-year warranty against manufacturing defects (materials and workmanship). Wear and tear and damage to the product are not covered by this warranty. User claims under this warranty must be submitted to the distributor of the product.

Finishes

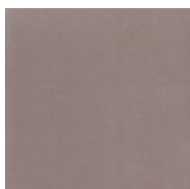
MADE TO ORDER

Upholstery Selection Blasco&Vila

SOL Collection



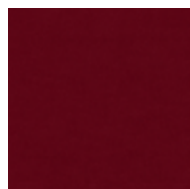
Blossom



Steel



Ocre



Scarlet

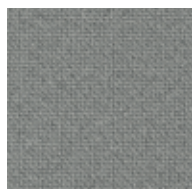


Blue

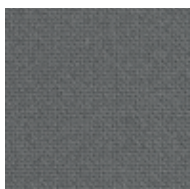


Turtle

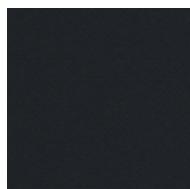
MAR Collection



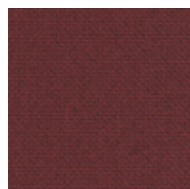
60112



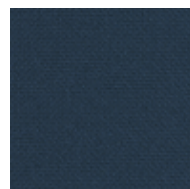
60110



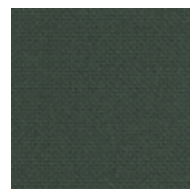
60111



64196



66170



68182

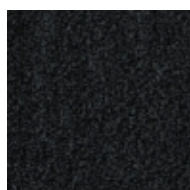
BIO Collection



Ivory



Steel

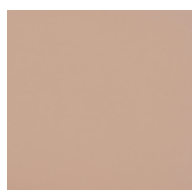


Onyx



Forest

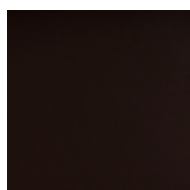
ECO Collection



Lotus



Cognac



Mocca



Schwarz

CUSTOM Endless customisation

We can customise the product with any other upholstery:

Kvadrat
Gabriel
Camira
Sunbrella
Spradling
Crevin
etc.

Fabric needed to upholster the product:

1,00 metre



HOME DEKOR

— fashion furniture —

www.home-dekor.com