



HOME DEKOR  
*fashion furniture*



BOWLER COLLECTION

[www.home-dekor.com](http://www.home-dekor.com)

# Chair

estudi{H}ac

2019

Inspired by Thomas Bowler, hatters who was commissioned to create hard hats to protect the heads of forest rangers. As an extrapolation of this concept, this seating collection has sought to synthesize the idea of a semi-spherical hat with a low cup and a rounded brim to create its formal appearance. A configuration of curvatures between the seat and the seat back confers an elegant aesthetic rendition. To highlight the forms, the upholstery has a striking visual accentuation of the fabric itself and it combines with a distinctive metallic ring portion that takes in the legs, thereby conferring unique character to the collection.

Creative studio specialized in "bespoke" projects of product design, interior architecture and the creation of ephemeral montages. Tailor, unique, timeless products and projects that amaze onlookers thanks to their initial visual impact and the story behind them. The basis of each project lies in the initial concept, which is where José Manuel Ferrero and his team come up with the story behind each project.





Ref: 400000

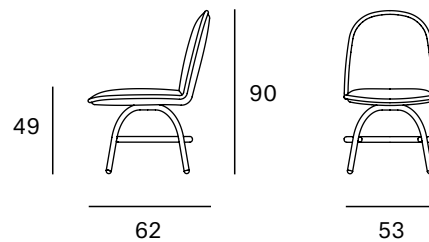
**Materials**

STRUCTURE: Curved beech wood board covered with polyurethane foam rubber.

SEAT: Polyurethane foam rubber density 32 kg.

BACK: Polyurethane foam rubber density 32 kg.

LEGS: Black lacquered metal F1.

**Dimensions****Packaging**

Measures	58x67x95	The product is delivered assembled.
Weight	13 kg	
Volume	0,37 m <sup>3</sup>	
Boxes	1 box	

**ORIGIN** 100% Made in Spain**PRODUCTION TIME** 4 weeks**WARRANTY** 5 years

There is a five-year warranty against manufacturing defects (materials and workmanship). Wear and tear and damage to the product are not covered by this warranty. User claims under this warranty must be submitted to the distributor of the product.

# Finishes

MADE TO ORDER

## Upholstery Selection Blasco&Vila

### SOL Collection



Blossom



Steel



Ocre



Scarlet



Blue

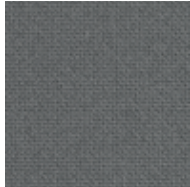


Turtle

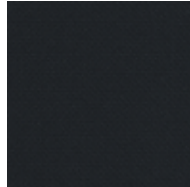
### MAR Collection



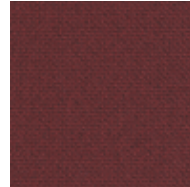
60112



60110



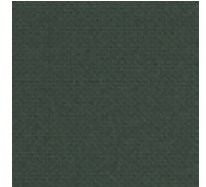
60111



64196



66170

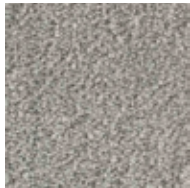


68182

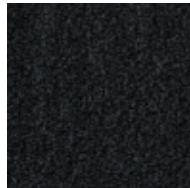
### BIO Collection



Ivory



Steel

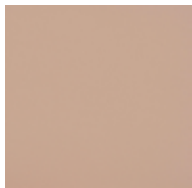


Onyx



Forest

### ECO Collection



Lotus



Cognac



Mocca



Schwarz

### CUSTOM Endless customisation

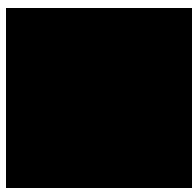
We can customise the product with any other upholstery:

Kvadrat  
Gabriel  
Camira  
Sunbrella  
Spradling  
Crevin  
*etc.*

Fabric needed to upholster the product:

1,50 metres

## Metal



Black

# Lounge chair

estudi{H}ac

2019

Inspired by Thomas Bowler, hatters who was commissioned to create hard hats to protect the heads of forest rangers. As an extrapolation of this concept, this seating collection has sought to synthesize the idea of a semi-spherical hat with a low cup and a rounded brim to create its formal appearance. A configuration of curvatures between the seat and the seat back confers an elegant aesthetic rendition. To highlight the forms, the upholstery has a striking visual accentuation of the fabric itself and it combines with a distinctive metallic ring portion that takes in the legs, thereby conferring unique character to the collection.

Creative studio specialized in "bespoke" projects of product design, interior architecture and the creation of ephemeral montages. Tailor, unique, timeless products and projects that amaze onlookers thanks to their initial visual impact and the story behind them. The basis of each project lies in the initial concept, which is where José Manuel Ferrero and his team come up with the story behind each project.





Ref: 400001

### Materials

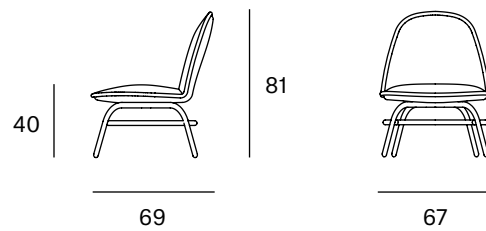
**STRUCTURE:** Curved beech wood board covered with polyurethane foam rubber.

**SEAT:** Polyurethane foam rubber density 32 kg.

**BACK:** Polyurethane foam rubber density 32 kg.

**LEGS:** Black lacquered metal F1.

### Dimensions



### Packaging

Measures	72x74x86	The product is delivered assembled.
Weight	17 kg	
Volume	0,45 m <sup>3</sup>	
Boxes	1 box	

**ORIGIN** 100% Made in Spain

**PRODUCTION TIME** 4 weeks

**WARRANTY** 5 years

There is a five-year warranty against manufacturing defects (materials and workmanship). Wear and tear and damage to the product are not covered by this warranty. User claims under this warranty must be submitted to the distributor of the product.

# Finishes

MADE TO ORDER

## Upholstery Selection Blasco&Vila

### SOL Collection



Blossom



Steel



Ocre



Scarlet



Blue



Turtle

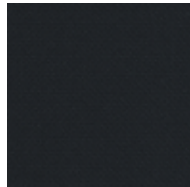
### MAR Collection



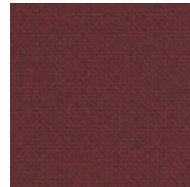
60112



60110



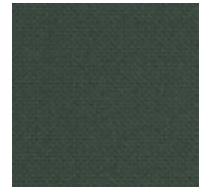
60111



64196



66170



68182

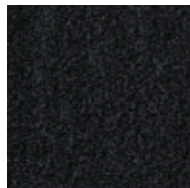
### BIO Collection



Ivory



Steel

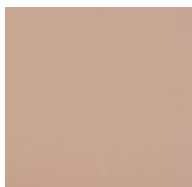


Onyx

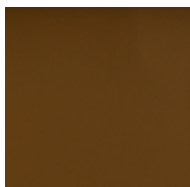


Forest

### ECO Collection



Lotus



Cognac



Mocca



Schwarz

### CUSTOM Endless customisation

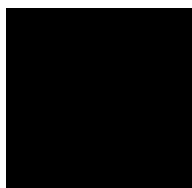
We can customise the product with any other upholstery:

Kvadrat  
Gabriel  
Camira  
Sunbrella  
Spradling  
Crevin  
*etc.*

Fabric needed to upholster the product:

2,00 metres

## Metal



Black

# Stool

estudi{H}ac

2019

Inspired by Thomas Bowler, hatters who was commissioned to create hard hats to protect the heads of forest rangers. As an extrapolation of this concept, this seating collection has sought to synthesize the idea of a semi-spherical hat with a low cup and a rounded brim to create its formal appearance. A configuration of curvatures between the seat and the seat back confers an elegant aesthetic rendition. To highlight the forms, the upholstery has a striking visual accentuation of the fabric itself and it combines with a distinctive metallic ring portion that takes in the legs, thereby conferring unique character to the collection.

Creative studio specialized in "bespoke" projects of product design, interior architecture and the creation of ephemeral montages. Tailor, unique, timeless products and projects that amaze onlookers thanks to their initial visual impact and the story behind them. The basis of each project lies in the initial concept, which is where José Manuel Ferrero and his team come up with the story behind each project.







Ref: 400002

---

**Materials**

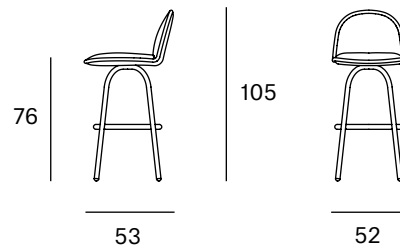
STRUCTURE: Curved beech wood board covered with polyurethane foam rubber.

SEAT: Polyurethane foam rubber density 32 kg.

BACK: Polyurethane foam rubber density 32 kg.

LEGS: Black lacquered metal F1.

---

**Dimensions**

---

**Packaging**

Measures	57x58x110	The product is delivered assembled.
Weight	14 kg	
Volume	0,36 m <sup>3</sup>	
Boxes	1 box	

---

**ORIGIN** 100% Made in Spain**PRODUCTION TIME** 4 weeks**WARRANTY** 5 years

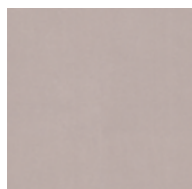
There is a five-year warranty against manufacturing defects (materials and workmanship). Wear and tear and damage to the product are not covered by this warranty. User claims under this warranty must be submitted to the distributor of the product.

# Finishes

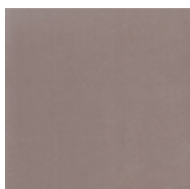
MADE TO ORDER

## Upholstery Selection Blasco&Vila

### SOL Collection



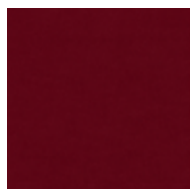
Blossom



Steel



Ocre



Scarlet

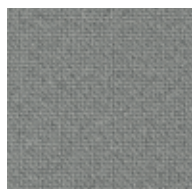


Blue

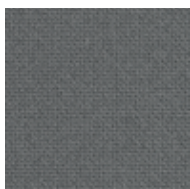


Turtle

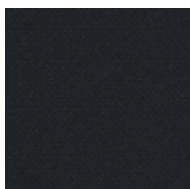
### MAR Collection



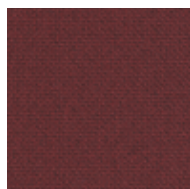
60112



60110



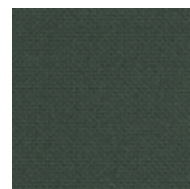
60111



64196



66170



68182

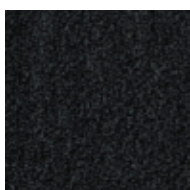
### BIO Collection



Ivory



Steel

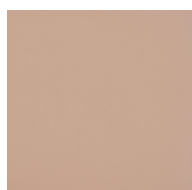


Onyx



Forest

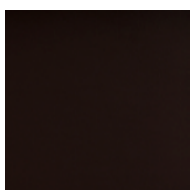
### ECO Collection



Lotus



Cognac



Mocca



Schwarz

### CUSTOM Endless customisation

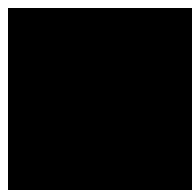
We can customise the product with any other upholstery:

Kvadrat  
Gabriel  
Camira  
Sunbrella  
Spradling  
Crevin  
*etc.*

Fabric needed to upholster the product:

1,50 metres

## Metal



Black



HOME DEKOR

— fashion furniture —

[www.home-dekor.com](http://www.home-dekor.com)